

## Product datasheet for **TA507282AM**

### **GGA2 Mouse Monoclonal Antibody (Biotin conjugated) [Clone ID: OTI1D2]**

#### **Product data:**

<b>Product Type:</b>	Primary Antibodies
<b>Clone Name:</b>	OTI1D2
<b>Applications:</b>	WB
<b>Recommended Dilution:</b>	WB 1:4000
<b>Reactivity:</b>	Human, Mouse, Rat
<b>Host:</b>	Mouse
<b>Isotype:</b>	IgG2b
<b>Clonality:</b>	Monoclonal
<b>Immunogen:</b>	Full length human recombinant protein of human GGA2(NP_055859) produced in HEK293T cell
<b>Formulation:</b>	PBS (pH 7.3) containing 1% BSA, 50% glycerol and 0.02% sodium azide.
<b>Concentration:</b>	0.5 mg/ml
<b>Purification:</b>	Purified from mouse ascites fluids or tissue culture supernatant by affinity chromatography (protein A/G)
<b>Conjugation:</b>	Biotin
<b>Storage:</b>	Store at -20°C as received.
<b>Stability:</b>	Stable for 12 months from date of receipt.
<b>Predicted Protein Size:</b>	67 kDa
<b>Gene Name:</b>	golgi associated, gamma adaptin ear containing, ARF binding protein 2
<b>Database Link:</b>	<a href="#">NP_055859</a> <a href="#">Entrez Gene 74105 Mouse</a> <a href="#">Entrez Gene 293455 Rat</a> <a href="#">Entrez Gene 23062 Human</a> <a href="#">Q9UJY4</a>



[View online »](#)

**Background:**

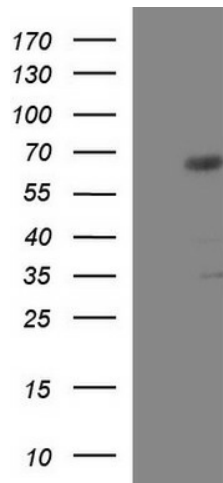
This gene encodes a member of the Golgi-localized, gamma adaptin ear-containing, ARF-binding (GGA) family. This family includes ubiquitous coat proteins that regulate the trafficking of proteins between the trans-Golgi network and the lysosome. These proteins share an amino-terminal VHS domain which mediates sorting of the mannose 6-phosphate receptors at the trans-Golgi network. They also contain a carboxy-terminal region with homology to the ear domain of gamma-adaptins. This family member may play a significant role in cargo molecules regulation and clathrin-coated vesicle assembly. [provided by RefSeq, Jul 2008]

**Synonyms:**

VEAR

**Protein Pathways:**

Lysosome

**Product images:**

HEK293T cells were transfected with the pCMV6-ENTRY control (Cat# [PS100001], Left lane) or pCMV6-ENTRY GGA2 (Cat# [RC200153], Right lane) cDNA for 48 hrs and lysed. Equivalent amounts of cell lysates (5 ug per lane) were separated by SDS-PAGE and immunoblotted with anti-GGA2 (Cat# [TA507282]). Positive lysates [LY414846] (100ug) and [LC414846] (20ug) can be purchased separately from OriGene.