

## Product datasheet for **TA507281S**

### **TXNDC5 Mouse Monoclonal Antibody [Clone ID: OTI2E6]**

#### **Product data:**

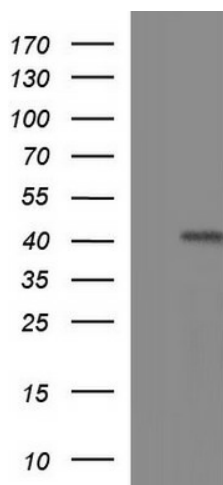
|                                |   |
|--------------------------------|---|
| <b>Product Type:</b>           | Primary Antibodies  |
| <b>Clone Name:</b>             | OTI2E6  |
| <b>Applications:</b>           | IHC, WB   |
| <b>Recommended Dilution:</b>   | WB 1:1000, IHC 1:150  |
| <b>Reactivity:</b>             | Human, Mouse, Rat   |
| <b>Host:</b>                   | Mouse   |
| <b>Isotype:</b>                | IgG1  |
| <b>Clonality:</b>              | Monoclonal  |
| <b>Immunogen:</b>              | Full length human recombinant protein of human TXNDC5(NP_071368) produced in HEK293T cell.  |
| <b>Formulation:</b>            | PBS (pH 7.3) containing 1% BSA, 50% glycerol and 0.02% sodium azide.  |
| <b>Concentration:</b>          | 1 mg/ml   |
| <b>Purification:</b>           | Purified from mouse ascites fluids or tissue culture supernatant by affinity chromatography (protein A/G)   |
| <b>Conjugation:</b>            | Unconjugated  |
| <b>Storage:</b>                | Store at -20°C as received.   |
| <b>Stability:</b>              | Stable for 12 months from date of receipt.  |
| <b>Predicted Protein Size:</b> | 43.5 kDa  |
| <b>Gene Name:</b>              | thioredoxin domain containing 5   |
| <b>Database Link:</b>          | <a href="#">NP_071368</a><br><a href="#">Entrez Gene 105245 Mouse</a> <a href="#">Entrez Gene 81567 Human</a><br><a href="#">Q8NBS9</a>   |
| <b>Background:</b>             | This gene encodes a protein-disulfide isomerase. Its expression is induced by hypoxia and its role may be to protect hypoxic cells from apoptosis. Alternative splicing results in multiple transcript variants. Read-through transcription also exists between this gene and the neighboring upstream MUTED (muted homolog) gene. [provided by RefSeq, Dec 2010] |
| <b>Synonyms:</b>               | ERP46, Hcc-2, UNQ364, EndoPDI, MGC3178; thioredoxin domain containing 5   |



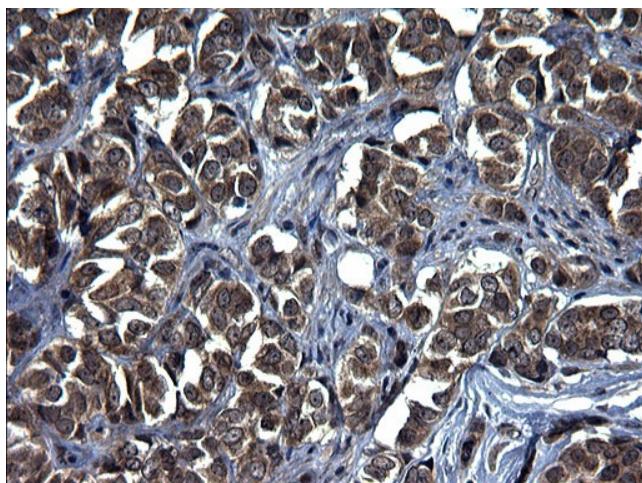
[View online »](#)

Protein Families: Druggable Genome

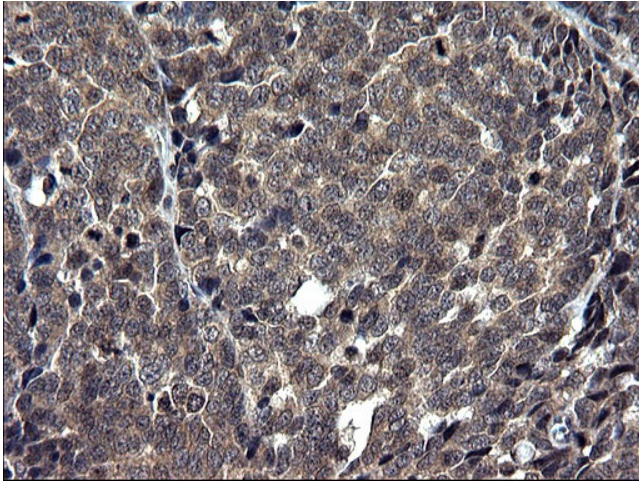
### Product images:



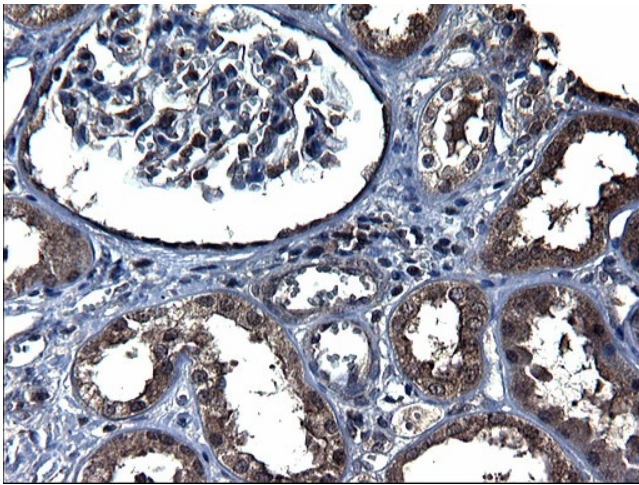
HEK293T cells were transfected with the pCMV6-ENTRY control (Cat# [PS100001], Left lane) or pCMV6-ENTRY TXNDC5 (Cat# [RC208568], Right lane) cDNA for 48 hrs and lysed. Equivalent amounts of cell lysates (5 ug per lane) were separated by SDS-PAGE and immunoblotted with anti-TXNDC5 (Cat# [TA507281]).



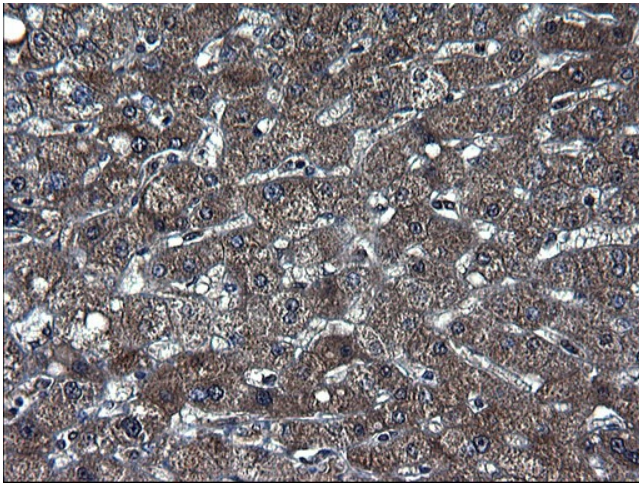
Immunohistochemical staining of paraffin-embedded Adenocarcinoma of Human breast tissue using anti-TXNDC5 mouse monoclonal antibody. (Heat-induced epitope retrieval by 1mM EDTA in 10mM Tris, pH8.5, 120°C for 3min, [TA507281])



Immunohistochemical staining of paraffin-embedded Adenocarcinoma of Human colon tissue using anti-TXNDC5 mouse monoclonal antibody. (Heat-induced epitope retrieval by 1mM EDTA in 10mM Tris, pH8.5, 120°C for 3min, [TA507281])

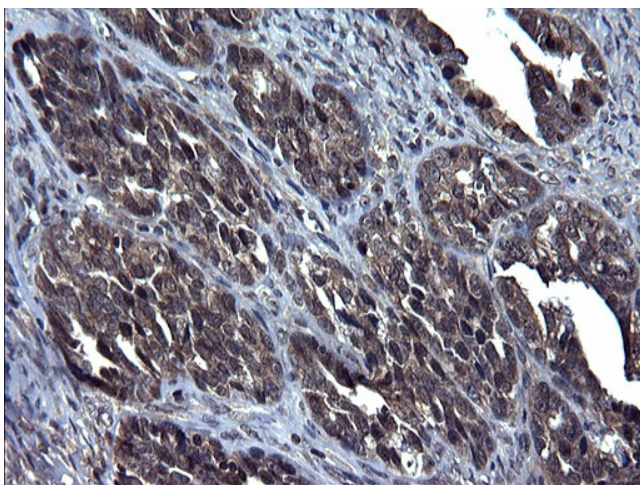


Immunohistochemical staining of paraffin-embedded Human Kidney tissue within the normal limits using anti-TXNDC5 mouse monoclonal antibody. (Heat-induced epitope retrieval by 1mM EDTA in 10mM Tris, pH8.5, 120°C for 3min, [TA507281])

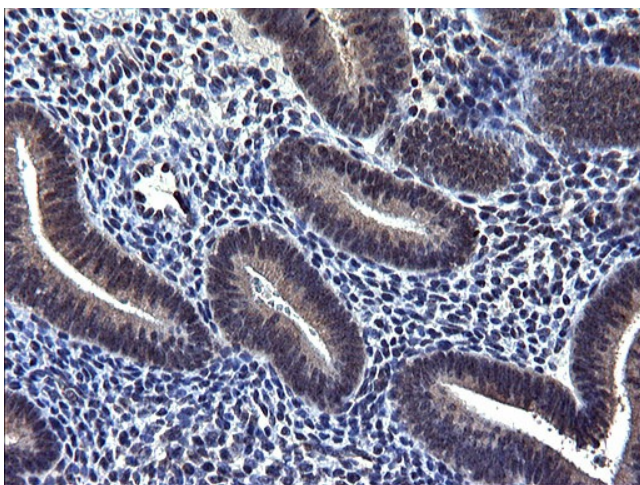


Immunohistochemical staining of paraffin-embedded Human liver tissue within the normal limits using anti-TXNDC5 mouse monoclonal antibody. (Heat-induced epitope retrieval by 1mM EDTA in 10mM Tris, pH8.5, 120°C for 3min, [TA507281])

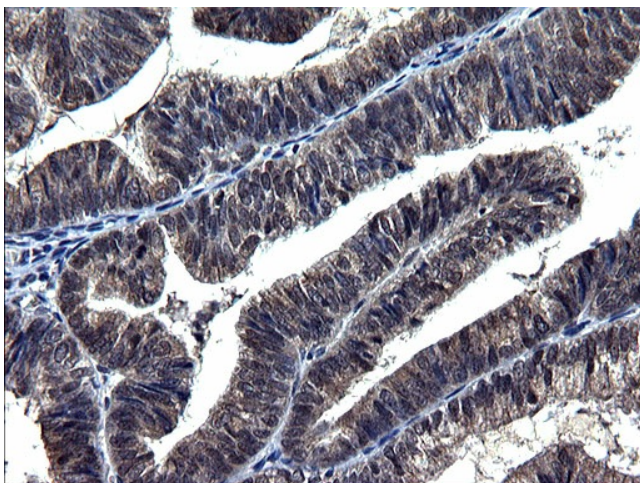




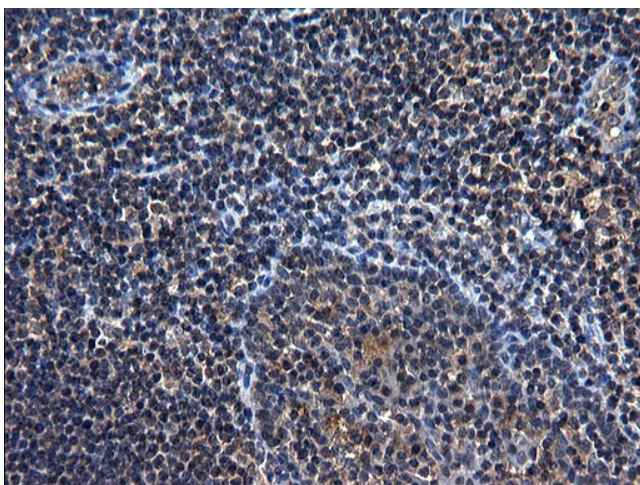
Immunohistochemical staining of paraffin-embedded Adenocarcinoma of Human ovary tissue using anti-TXNDC5 mouse monoclonal antibody. (Heat-induced epitope retrieval by 1mM EDTA in 10mM Tris, pH8.5, 120°C for 3min, [TA507281])



Immunohistochemical staining of paraffin-embedded Human endometrium tissue within the normal limits using anti-TXNDC5 mouse monoclonal antibody. (Heat-induced epitope retrieval by 1mM EDTA in 10mM Tris, pH8.5, 120°C for 3min, [TA507281])



Immunohistochemical staining of paraffin-embedded Adenocarcinoma of Human endometrium tissue using anti-TXNDC5 mouse monoclonal antibody. (Heat-induced epitope retrieval by 1mM EDTA in 10mM Tris, pH8.5, 120°C for 3min, [TA507281])



Immunohistochemical staining of paraffin-embedded Human lymph node tissue within the normal limits using anti-TXNDC5 mouse monoclonal antibody. (Heat-induced epitope retrieval by 1mM EDTA in 10mM Tris, pH8.5, 120°C for 3min, [TA507281])