

## Product datasheet for **TA507281**

### **TXNDC5 Mouse Monoclonal Antibody [Clone ID: OTI2E6]**

#### **Product data:**

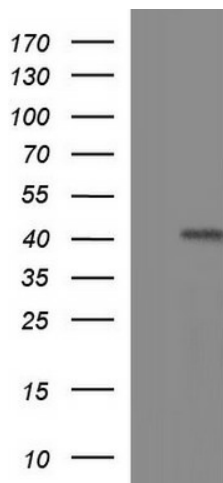
<b>Product Type:</b>	Primary Antibodies
<b>Clone Name:</b>	OTI2E6
<b>Applications:</b>	IHC, WB
<b>Recommended Dilution:</b>	WB 1:1000, IHC 1:150
<b>Reactivity:</b>	Human, Mouse, Rat
<b>Host:</b>	Mouse
<b>Isotype:</b>	IgG1
<b>Clonality:</b>	Monoclonal
<b>Immunogen:</b>	Full length human recombinant protein of human TXNDC5(NP_071368) produced in HEK293T cell.
<b>Formulation:</b>	PBS (pH 7.3) containing 1% BSA, 50% glycerol and 0.02% sodium azide.
<b>Concentration:</b>	1 mg/ml
<b>Purification:</b>	Purified from mouse ascites fluids or tissue culture supernatant by affinity chromatography (protein A/G)
<b>Conjugation:</b>	Unconjugated
<b>Storage:</b>	Store at -20°C as received.
<b>Stability:</b>	Stable for 12 months from date of receipt.
<b>Predicted Protein Size:</b>	43.5 kDa
<b>Gene Name:</b>	thioredoxin domain containing 5
<b>Database Link:</b>	<a href="#">NP_071368</a> <a href="#">Entrez Gene 105245 Mouse</a> <a href="#">Entrez Gene 81567 Human</a> <a href="#">Q8NBS9</a>
<b>Background:</b>	This gene encodes a protein-disulfide isomerase. Its expression is induced by hypoxia and its role may be to protect hypoxic cells from apoptosis. Alternative splicing results in multiple transcript variants. Read-through transcription also exists between this gene and the neighboring upstream MUTED (muted homolog) gene. [provided by RefSeq, Dec 2010]
<b>Synonyms:</b>	ERP46, Hcc-2, UNQ364, EndoPDI, MGC3178; thioredoxin domain containing 5



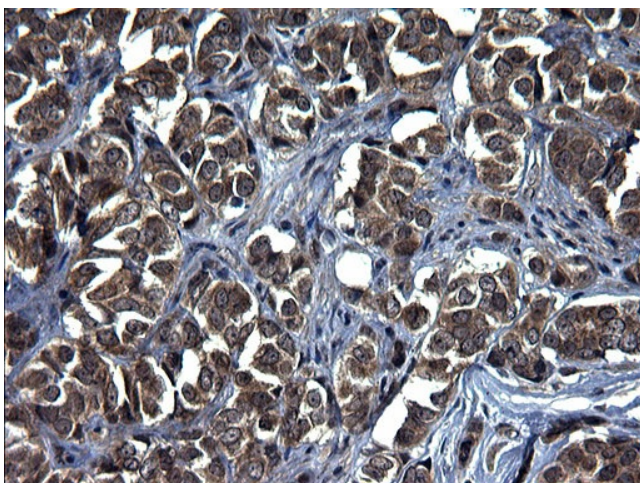
[View online »](#)

Protein Families: Druggable Genome

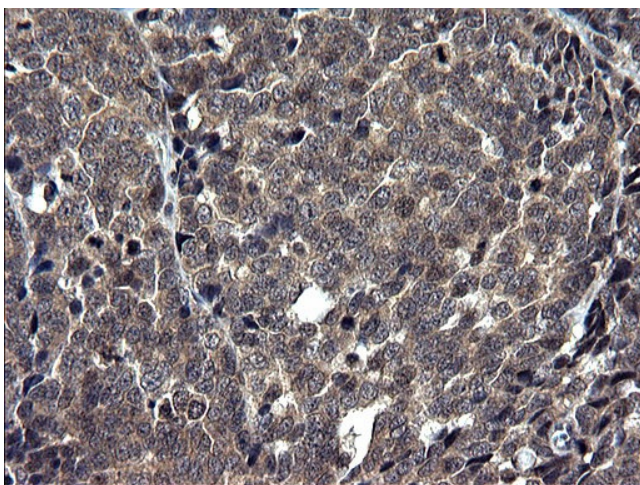
### Product images:



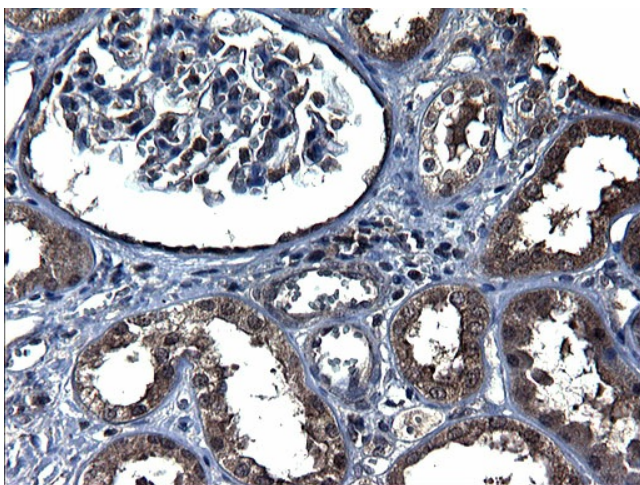
HEK293T cells were transfected with the pCMV6-ENTRY control (Cat# [PS100001], Left lane) or pCMV6-ENTRY TXNDC5 (Cat# [RC208568], Right lane) cDNA for 48 hrs and lysed. Equivalent amounts of cell lysates (5 ug per lane) were separated by SDS-PAGE and immunoblotted with anti-TXNDC5 (Cat# TA507281).



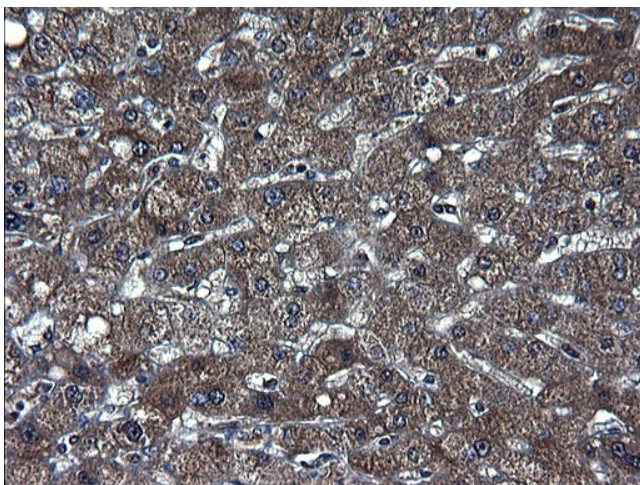
Immunohistochemical staining of paraffin-embedded Adenocarcinoma of Human breast tissue using anti-TXNDC5 mouse monoclonal antibody. (Heat-induced epitope retrieval by 1mM EDTA in 10mM Tris, pH8.5, 120°C for 3min, TA507281)



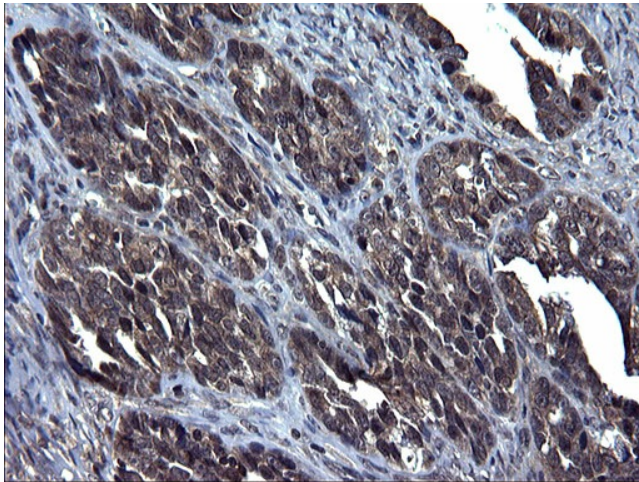
Immunohistochemical staining of paraffin-embedded Adenocarcinoma of Human colon tissue using anti-TXNDC5 mouse monoclonal antibody. (Heat-induced epitope retrieval by 1mM EDTA in 10mM Tris, pH8.5, 120°C for 3min, TA507281)



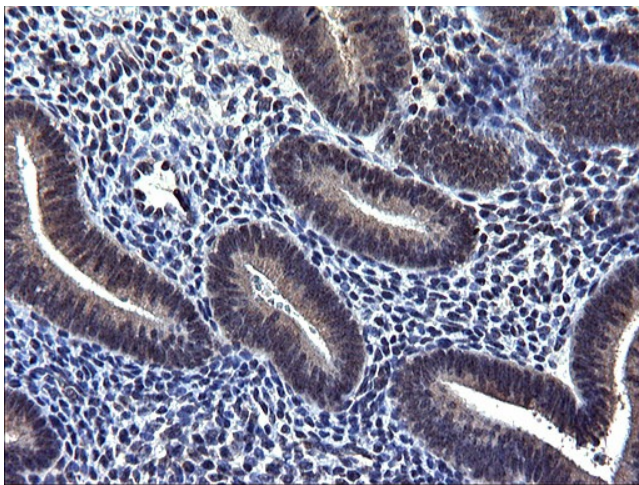
Immunohistochemical staining of paraffin-embedded Human Kidney tissue within the normal limits using anti-TXNDC5 mouse monoclonal antibody. (Heat-induced epitope retrieval by 1mM EDTA in 10mM Tris, pH8.5, 120°C for 3min, TA507281)



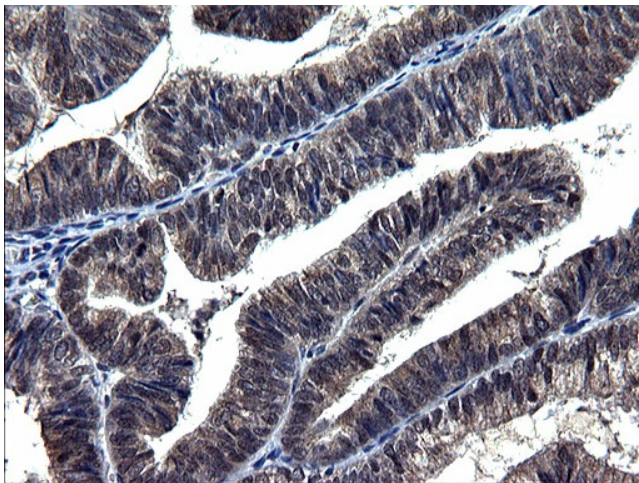
Immunohistochemical staining of paraffin-embedded Human liver tissue within the normal limits using anti-TXNDC5 mouse monoclonal antibody. (Heat-induced epitope retrieval by 1mM EDTA in 10mM Tris, pH8.5, 120°C for 3min, TA507281)



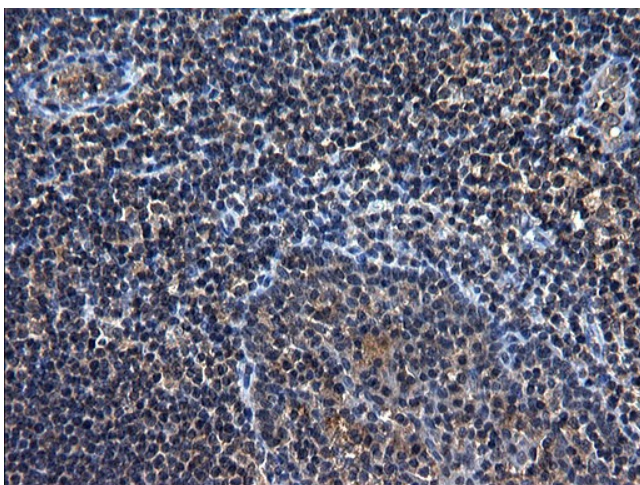
Immunohistochemical staining of paraffin-embedded Adenocarcinoma of Human ovary tissue using anti-TXNDC5 mouse monoclonal antibody. (Heat-induced epitope retrieval by 1mM EDTA in 10mM Tris, pH8.5, 120°C for 3min, TA507281)



Immunohistochemical staining of paraffin-embedded Human endometrium tissue within the normal limits using anti-TXNDC5 mouse monoclonal antibody. (Heat-induced epitope retrieval by 1mM EDTA in 10mM Tris, pH8.5, 120°C for 3min, TA507281)



Immunohistochemical staining of paraffin-embedded Adenocarcinoma of Human endometrium tissue using anti-TXNDC5 mouse monoclonal antibody. (Heat-induced epitope retrieval by 1mM EDTA in 10mM Tris, pH8.5, 120°C for 3min, TA507281)



Immunohistochemical staining of paraffin-embedded Human lymph node tissue within the normal limits using anti-TXNDC5 mouse monoclonal antibody. (Heat-induced epitope retrieval by 1mM EDTA in 10mM Tris, pH8.5, 120°C for 3min, TA507281)