

Product datasheet for **TA507274BM**

HSCB Mouse Monoclonal Antibody (HRP conjugated) [Clone ID: OTI3E1]

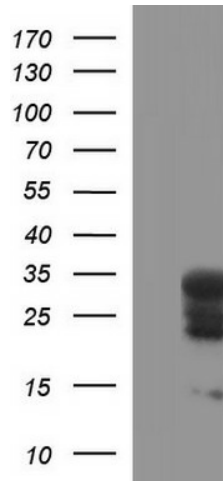
Product data:

Product Type:	Primary Antibodies
Clone Name:	OTI3E1
Applications:	IHC, WB
Recommended Dilution:	WB 1:400~4000, IHC 1:150
Reactivity:	Human, Dog, Rat, Monkey, Mouse
Host:	Mouse
Isotype:	IgG1
Clonality:	Monoclonal
Immunogen:	Full length human recombinant protein of human HSCB(NP_741999) produced in HEK293T cell
Formulation:	PBS (pH 7.3) containing 1% BSA, 50% glycerol.
Concentration:	0.5 mg/ml
Purification:	Purified from mouse ascites fluids or tissue culture supernatant by affinity chromatography (protein A/G)
Conjugation:	HRP
Storage:	Store at -20°C as received.
Stability:	Stable for 12 months from date of receipt.
Predicted Protein Size:	27.2 kDa
Gene Name:	HscB mitochondrial iron-sulfur cluster cochaperone
Database Link:	NP_741999 Entrez Gene 100900 Mouse Entrez Gene 360826 Rat Entrez Gene 477531 Dog Entrez Gene 713734 Monkey Entrez Gene 150274 Human Q8IWL3
Synonyms:	DNAJC20; HSC20; JAC1

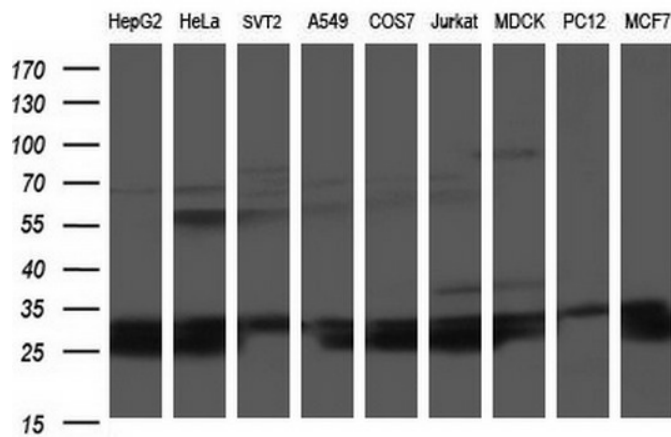


[View online »](#)

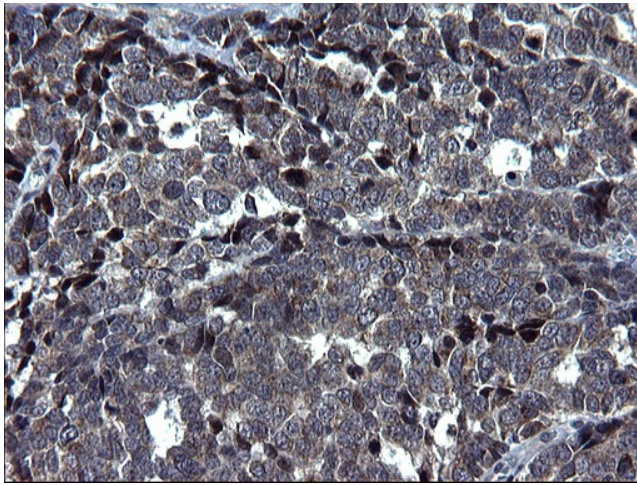
Product images:



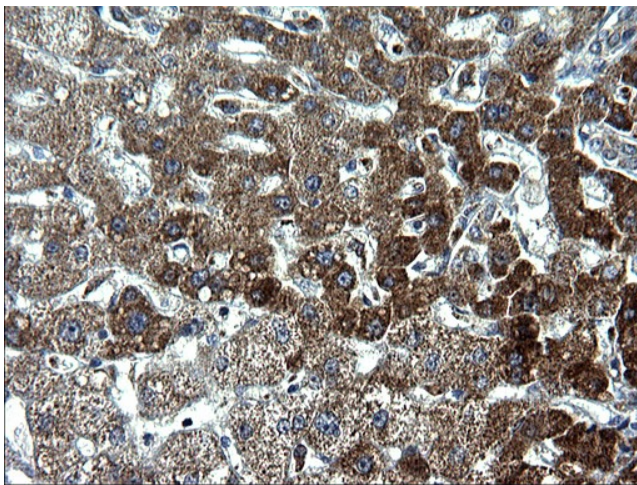
HEK293T cells were transfected with the pCMV6-ENTRY control (Cat# [PS100001], Left lane) or pCMV6-ENTRY HSCB (Cat# [RC200843], Right lane) cDNA for 48 hrs and lysed. Equivalent amounts of cell lysates (5 ug per lane) were separated by SDS-PAGE and immunoblotted with anti-HSCB (Cat# [TA507274]). Positive lysates [LY406803] (100ug) and [LC406803] (20ug) can be purchased separately from OriGene.



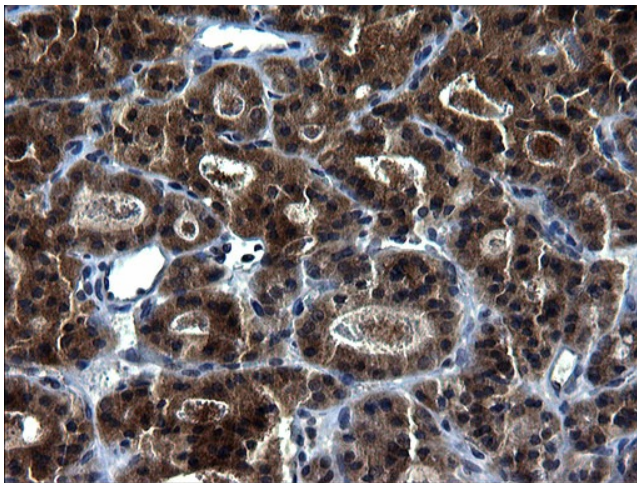
Western blot analysis of extracts (35ug) from 9 different cell lines by using anti-HSCB monoclonal antibody (HepG2: human; HeLa: human; SVT2: mouse; A549: human; COS7: monkey; Jurkat: human; MDCK: canine; PC12: rat; MCF7: human).



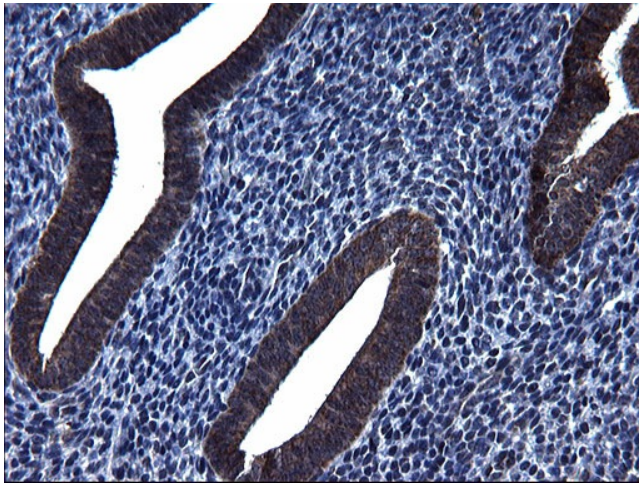
Immunohistochemical staining of paraffin-embedded Adenocarcinoma of Human colon tissue using anti-HSCB mouse monoclonal antibody. (Heat-induced epitope retrieval by 1mM EDTA in 10mM Tris, pH8.5, 120°C for 3min, [TA507274])



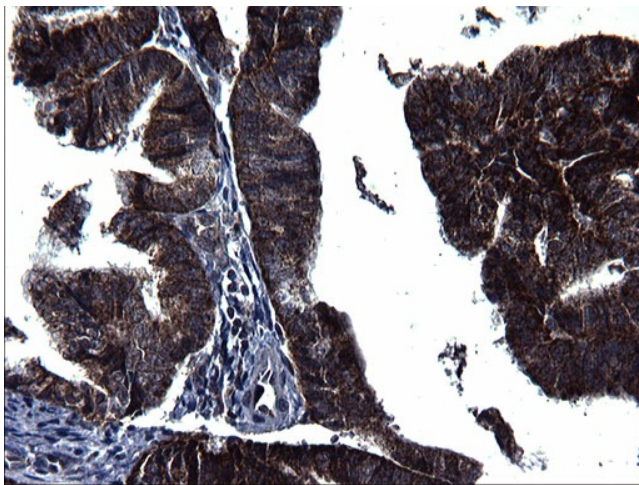
Immunohistochemical staining of paraffin-embedded Human liver tissue within the normal limits using anti-HSCB mouse monoclonal antibody. (Heat-induced epitope retrieval by 1mM EDTA in 10mM Tris, pH8.5, 120°C for 3min, [TA507274])



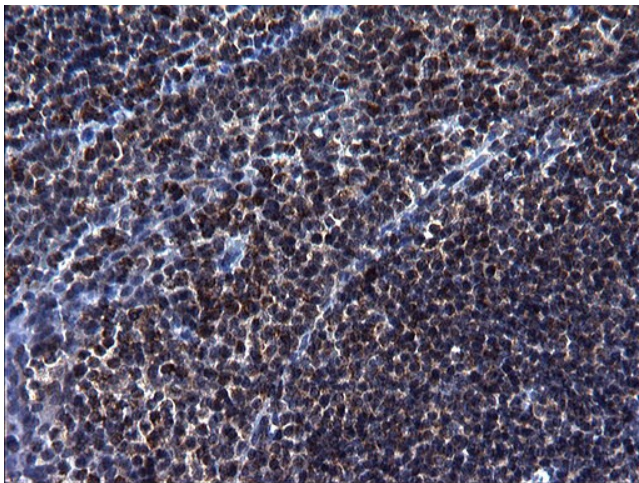
Immunohistochemical staining of paraffin-embedded Carcinoma of Human thyroid tissue using anti-HSCB mouse monoclonal antibody. (Heat-induced epitope retrieval by 1mM EDTA in 10mM Tris, pH8.5, 120°C for 3min, [TA507274])



Immunohistochemical staining of paraffin-embedded Human endometrium tissue within the normal limits using anti-HSCB mouse monoclonal antibody. (Heat-induced epitope retrieval by 1mM EDTA in 10mM Tris, pH8.5, 120°C for 3min, [TA507274])



Immunohistochemical staining of paraffin-embedded Adenocarcinoma of Human endometrium tissue using anti-HSCB mouse monoclonal antibody. (Heat-induced epitope retrieval by 1mM EDTA in 10mM Tris, pH8.5, 120°C for 3min, [TA507274])



Immunohistochemical staining of paraffin-embedded Human lymph node tissue within the normal limits using anti-HSCB mouse monoclonal antibody. (Heat-induced epitope retrieval by 1mM EDTA in 10mM Tris, pH8.5, 120°C for 3min, [TA507274])