

Product datasheet for **TA507273M**

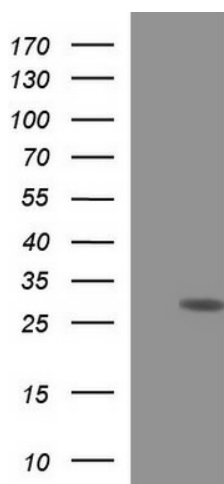
HSCB Mouse Monoclonal Antibody [Clone ID: OTI2A7]

Product data:

Product Type:	Primary Antibodies
Clone Name:	OTI2A7
Applications:	WB
Recommended Dilution:	WB 1:400~4000
Reactivity:	Human
Host:	Mouse
Isotype:	IgG1
Clonality:	Monoclonal
Immunogen:	Full length human recombinant protein of human HSCB(NP_741999) produced in HEK293T cell
Formulation:	PBS (pH 7.3) containing 1% BSA, 50% glycerol and 0.02% sodium azide.
Concentration:	1 mg/ml
Purification:	Purified from mouse ascites fluids or tissue culture supernatant by affinity chromatography (protein A/G)
Conjugation:	Unconjugated
Storage:	Store at -20°C as received.
Stability:	Stable for 12 months from date of receipt.
Predicted Protein Size:	27.2 kDa
Gene Name:	HscB mitochondrial iron-sulfur cluster cochaperone
Database Link:	NP_741999 Entrez Gene 150274 Human Q8IWL3
Synonyms:	DNAJC20; HSC20; JAC1

[View online »](#)

Product images:



HEK293T cells were transfected with the pCMV6-ENTRY control (Left lane) or pCMV6-ENTRY HSCB ([RC200843], Right lane) cDNA for 48 hrs and lysed. Equivalent amounts of cell lysates (5 ug per lane) were separated by SDS-PAGE and immunoblotted with anti-HSCB. Positive lysates [LY406803] (100ug) and [LC406803] (20ug) can be purchased separately from OriGene.