

Product datasheet for **TA507251M**

IRF5 Mouse Monoclonal Antibody [Clone ID: OTI1B8]

Product data:

Product Type:	Primary Antibodies
Clone Name:	OTI1B8
Applications:	WB
Recommended Dilution:	WB 1:4000
Reactivity:	Human, Mouse, Rat
Host:	Mouse
Isotype:	IgG1
Clonality:	Monoclonal
Immunogen:	Full length human recombinant protein of human IRF5(NP_116032) produced in HEK293T cell.
Formulation:	PBS (pH 7.3) containing 1% BSA, 50% glycerol and 0.02% sodium azide.
Concentration:	1 mg/ml
Purification:	Purified from mouse ascites fluids or tissue culture supernatant by affinity chromatography (protein A/G)
Conjugation:	Unconjugated
Storage:	Store at -20°C as received.
Stability:	Stable for 12 months from date of receipt.
Predicted Protein Size:	55.9 kDa
Gene Name:	interferon regulatory factor 5
Database Link:	NP_116032 Entrez Gene 27056 Mouse Entrez Gene 296953 Rat Entrez Gene 3663 Human Q13568

[View online »](#)

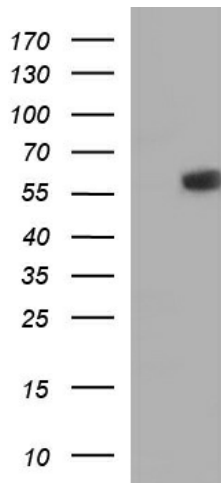
Background: This gene encodes a member of the interferon regulatory factor (IRF) family, a group of transcription factors with diverse roles, including virus-mediated activation of interferon, and modulation of cell growth, differentiation, apoptosis, and immune system activity. Members of the IRF family are characterized by a conserved N-terminal DNA-binding domain containing tryptophan (W) repeats. Multiple transcript variants encoding different isoforms have been found for this gene, and a 30-nt indel polymorphism (SNP rs60344245) can result in loss of a 10-aa segment. [provided by RefSeq, Mar 2010]

Synonyms: SLEB10

Protein Families: Transcription Factors

Protein Pathways: Toll-like receptor signaling pathway

Product images:



HEK293T cells were transfected with the pCMV6-ENTRY control (Left lane) or pCMV6-ENTRY IRF5 ([RC200458], Right lane) cDNA for 48 hrs and lysed. Equivalent amounts of cell lysates (5 ug per lane) were separated by SDS-PAGE and immunoblotted with anti-IRF5. Positive lysates [LY403185] (100ug) and [LC403185] (20ug) can be purchased separately from OriGene.