

## Product datasheet for **TA507250M**

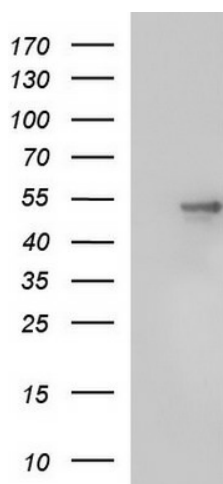
### SCRN1 Mouse Monoclonal Antibody [Clone ID: OT1E4]

#### Product data:

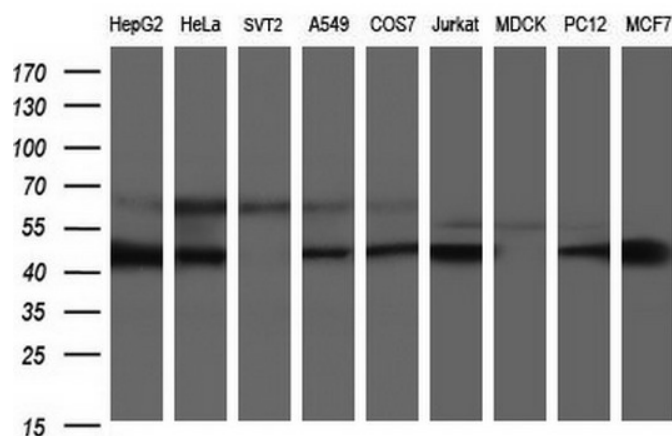
Product Type:	Primary Antibodies
Clone Name:	OT1E4
Applications:	IHC, WB
Recommended Dilution:	WB 1:400~4000, IHC 1:150
Reactivity:	Human, Rat, Monkey, Mouse
Host:	Mouse
Isotype:	IgG1
Clonality:	Monoclonal
Immunogen:	Full length human recombinant protein of human SCRN1(NP_055581) produced in HEK293T cell.
Formulation:	PBS (pH 7.3) containing 1% BSA, 50% glycerol and 0.02% sodium azide.
Concentration:	1 mg/ml
Purification:	Purified from mouse ascites fluids or tissue culture supernatant by affinity chromatography (protein A/G)
Conjugation:	Unconjugated
Storage:	Store at -20°C as received.
Stability:	Stable for 12 months from date of receipt.
Predicted Protein Size:	46.2 kDa
Gene Name:	secernin 1
Database Link:	<a href="#">NP_055581</a> <a href="#">Entrez Gene 69938 Mouse</a> <a href="#">Entrez Gene 502776 Rat</a> <a href="#">Entrez Gene 696370 Monkey</a> <a href="#">Entrez Gene 9805 Human</a> <a href="#">Q12765</a>
Background:	This gene likely encodes a member of the secernin family of proteins. A similar protein in rat functions in regulation of exocytosis in mast cells. Alternatively spliced transcript variants have been described. [provided by RefSeq, Mar 2009]
Synonyms:	SES1


[View online »](#)

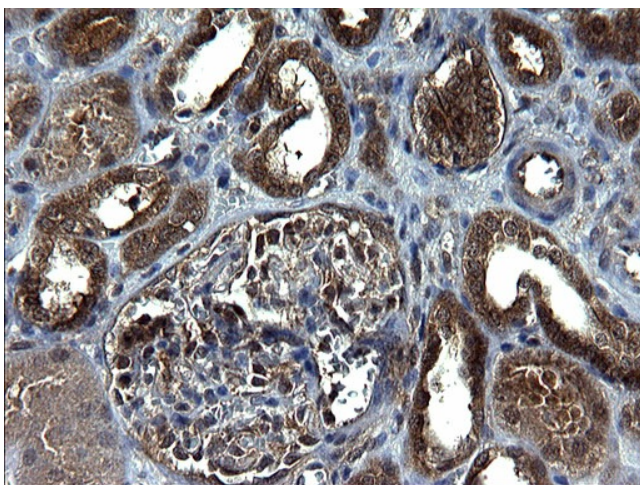
## Product images:



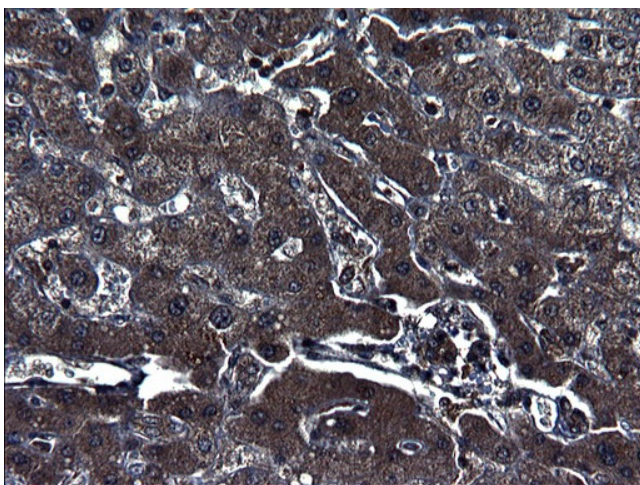
HEK293T cells were transfected with the pCMV6-ENTRY control (Left lane) or pCMV6-ENTRY SCR N1 ([RC206268], Right lane) cDNA for 48 hrs and lysed. Equivalent amounts of cell lysates (5 ug per lane) were separated by SDS-PAGE and immunoblotted with anti-SCR N1. Positive lysates [LY414994] (100ug) and [LC414994] (20ug) can be purchased separately from OriGene.



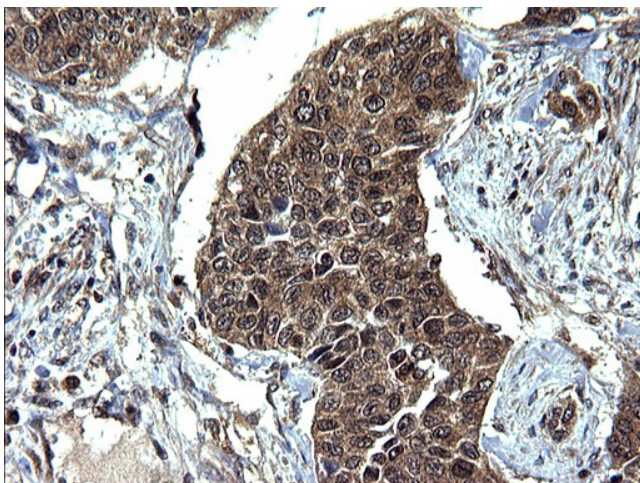
Western blot analysis of extracts (35ug) from 9 different cell lines by using anti-SCR N1 monoclonal antibody (HepG2: human; HeLa: human; SVT2: mouse; A549: human; COS7: monkey; Jurkat: human; MDCK: canine; PC12: rat; MCF7: human).



Immunohistochemical staining of paraffin-embedded Human Kidney tissue within the normal limits using anti-SCRN1 mouse monoclonal antibody. Heat-induced epitope retrieval by EDTA solution buffer pH 8.0 at 120°C for 3 min.

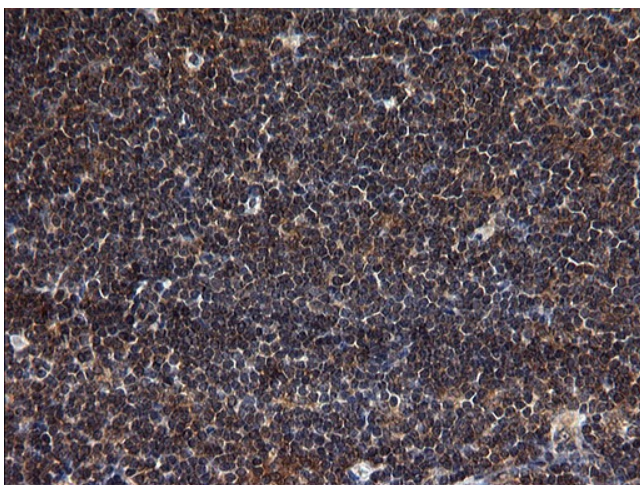


Immunohistochemical staining of paraffin-embedded Human liver tissue within the normal limits using anti-SCRN1 mouse monoclonal antibody. Heat-induced epitope retrieval by EDTA solution buffer pH 8.0 at 120°C for 3 min.

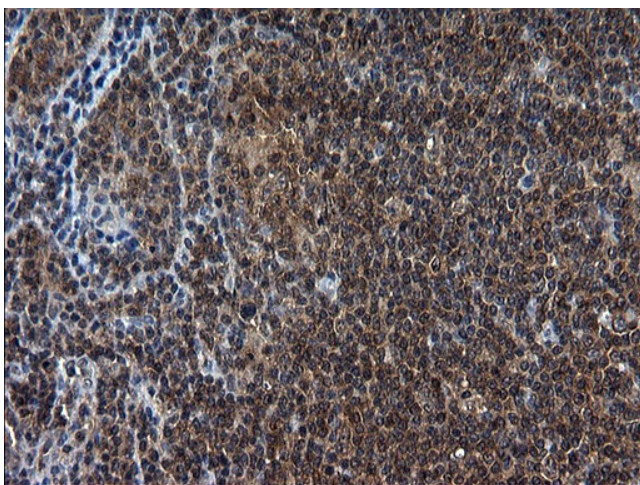


Immunohistochemical staining of paraffin-embedded Carcinoma of Human bladder tissue using anti-SCRN1 mouse monoclonal antibody. Heat-induced epitope retrieval by EDTA solution buffer pH 8.0 at 120°C for 3 min.





Immunohistochemical staining of paraffin-embedded Human lymph node tissue within the normal limits using anti-SCRN1 mouse monoclonal antibody. Heat-induced epitope retrieval by EDTA solution buffer pH 8.0 at 120°C for 3 min.



Immunohistochemical staining of paraffin-embedded Human lymphoma tissue using anti-SCRN1 mouse monoclonal antibody. Heat-induced epitope retrieval by EDTA solution buffer pH 8.0 at 120°C for 3 min.