

## Product datasheet for **TA507230S**

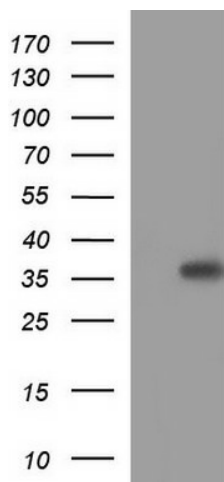
### **HORMAD2 Mouse Monoclonal Antibody [Clone ID: OTI2E2]**

#### **Product data:**

Product Type:	Primary Antibodies
Clone Name:	OTI2E2
Applications:	WB
Recommended Dilution:	WB 1:4000
Reactivity:	Human
Host:	Mouse
Isotype:	IgG1
Clonality:	Monoclonal
Immunogen:	Full length human recombinant protein of human HORMAD2(NP_689723) produced in HEK293T cell.
Formulation:	PBS (pH 7.3) containing 1% BSA, 50% glycerol and 0.02% sodium azide.
Concentration:	1 mg/ml
Purification:	Purified from mouse ascites fluids or tissue culture supernatant by affinity chromatography (protein A/G)
Conjugation:	Unconjugated
Storage:	Store at -20°C as received.
Stability:	Stable for 12 months from date of receipt.
Predicted Protein Size:	35.1 kDa
Gene Name:	HORMA domain containing 2
Database Link:	<a href="#">NP_689723</a> <a href="#">Entrez Gene 150280 Human</a> <a href="#">Q8N7B1</a>
Synonyms:	CT46.2



[View online »](#)

**Product images:**

HEK293T cells were transfected with the pCMV6-ENTRY control (Left lane) or pCMV6-ENTRY HORMAD2 ([RC205453], Right lane) cDNA for 48 hrs and lysed. Equivalent amounts of cell lysates (5 ug per lane) were separated by SDS-PAGE and immunoblotted with anti-HORMAD2. Positive lysates [LY407512] (100ug) and [LC407512] (20ug) can be purchased separately from OriGene.