

Product datasheet for **TA507219**

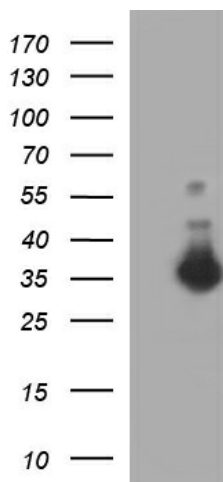
FNDC8 Mouse Monoclonal Antibody [Clone ID: OT11C10]

Product data:

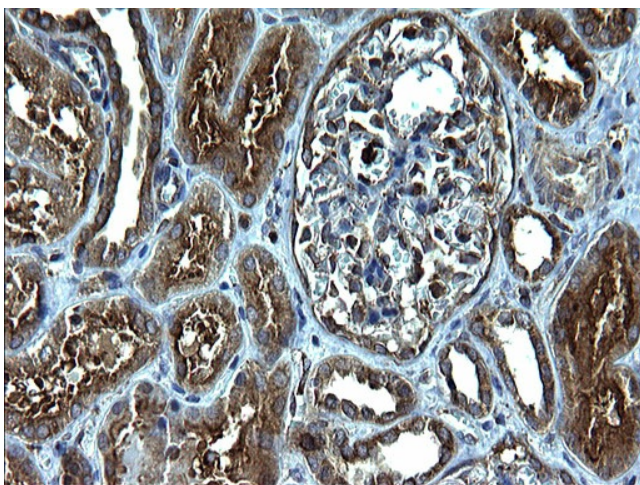
Product Type:	Primary Antibodies
Clone Name:	OT11C10
Applications:	IHC, WB
Recommended Dilution:	WB 1:4000, IHC 1:150
Reactivity:	Human
Host:	Mouse
Isotype:	IgG1
Clonality:	Monoclonal
Immunogen:	Full length human recombinant protein of human FNDC8(NP_060029) produced in HEK293T cell.
Formulation:	PBS (pH 7.3) containing 1% BSA, 50% glycerol and 0.02% sodium azide.
Concentration:	1 mg/ml
Purification:	Purified from mouse ascites fluids or tissue culture supernatant by affinity chromatography (protein A/G)
Conjugation:	Unconjugated
Storage:	Store at -20°C as received.
Stability:	Stable for 12 months from date of receipt.
Predicted Protein Size:	35.7 kDa
Gene Name:	fibronectin type III domain containing 8
Database Link:	NP_060029 Entrez Gene 54752 Human Q8TC99
Synonyms:	DKFZp434H2215



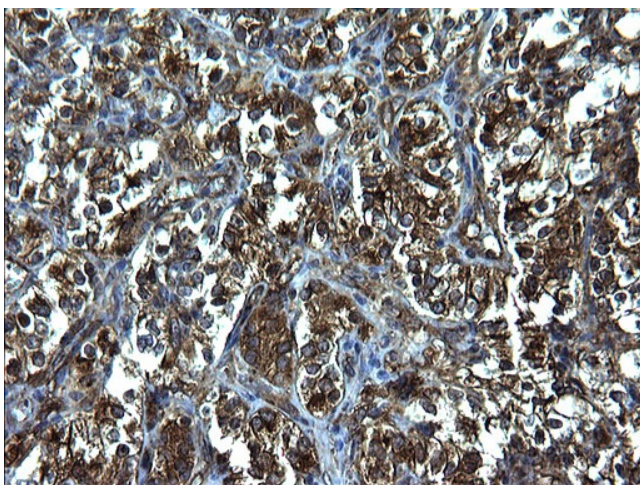
[View online »](#)

Product images:

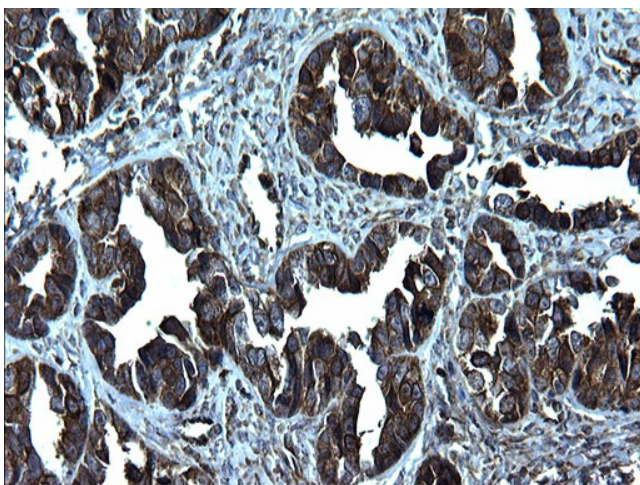
HEK293T cells were transfected with the pCMV6-ENTRY control (Cat# [PS100001], Left lane) or pCMV6-ENTRY FNDC8 (Cat# [RC205252], Right lane) cDNA for 48 hrs and lysed. Equivalent amounts of cell lysates (5 ug per lane) were separated by SDS-PAGE and immunoblotted with anti-FNDC8 (Cat# TA507219). Positive lysates [LY413703] (100ug) and [LC413703] (20ug) can be purchased separately from OriGene.



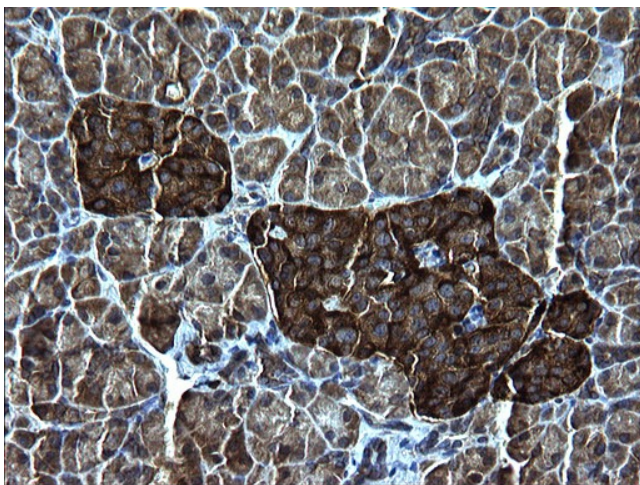
Immunohistochemical staining of paraffin-embedded Human Kidney tissue within the normal limits using anti-FNDC8 mouse monoclonal antibody. (Heat-induced epitope retrieval by 1mM EDTA in 10mM Tris, pH8.5, 120°C for 3min, TA507219)



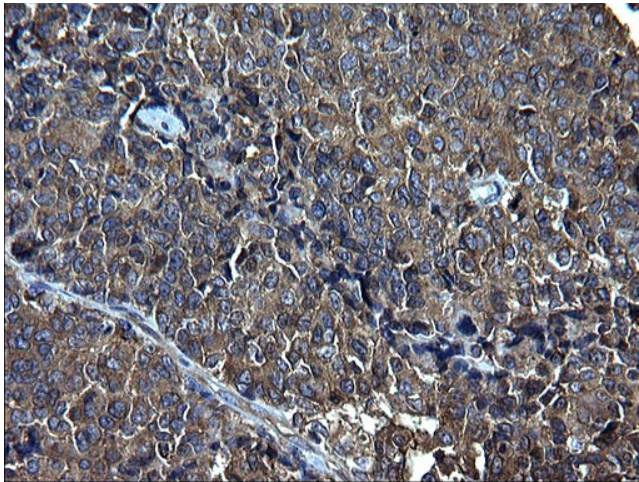
Immunohistochemical staining of paraffin-embedded Carcinoma of Human kidney tissue using anti-FNDC8 mouse monoclonal antibody. (Heat-induced epitope retrieval by 1mM EDTA in 10mM Tris, pH8.5, 120°C for 3min, TA507219)



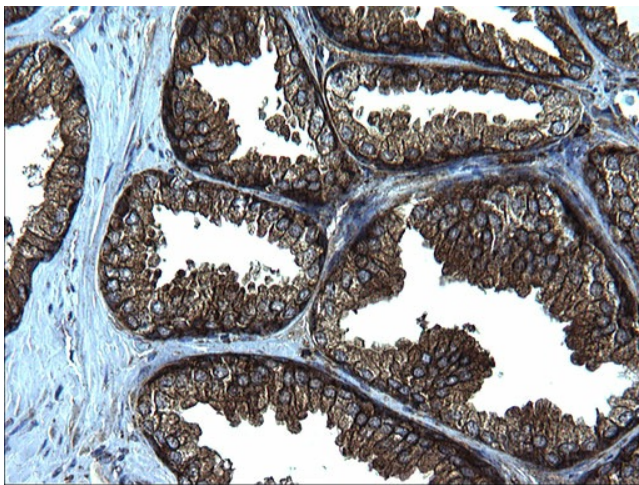
Immunohistochemical staining of paraffin-embedded Adenocarcinoma of Human ovary tissue using anti-FNDC8 mouse monoclonal antibody. (Heat-induced epitope retrieval by 1mM EDTA in 10mM Tris, pH8.5, 120°C for 3min, TA507219)



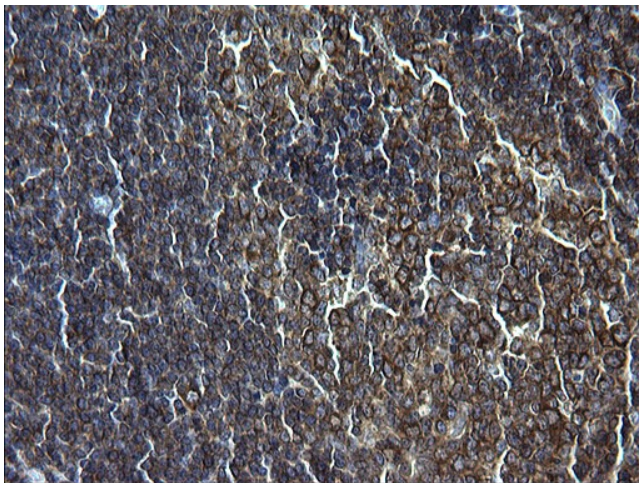
Immunohistochemical staining of paraffin-embedded Human pancreas tissue within the normal limits using anti-FNDC8 mouse monoclonal antibody. (Heat-induced epitope retrieval by 1mM EDTA in 10mM Tris, pH8.5, 120°C for 3min, TA507219)



Immunohistochemical staining of paraffin-embedded Adenocarcinoma of Human endometrium tissue using anti-FNDC8 mouse monoclonal antibody. (Heat-induced epitope retrieval by 1mM EDTA in 10mM Tris, pH8.5, 120°C for 3min, TA507219)



Immunohistochemical staining of paraffin-embedded Human prostate tissue within the normal limits using anti-FNDC8 mouse monoclonal antibody. (Heat-induced epitope retrieval by 1mM EDTA in 10mM Tris, pH8.5, 120°C for 3min, TA507219)



Immunohistochemical staining of paraffin-embedded Human lymph node tissue within the normal limits using anti-FNDC8 mouse monoclonal antibody. (Heat-induced epitope retrieval by 1mM EDTA in 10mM Tris, pH8.5, 120°C for 3min, TA507219)