

## Product datasheet for **TA507217M**

### **PAAF1 Mouse Monoclonal Antibody [Clone ID: OTI2G6]**

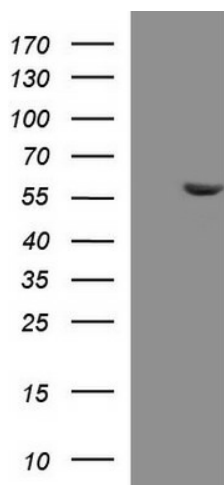
#### **Product data:**

Product Type:	Primary Antibodies
Clone Name:	OTI2G6
Applications:	WB
Recommended Dilution:	WB 1:1000
Reactivity:	Human
Host:	Mouse
Isotype:	IgG2b
Clonality:	Monoclonal
Immunogen:	Full length human recombinant protein of human PAAF1(NP_079431) produced in HEK293T cell.
Formulation:	PBS (pH 7.3) containing 1% BSA, 50% glycerol and 0.02% sodium azide.
Concentration:	1 mg/ml
Purification:	Purified from mouse ascites fluids or tissue culture supernatant by affinity chromatography (protein A/G)
Conjugation:	Unconjugated
Storage:	Store at -20°C as received.
Stability:	Stable for 12 months from date of receipt.
Predicted Protein Size:	42 kDa
Gene Name:	proteasomal ATPase associated factor 1
Database Link:	<a href="#">NP_079431</a> <a href="#">Entrez Gene 80227 Human</a> <a href="#">Q9BRP4</a>
Background:	This gene encodes a WD repeat-containing protein involved in regulation of association of proteasome components. During HIV infection, the encoded protein is thought to promote provirus transcription through recruitment of the 19S regulatory complex. Alternatively spliced transcript variants encoding multiple isoforms have been observed for this gene. [provided by RefSeq, Jun

[View online »](#)

Synonyms: PAAF; Rpn14; WDR71

### Product images:



HEK293T cells were transfected with the pCMV6-ENTRY control (Left lane) or pCMV6-ENTRY PAAF1 ([RC202994], Right lane) cDNA for 48 hrs and lysed. Equivalent amounts of cell lysates (5 ug per lane) were separated by SDS-PAGE and immunoblotted with anti-PAAF1. Positive lysates [LY410872] (100ug) and [LC410872] (20ug) can be purchased separately from OriGene.