

Product datasheet for **TA507215S**

SPHK1 Mouse Monoclonal Antibody [Clone ID: OT11A6]

Product data:

Product Type:	Primary Antibodies
Clone Name:	OT11A6
Applications:	IF, IHC, WB
Recommended Dilution:	WB 1:400~4000, IHC 1:150, IF 1:100
Reactivity:	Human
Host:	Mouse
Isotype:	IgG2a
Clonality:	Monoclonal
Immunogen:	Full length human recombinant protein of human SPHK1(NP_068807) produced in HEK293T cell.
Formulation:	PBS (pH 7.3) containing 1% BSA, 50% glycerol and 0.02% sodium azide.
Concentration:	1 mg/ml
Purification:	Purified from mouse ascites fluids or tissue culture supernatant by affinity chromatography (protein A/G)
Conjugation:	Unconjugated
Storage:	Store at -20°C as received.
Stability:	Stable for 12 months from date of receipt.
Predicted Protein Size:	43.8 kDa
Gene Name:	sphingosine kinase 1
Database Link:	NP_068807 Entrez Gene 8877 Human Q9NYA1



[View online »](#)

Background:

The protein encoded by this gene catalyzes the phosphorylation of sphingosine to form sphingosine-1-phosphate (S1P), a lipid mediator with both intra- and extracellular functions. Intracellularly, S1P regulates proliferation and survival, and extracellularly, it is a ligand for cell surface G protein-coupled receptors. This protein, and its product S1P, play a key role in TNF-alpha signaling and the NF-kappa-B activation pathway important in inflammatory, antiapoptotic, and immune processes. Alternatively spliced transcript variants encoding different isoforms have been found for this gene. [provided by RefSeq, Sep 2011]

Synonyms:

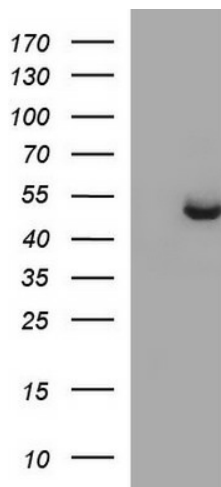
SPHK

Protein Families:

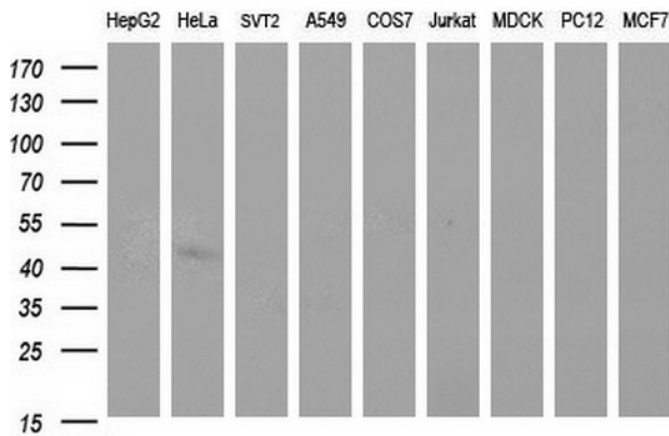
Druggable Genome

Protein Pathways:

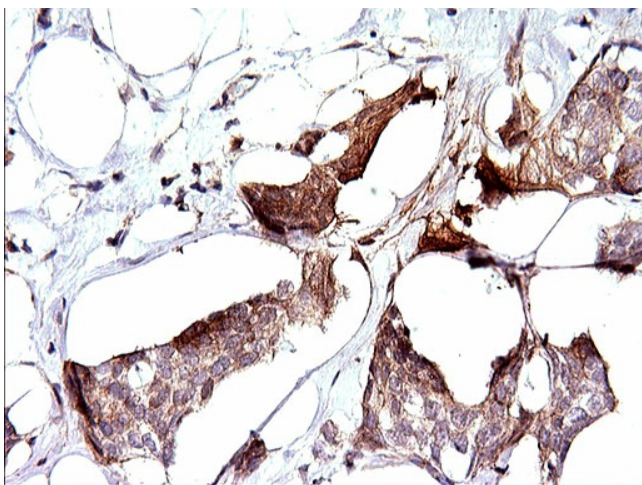
Calcium signaling pathway, Fc gamma R-mediated phagocytosis, Metabolic pathways, Sphingolipid metabolism, VEGF signaling pathway

Product images:


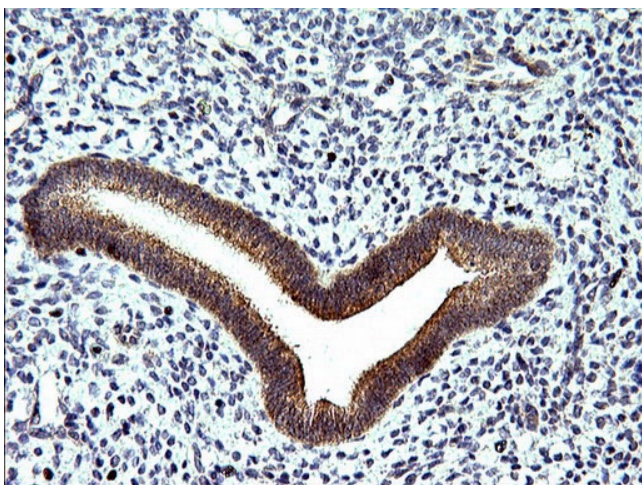
HEK293T cells were transfected with the pCMV6-ENTRY control (Cat# [PS100001], Left lane) or pCMV6-ENTRY SPHK1 (Cat# [RC203398], Right lane) cDNA for 48 hrs and lysed. Equivalent amounts of cell lysates (5 ug per lane) were separated by SDS-PAGE and immunoblotted with anti-SPHK1(Cat# [TA507215]). Positive lysates [LY411847] (100ug) and [LC411847] (20ug) can be purchased separately from OriGene.



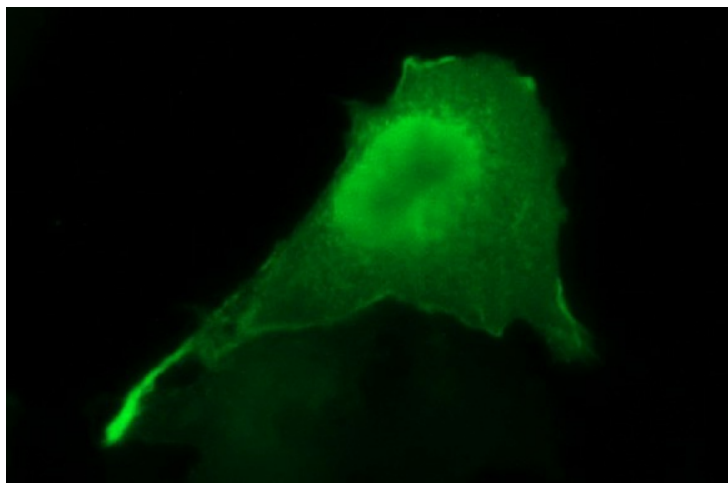
Western blot analysis of extracts (35ug) from 9 different cell lines by using anti-SPHK1 monoclonal antibody (HepG2: human; HeLa: human; SVT2: mouse; A549: human; COS7: monkey; Jurkat: human; MDCK: canine; PC12: rat; MCF7: human).



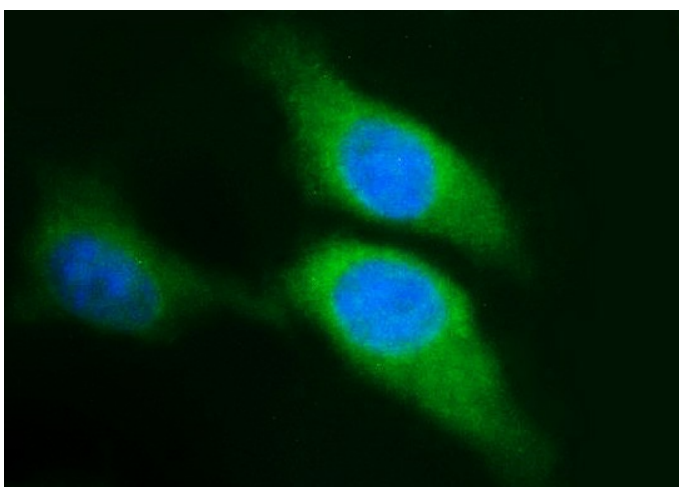
Immunohistochemical staining of paraffin-embedded Adenocarcinoma of Human breast tissue using anti-SPHK1 mouse monoclonal antibody. (Heat-induced epitope retrieval by 1mM EDTA in 10mM Tris, pH8.5, 120°C for 3min, [TA507215])



Immunohistochemical staining of paraffin-embedded Human endometrium tissue within the normal limits using anti-SPHK1 mouse monoclonal antibody. (Heat-induced epitope retrieval by 1mM EDTA in 10mM Tris, pH8.5, 120°C for 3min, [TA507215])



Anti-SPHK1 mouse monoclonal antibody ([TA507215]) immunofluorescent staining of COS7 cells transiently transfected by pCMV6-ENTRY SPHK1 ([RC203398]).



Immunofluorescent staining of HeLa cells using anti-SPHK1 mouse monoclonal antibody ([TA507215]).