

## Product datasheet for **TA507213**

### SCF (KITLG) Mouse Monoclonal Antibody [Clone ID: OTI5E9]

#### Product data:

Product Type:	Primary Antibodies
Clone Name:	OTI5E9
Applications:	WB
Recommended Dilution:	WB 1:4000
Reactivity:	Human
Host:	Mouse
Isotype:	IgG1
Clonality:	Monoclonal
Immunogen:	Full length human recombinant protein of human KITLG(NP_000890) produced in HEK293T cell.
Formulation:	PBS (pH 7.3) containing 1% BSA, 50% glycerol and 0.02% sodium azide.
Concentration:	1 mg/ml
Purification:	Purified from mouse ascites fluids or tissue culture supernatant by affinity chromatography (protein A/G)
Conjugation:	Unconjugated
Storage:	Store at -20°C as received.
Stability:	Stable for 12 months from date of receipt.
Predicted Protein Size:	27.9 kDa
Gene Name:	KIT ligand
Database Link:	<a href="#">NP_000890</a> <a href="#">Entrez Gene 4254 Human</a> <a href="#">P21583</a>
Background:	This gene encodes the ligand of the tyrosine-kinase receptor encoded by the KIT locus. This ligand is a pleiotropic factor that acts in utero in germ cell and neural cell development, and hematopoiesis, all believed to reflect a role in cell migration. In adults, it functions pleiotropically, while mostly noted for its continued requirement in hematopoiesis. Two transcript variants encoding different isoforms have been found for this gene. [provided by RefSeq, Jul 2008]



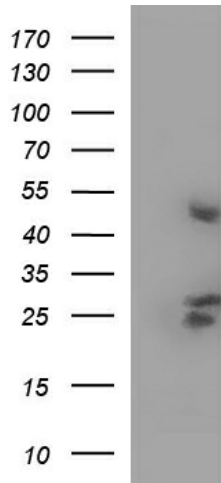
[View online »](#)

**Synonyms:** FPH2; FPHH; Kitl; KL-1; MGF; SCF; SF; SHEP7

**Protein Families:** Druggable Genome, Transmembrane

**Protein Pathways:** Cytokine-cytokine receptor interaction, Hematopoietic cell lineage, Melanogenesis, Pathways in cancer

**Product images:**



HEK293T cells were transfected with the pCMV6-ENTRY control (Left lane) or pCMV6-ENTRY KITLG ([RC216131], Right lane) cDNA for 48 hrs and lysed. Equivalent amounts of cell lysates (5 ug per lane) were separated by SDS-PAGE and immunoblotted with anti-KITLG. Positive lysates [LY400322] (100ug) and [LC400322] (20ug) can be purchased separately from OriGene.