

## Product datasheet for **TA507209AM**

### SCF (KITLG) Mouse Monoclonal Antibody (Biotin conjugated) [Clone ID: OTI5F6]

#### Product data:

Product Type:	Primary Antibodies
Clone Name:	OTI5F6
Applications:	IHC, WB
Recommended Dilution:	WB 1:4000, IHC 1:150
Reactivity:	Human
Host:	Mouse
Isotype:	IgG1
Clonality:	Monoclonal
Immunogen:	Full length human recombinant protein of human KITLG(NP_000890) produced in HEK293T cell.
Formulation:	PBS (pH 7.3) containing 1% BSA, 50% glycerol and 0.02% sodium azide.
Concentration:	0.5 mg/ml
Purification:	Purified from mouse ascites fluids or tissue culture supernatant by affinity chromatography (protein A/G)
Conjugation:	Biotin
Storage:	Store at -20°C as received.
Stability:	Stable for 12 months from date of receipt.
Predicted Protein Size:	27.9 kDa
Gene Name:	KIT ligand
Database Link:	<a href="#">NP_000890</a> <a href="#">Entrez Gene 4254 Human</a> <a href="#">P21583</a>
Background:	This gene encodes the ligand of the tyrosine-kinase receptor encoded by the KIT locus. This ligand is a pleiotropic factor that acts in utero in germ cell and neural cell development, and hematopoiesis, all believed to reflect a role in cell migration. In adults, it functions pleiotropically, while mostly noted for its continued requirement in hematopoiesis. Two transcript variants encoding different isoforms have been found for this gene. [provided by RefSeq, Jul 2008]



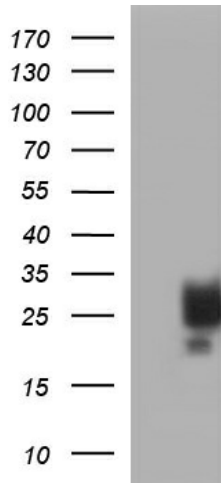
[View online »](#)

**Synonyms:** FPH2; FPHH; Kitl; KL-1; MGF; SCF; SF; SHEP7

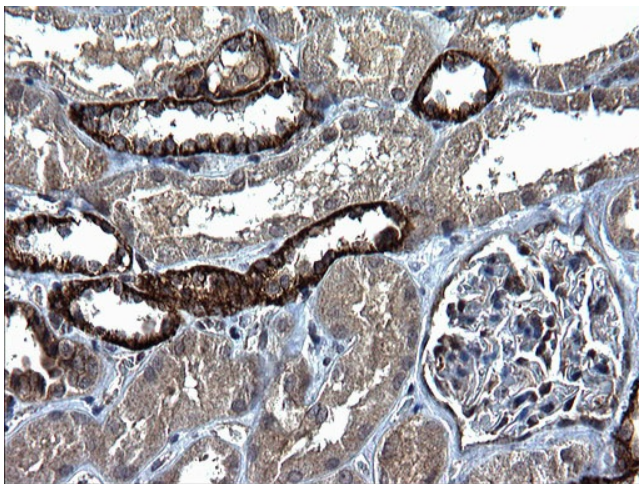
**Protein Families:** Druggable Genome, Transmembrane

**Protein Pathways:** Cytokine-cytokine receptor interaction, Hematopoietic cell lineage, Melanogenesis, Pathways in cancer

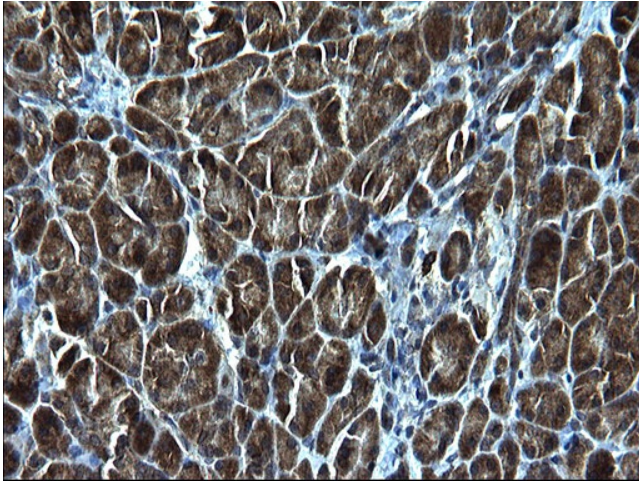
**Product images:**



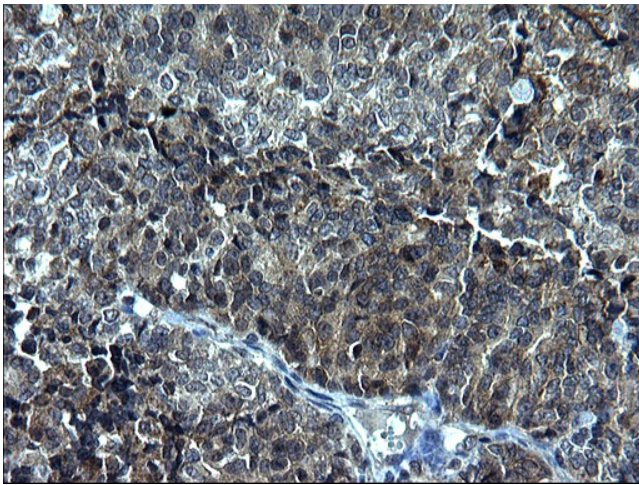
HEK293T cells were transfected with the pCMV6-ENTRY control (Cat# [PS100001], Left lane) or pCMV6-ENTRY KITLG (Cat# [RC216131], Right lane) cDNA for 48 hrs and lysed. Equivalent amounts of cell lysates (5 ug per lane) were separated by SDS-PAGE and immunoblotted with anti-KITLG (Cat# [TA507209]). Positive lysates [LY400322] (100ug) and [LC400322] (20ug) can be purchased separately from OriGene.



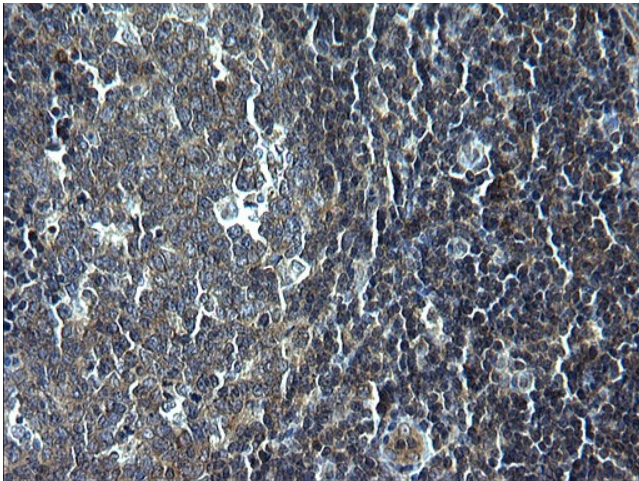
Immunohistochemical staining of paraffin-embedded Human Kidney tissue within the normal limits using anti-KITLG mouse monoclonal antibody. (Heat-induced epitope retrieval by 1mM EDTA in 10mM Tris, pH8.5, 120°C for 3min, [TA507209])



Immunohistochemical staining of paraffin-embedded Human pancreas tissue within the normal limits using anti-KITLG mouse monoclonal antibody. (Heat-induced epitope retrieval by 1mM EDTA in 10mM Tris, pH8.5, 120°C for 3min, [TA507209])



Immunohistochemical staining of paraffin-embedded Adenocarcinoma of Human endometrium tissue using anti-KITLG mouse monoclonal antibody. (Heat-induced epitope retrieval by 1mM EDTA in 10mM Tris, pH8.5, 120°C for 3min, [TA507209])



Immunohistochemical staining of paraffin-embedded Human lymph node tissue within the normal limits using anti-KITLG mouse monoclonal antibody. (Heat-induced epitope retrieval by 1mM EDTA in 10mM Tris, pH8.5, 120°C for 3min, [TA507209])