

## Product datasheet for **TA507205M**

### VEGFB Mouse Monoclonal Antibody [Clone ID: OT11H9]

#### Product data:

Product Type:	Primary Antibodies
Clone Name:	OT11H9
Applications:	IF, IHC, WB
Recommended Dilution:	WB 1:4000, IHC 1:150, IF 1:100
Reactivity:	Human, Mouse, Rat
Host:	Mouse
Isotype:	IgG1
Clonality:	Monoclonal
Immunogen:	Full length human recombinant protein of human VEGFB(NP_003368) produced in HEK293T cell.
Formulation:	PBS (pH 7.3) containing 1% BSA, 50% glycerol and 0.02% sodium azide.
Concentration:	1 mg/ml
Purification:	Purified from mouse ascites fluids or tissue culture supernatant by affinity chromatography (protein A/G)
Conjugation:	Unconjugated
Storage:	Store at -20°C as received.
Stability:	Stable for 12 months from date of receipt.
Predicted Protein Size:	21.4 kDa
Gene Name:	vascular endothelial growth factor B
Database Link:	<a href="#">NP_003368</a> <a href="#">Entrez Gene 22340 Mouse</a> <a href="#">Entrez Gene 89811 Rat</a> <a href="#">Entrez Gene 7423 Human</a> <a href="#">P49765</a>



[View online »](#)

**Background:**

This gene encodes a member of the PDGF (platelet-derived growth factor)/VEGF (vascular endothelial growth factor) family. The VEGF family members regulate the formation of blood vessels and are involved in endothelial cell physiology. This member is a ligand for VEGFR-1 (vascular endothelial growth factor receptor 1) and NRP-1 (neuropilin-1). Studies in mice showed that this gene was co-expressed with nuclear-encoded mitochondrial genes and the encoded protein specifically controlled endothelial uptake of fatty acids. Alternatively spliced transcript variants encoding distinct isoforms have been identified. [provided by RefSeq, Sep 2011]

**Synonyms:**

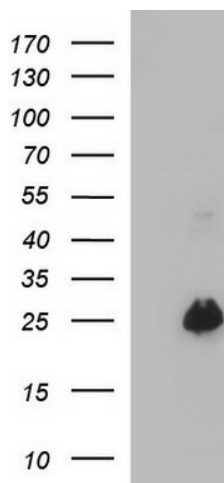
VEGFL; VRF

**Protein Families:**

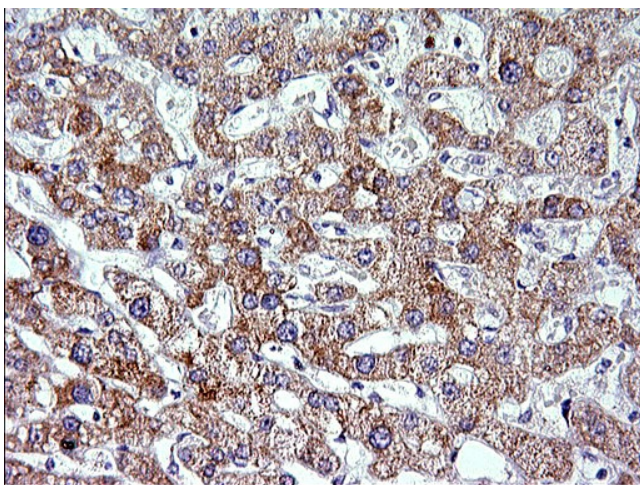
Druggable Genome, Secreted Protein

**Protein Pathways:**

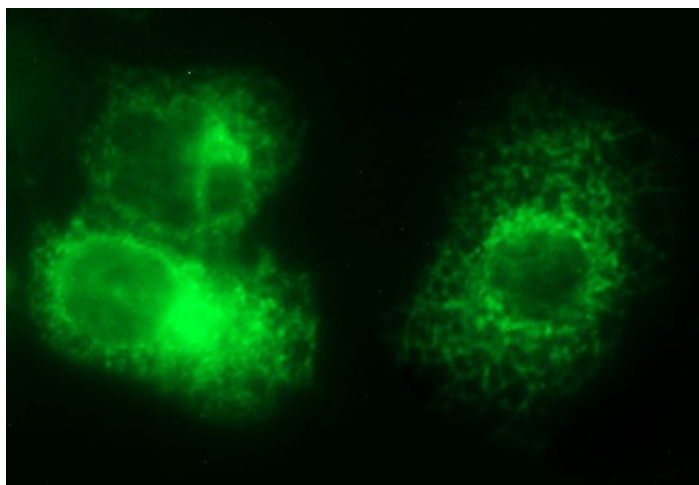
Bladder cancer, Cytokine-cytokine receptor interaction, Focal adhesion, mTOR signaling pathway, Pancreatic cancer, Pathways in cancer, Renal cell carcinoma

**Product images:**


HEK293T cells were transfected with the pCMV6-ENTRY control (Cat# [PS100001], Left lane) or pCMV6-ENTRY VEGFB (Cat# [RC202426], Right lane) cDNA for 48 hrs and lysed. Equivalent amounts of cell lysates (5 ug per lane) were separated by SDS-PAGE and immunoblotted with anti-VEGFB (Cat# [TA507205]). Positive lysates [LY418732] (100ug) and [LC418732] (20ug) can be purchased separately from OriGene.



Immunohistochemical staining of paraffin-embedded Human liver tissue within the normal limits using anti-VEGFB mouse monoclonal antibody. Heat-induced epitope retrieval by EDTA solution buffer pH 8.0 at 120°C for 3 min.



Anti-VEGFB mouse monoclonal antibody ([TA507205]) immunofluorescent staining of COS7 cells transiently transfected by pCMV6-ENTRY VEGFB ([RC202426]).