

## Product datasheet for **TA507181AM**

### SCARB1 Mouse Monoclonal Antibody (Biotin conjugated) [Clone ID: OTI1G4]

#### Product data:

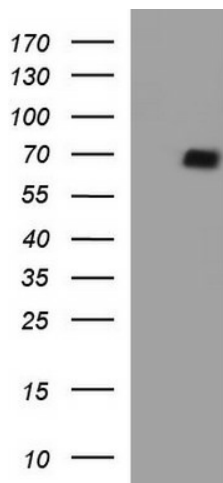
|                         |  |
|-------------------------|--|
| Product Type:           | Primary Antibodies   |
| Clone Name:             | OTI1G4   |
| Applications:           | IF, IHC, WB  |
| Recommended Dilution:   | WB 1:4000, IHC 1:150, IF 1:100   |
| Reactivity:             | Human  |
| Host:                   | Mouse  |
| Isotype:                | IgG1   |
| Clonality:              | Monoclonal   |
| Immunogen:              | Full length human recombinant protein of human SCARB1(NP_005496) produced in HEK293T cell.   |
| Formulation:            | PBS (pH 7.3) containing 1% BSA, 50% glycerol and 0.02% sodium azide.   |
| Concentration:          | 0.5 mg/ml  |
| Purification:           | Purified from mouse ascites fluids or tissue culture supernatant by affinity chromatography (protein A/G)  |
| Conjugation:            | Biotin   |
| Storage:                | Store at -20°C as received.  |
| Stability:              | Stable for 12 months from date of receipt.   |
| Predicted Protein Size: | 56.8 kDa   |
| Gene Name:              | scavenger receptor class B member 1  |
| Database Link:          | <a href="#">NP_005496</a><br><a href="#">Entrez Gene 949 Human</a><br><a href="#">Q8WTV0</a>   |
| Background:             | The protein encoded by this gene is a plasma membrane receptor for high density lipoprotein cholesterol (HDL). The encoded protein mediates cholesterol transfer to and from HDL. In addition, this protein is a receptor for hepatitis C virus glycoprotein E2. Two transcript variants encoding different isoforms have been found for this gene. [provided by RefSeq, Mar 2016] |
| Synonyms:               | CD36L1; CLA-1; CLA1; HDLQTL6; SR-BI; SRB1  |



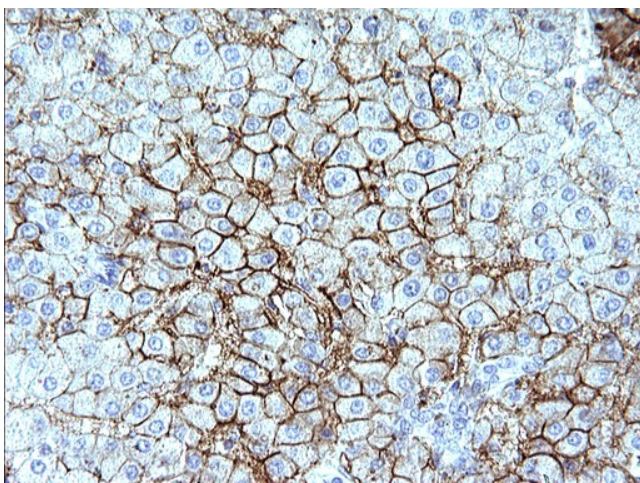
[View online »](#)

Protein Families: Druggable Genome, Transmembrane

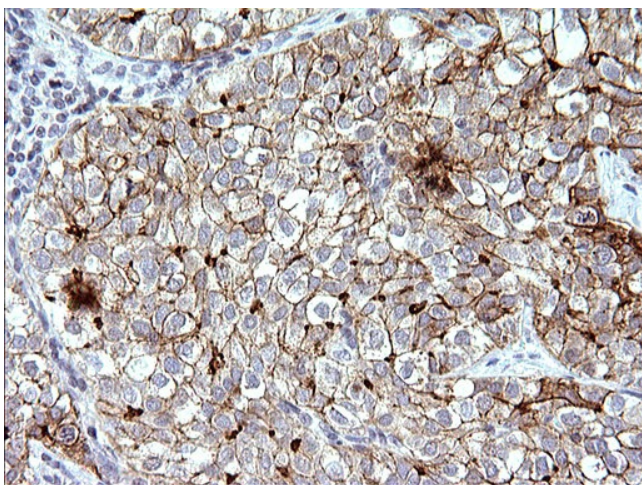
### Product images:



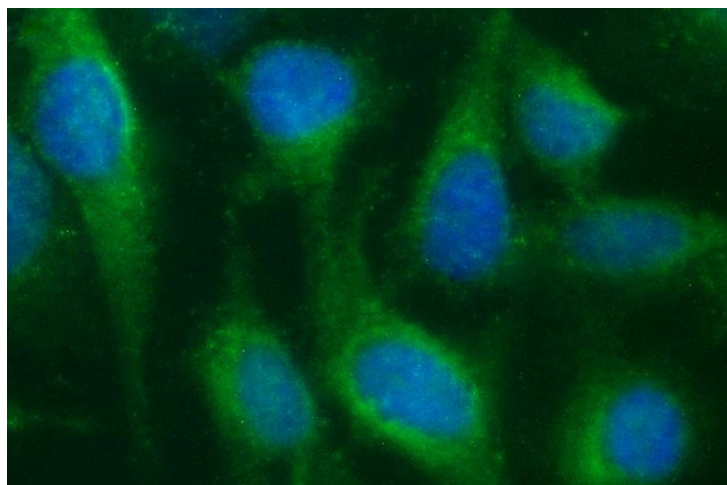
HEK293T cells were transfected with the pCMV6-ENTRY control (Left lane) or pCMV6-ENTRY SCARB1 ([RC210264], Right lane) cDNA for 48 hrs and lysed. Equivalent amounts of cell lysates (5 ug per lane) were separated by SDS-PAGE and immunoblotted with anti-SCARB1. Positive lysates [LY401684] (100ug) and [LC401684] (20ug) can be purchased separately from OriGene.



Immunohistochemical staining of paraffin-embedded Human liver tissue within the normal limits using anti-SCARB1 mouse monoclonal antibody. (Heat-induced epitope retrieval by 10mM citric buffer, pH6.0, 120°C for 3min, [TA507181])



Immunohistochemical staining of paraffin-embedded Carcinoma of Human liver tissue using anti-SCARB1 mouse monoclonal antibody. (Heat-induced epitope retrieval by 10mM citric buffer, pH6.0, 120°C for 3min, [TA507181])



Immunofluorescent staining of HeLa cells using anti-SCARB1 mouse monoclonal antibody ([TA507181]).