

## Product datasheet for **TA507162BM**

### ICAM3 Mouse Monoclonal Antibody (HRP conjugated) [Clone ID: OTI1G4]

#### Product data:

|                         |   |
|-------------------------|---|
| Product Type:           | Primary Antibodies  |
| Clone Name:             | OTI1G4  |
| Applications:           | WB  |
| Recommended Dilution:   | WB 1:400~4000   |
| Reactivity:             | Human   |
| Host:                   | Mouse   |
| Isotype:                | IgG2b   |
| Clonality:              | Monoclonal  |
| Immunogen:              | Full length human recombinant protein of human ICAM3(NP_002153) produced in HEK293T cell.                 |
| Formulation:            | PBS (pH 7.3) containing 1% BSA, 50% glycerol.   |
| Concentration:          | 0.5 mg/ml   |
| Purification:           | Purified from mouse ascites fluids or tissue culture supernatant by affinity chromatography (protein A/G) |
| Conjugation:            | HRP   |
| Storage:                | Store at -20°C as received.   |
| Stability:              | Stable for 12 months from date of receipt.  |
| Predicted Protein Size: | 56.4 kDa  |
| Gene Name:              | intercellular adhesion molecule 3   |
| Database Link:          | <a href="#">NP_002153</a><br><a href="#">Entrez Gene 3385 Human</a><br><a href="#">P32942</a>             |

**Background:** The protein encoded by this gene is a member of the intercellular adhesion molecule (ICAM) family. All ICAM proteins are type I transmembrane glycoproteins, contain 2-9 immunoglobulin-like C2-type domains, and bind to the leukocyte adhesion LFA-1 protein. This protein is constitutively and abundantly expressed by all leucocytes and may be the most important ligand for LFA-1 in the initiation of the immune response. It functions not only as an adhesion molecule, but also as a potent signalling molecule. [provided by RefSeq, Jul 2008]

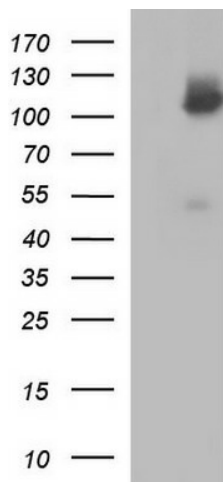


[View online »](#)

**Synonyms:** CD50; CDW50; ICAM-R

**Protein Families:** ES Cell Differentiation/IPS, Transmembrane

**Protein Pathways:** Cell adhesion molecules (CAMs)

**Product images:**

HEK293T cells were transfected with the pCMV6-ENTRY control (Left lane) or pCMV6-ENTRY ICAM3 ([RC208919], Right lane) cDNA for 48 hrs and lysed. Equivalent amounts of cell lysates (5 ug per lane) were separated by SDS-PAGE and immunoblotted with anti-ICAM3. Positive lysates [LY400788] (100ug) and [LC400788] (20ug) can be purchased separately from OriGene.