

Product datasheet for **TA507162**

ICAM3 Mouse Monoclonal Antibody [Clone ID: OTI1G4]

Product data:

Product Type:	Primary Antibodies
Clone Name:	OTI1G4
Applications:	WB
Recommended Dilution:	WB 1:400~4000
Reactivity:	Human
Host:	Mouse
Isotype:	IgG2b
Clonality:	Monoclonal
Immunogen:	Full length human recombinant protein of human ICAM3(NP_002153) produced in HEK293T cell.
Formulation:	PBS (pH 7.3) containing 1% BSA, 50% glycerol and 0.02% sodium azide.
Concentration:	1 mg/ml
Purification:	Purified from mouse ascites fluids or tissue culture supernatant by affinity chromatography (protein A/G)
Conjugation:	Unconjugated
Storage:	Store at -20°C as received.
Stability:	Stable for 12 months from date of receipt.
Predicted Protein Size:	56.4 kDa
Gene Name:	intercellular adhesion molecule 3
Database Link:	NP_002153 Entrez Gene 3385 Human P32942

Background: The protein encoded by this gene is a member of the intercellular adhesion molecule (ICAM) family. All ICAM proteins are type I transmembrane glycoproteins, contain 2-9 immunoglobulin-like C2-type domains, and bind to the leukocyte adhesion LFA-1 protein. This protein is constitutively and abundantly expressed by all leucocytes and may be the most important ligand for LFA-1 in the initiation of the immune response. It functions not only as an adhesion molecule, but also as a potent signalling molecule. [provided by RefSeq, Jul 2008]

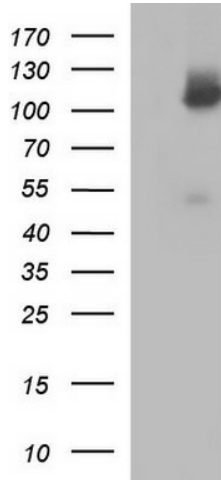


[View online »](#)

Synonyms: CD50; CDW50; ICAM-R

Protein Families: ES Cell Differentiation/IPS, Transmembrane

Protein Pathways: Cell adhesion molecules (CAMs)

Product images:

HEK293T cells were transfected with the pCMV6-ENTRY control (Left lane) or pCMV6-ENTRY ICAM3 ([RC208919], Right lane) cDNA for 48 hrs and lysed. Equivalent amounts of cell lysates (5 ug per lane) were separated by SDS-PAGE and immunoblotted with anti-ICAM3. Positive lysates [LY400788] (100ug) and [LC400788] (20ug) can be purchased separately from OriGene.