

Product datasheet for **TA507149AM**

Mannan Binding Lectin (MBL2) Mouse Monoclonal Antibody (Biotin conjugated) [Clone ID: OTI2G5]

Product data:

Product Type:	Primary Antibodies
Clone Name:	OTI2G5
Applications:	WB
Recommended Dilution:	WB 1:400~4000
Reactivity:	Human
Host:	Mouse
Isotype:	IgG1
Clonality:	Monoclonal
Immunogen:	Full length human recombinant protein of human MBL2(NP_000233) produced in HEK293T cell.
Formulation:	PBS (pH 7.3) containing 1% BSA, 50% glycerol and 0.02% sodium azide.
Concentration:	0.5 mg/ml
Purification:	Purified from mouse ascites fluids or tissue culture supernatant by affinity chromatography (protein A/G)
Conjugation:	Biotin
Storage:	Store at -20°C as received.
Stability:	Stable for 12 months from date of receipt.
Predicted Protein Size:	24 kDa
Gene Name:	mannose binding lectin 2
Database Link:	NP_000233 Entrez Gene 4153 Human P11226



[View online »](#)

Background:

This gene encodes the soluble mannan-binding lectin or mannan-binding protein found in serum. The protein encoded belongs to the collectin family and is an important element in the innate immune system. The protein recognizes mannanose and N-acetylglucosamine on many microorganisms, and is capable of activating the classical complement pathway. Deficiencies of this gene have been associated with susceptibility to autoimmune and infectious diseases. [provided by RefSeq, Jul 2008]

Synonyms:

COLEC1; HSMBPC; MBL; MBL2D; MBP; MBP-C; MBP1; MBPD

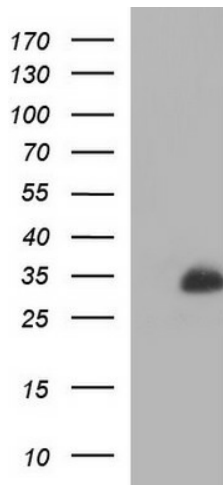
Protein Families:

Druggable Genome

Protein Pathways:

Complement and coagulation cascades

Product images:



HEK293T cells were transfected with the pCMV6-ENTRY control (Left lane) or pCMV6-ENTRY MBL2 ([RC210143], Right lane) cDNA for 48 hrs and lysed. Equivalent amounts of cell lysates (5 ug per lane) were separated by SDS-PAGE and immunoblotted with anti-MBL2. Positive lysates [LY424849] (100ug) and [LC424849] (20ug) can be purchased separately from OriGene.