

## Product datasheet for **TA507147M**

### Mannan Binding Lectin (MBL2) Mouse Monoclonal Antibody [Clone ID: OTI1A12]

#### Product data:

Product Type:	Primary Antibodies
Clone Name:	OTI1A12
Applications:	IF, IHC, WB
Recommended Dilution:	WB 1:4000, IHC 1:150
Reactivity:	Human
Host:	Mouse
Isotype:	IgG1
Clonality:	Monoclonal
Immunogen:	Full length human recombinant protein of human MBL2(NP_000233) produced in HEK293T cell.
Formulation:	PBS (pH 7.3) containing 1% BSA, 50% glycerol and 0.02% sodium azide.
Concentration:	1 mg/ml
Purification:	Purified from mouse ascites fluids or tissue culture supernatant by affinity chromatography (protein A/G)
Conjugation:	Unconjugated
Storage:	Store at -20°C as received.
Stability:	Stable for 12 months from date of receipt.
Predicted Protein Size:	24 kDa
Gene Name:	mannose binding lectin 2
Database Link:	<a href="#">NP_000233</a> <a href="#">Entrez Gene 4153 Human</a> <a href="#">P11226</a>
Background:	This gene encodes the soluble mannose-binding lectin or mannose-binding protein found in serum. The protein encoded belongs to the collectin family and is an important element in the innate immune system. The protein recognizes mannose and N-acetylglucosamine on many microorganisms, and is capable of activating the classical complement pathway. Deficiencies of this gene have been associated with susceptibility to autoimmune and infectious diseases. [provided by RefSeq, Jul 2008]



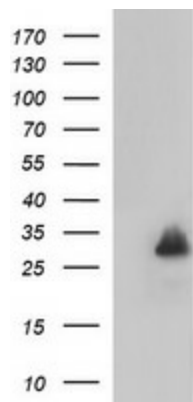
[View online »](#)

**Synonyms:** COLEC1; HSMBPC; MBL; MBL2D; MBP; MBP-C; MBP1; MBPD

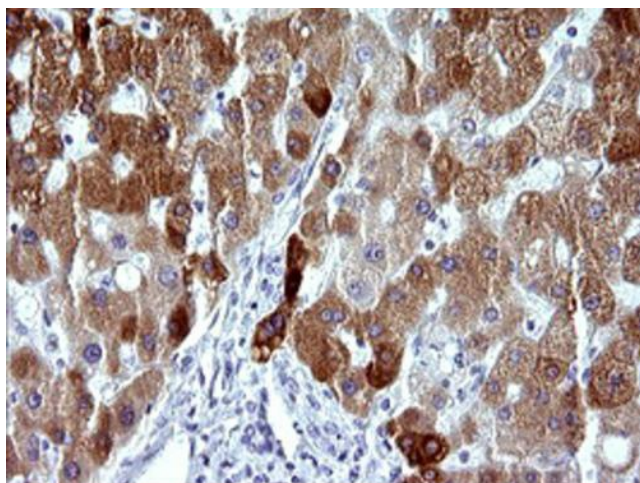
**Protein Families:** Druggable Genome

**Protein Pathways:** Complement and coagulation cascades

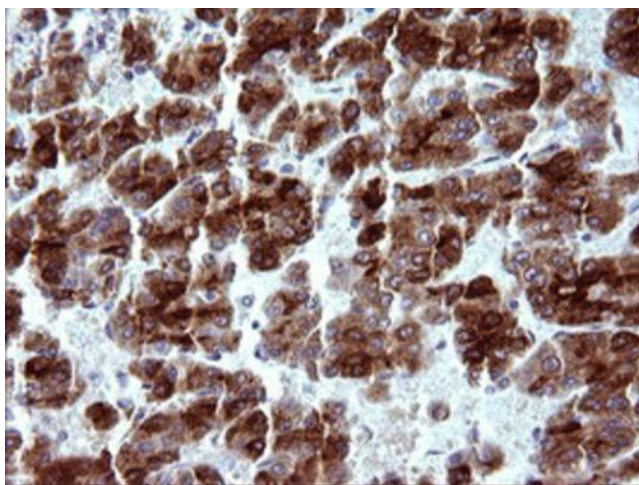
### Product images:



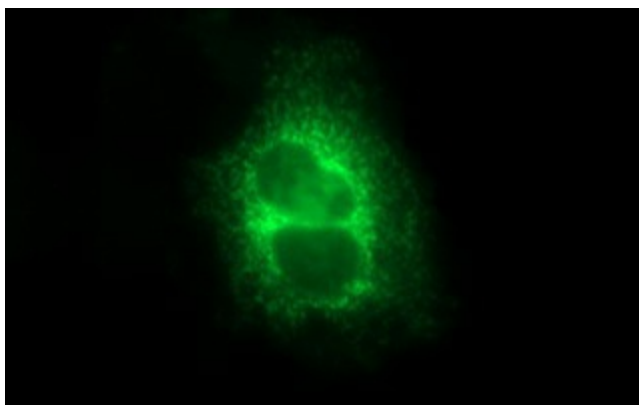
HEK293T cells were transfected with the pCMV6-ENTRY control (Left lane) or pCMV6-ENTRY MBL2 ([RC210143], Right lane) cDNA for 48 hrs and lysed. Equivalent amounts of cell lysates (5 ug per lane) were separated by SDS-PAGE and immunoblotted with anti-MBL2. Positive lysates [LY424849] (100ug) and [LC424849] (20ug) can be purchased separately from OriGene.



Immunohistochemical staining of paraffin-embedded Human liver tissue within the normal limits using anti-MBL2 mouse monoclonal antibody ([TA507147]) at 1:150 dilution. Heat-induced epitope retrieval by EDTA solution buffer pH 8.0 at 120°C for 3 min.



Immunohistochemical staining of paraffin-embedded Carcinoma of Human liver tissue using anti-MBL2 mouse monoclonal antibody ([TA507147]) at 1:150 dilution. Heat-induced epitope retrieval by EDTA solution buffer pH 8.0 at 120°C for 3 min.



Immunofluorescent staining of COS7 cells transiently transfected by pCMV6-ENTRY MBL2 ([RC210143]) using Anti-MBL2 mouse monoclonal antibody ([TA507147]) at 1:100 dilution.