

## Product datasheet for **TA507136**

### Sex Hormone Binding Globulin (SHBG) Mouse Monoclonal Antibody [Clone ID: OTI1D10]

#### Product data:

Product Type:	Primary Antibodies
Clone Name:	OTI1D10
Applications:	IHC, WB
Recommended Dilution:	WB 1:4000, IHC 1:150
Reactivity:	Human
Host:	Mouse
Isotype:	IgG2b
Clonality:	Monoclonal
Immunogen:	Full length human recombinant protein of human SHBG(NP_001139751) produced in HEK293T cell.
Formulation:	PBS (pH 7.3) containing 1% BSA, 50% glycerol and 0.02% sodium azide.
Concentration:	1 mg/ml
Purification:	Purified from mouse ascites fluids or tissue culture supernatant by affinity chromatography (protein A/G)
Conjugation:	Unconjugated
Storage:	Store at -20°C as received.
Stability:	Stable for 12 months from date of receipt.
Predicted Protein Size:	38.4 kDa
Gene Name:	sex hormone binding globulin
Database Link:	<a href="#">NP_001139751</a> <a href="#">Entrez Gene 6462 Human</a> <a href="#">P04278</a>
Background:	This gene encodes a steroid binding protein that was first described as a plasma protein secreted by the liver but is now thought to participate in the regulation of steroid responses. The encoded protein binds each steroid molecule as a dimer formed from identical or nearly identical monomers. The use of alternate promoters and alternatively spliced transcripts have been described. Multiple transcript variants encoding different isoforms have been found for this gene. [provided by RefSeq, Apr 2009]

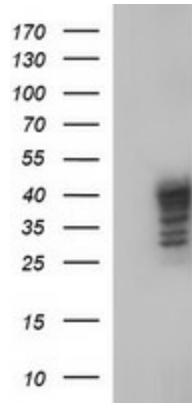


[View online »](#)

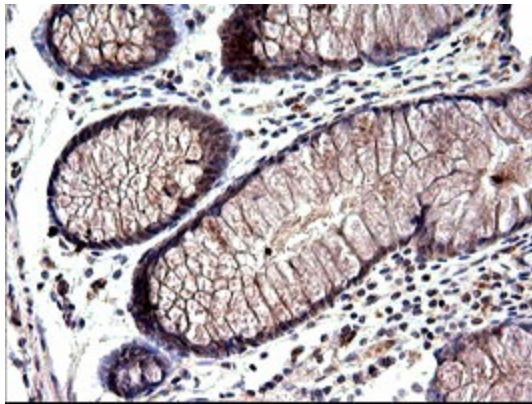
**Synonyms:** ABP; SBP; TEBG

**Protein Families:** Druggable Genome, Secreted Protein

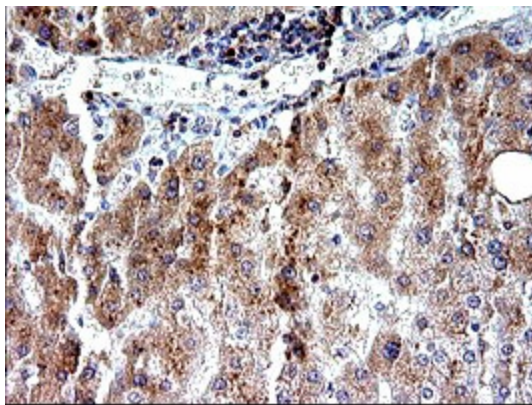
**Product images:**



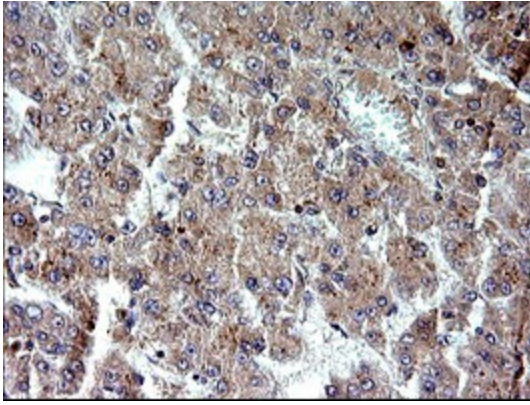
HEK293T cells were transfected with the pCMV6-ENTRY control (Left lane) or pCMV6-ENTRY SHBG ([RC228307], Right lane) cDNA for 48 hrs and lysed. Equivalent amounts of cell lysates (5 ug per lane) were separated by SDS-PAGE and immunoblotted with anti-SHBG. Positive lysates [LY431335] (100ug) and [LC431335] (20ug) can be purchased separately from OriGene.



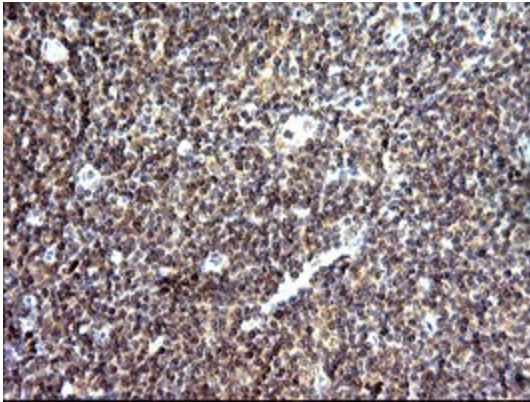
Immunohistochemical staining of paraffin-embedded Human colon tissue within the normal limits using anti-SHBG mouse monoclonal antibody. (Heat-induced epitope retrieval by 10mM citric buffer, pH6.0, 120°C for 3min, TA507136)



Immunohistochemical staining of paraffin-embedded Human liver tissue within the normal limits using anti-SHBG mouse monoclonal antibody. (Heat-induced epitope retrieval by 10mM citric buffer, pH6.0, 120°C for 3min, TA507136)



Immunohistochemical staining of paraffin-embedded Carcinoma of Human liver tissue using anti-SHBG mouse monoclonal antibody. (Heat-induced epitope retrieval by 10mM citric buffer, pH6.0, 120°C for 3min, TA507136)



Immunohistochemical staining of paraffin-embedded Human lymph node tissue within the normal limits using anti-SHBG mouse monoclonal antibody. (Heat-induced epitope retrieval by 10mM citric buffer, pH6.0, 120°C for 3min, TA507136)