

Product datasheet for **TA507131BM**

Fibrinogen gamma chain (FGG) Mouse Monoclonal Antibody (HRP conjugated) [Clone ID: OTI3A7]

Product data:

Product Type:	Primary Antibodies
Clone Name:	OTI3A7
Applications:	IF, WB
Recommended Dilution:	WB: 1:400-1:2000, IF: 1:50-1:100
Reactivity:	Human
Host:	Mouse
Isotype:	IgG1
Clonality:	Monoclonal
Immunogen:	Full length human recombinant protein of human FGG(NP_000500) produced in HEK293T cell.
Formulation:	PBS (pH 7.3) containing 1% BSA, 50% glycerol.
Concentration:	0.5 mg/ml
Purification:	Purified from mouse ascites fluids or tissue culture supernatant by affinity chromatography (protein A/G)
Conjugation:	HRP
Storage:	Store at -20°C as received.
Stability:	Stable for 12 months from date of receipt.
Predicted Protein Size:	46.4 kDa
Gene Name:	fibrinogen gamma chain
Database Link:	NP_000500 Entrez Gene 2266 Human P02679



[View online »](#)

Background:

The protein encoded by this gene is the gamma component of fibrinogen, a blood-borne glycoprotein comprised of three pairs of nonidentical polypeptide chains. Following vascular injury, fibrinogen is cleaved by thrombin to form fibrin which is the most abundant component of blood clots. In addition, various cleavage products of fibrinogen and fibrin regulate cell adhesion and spreading, display vasoconstrictor and chemotactic activities, and are mitogens for several cell types. Mutations in this gene lead to several disorders, including dysfibrinogenemia, hypofibrinogenemia and thrombophilia. Alternative splicing results in two transcript variants encoding different isoforms. [provided by RefSeq, Jul

Synonyms:

fibrinogen; fibrinogen gamma chain; gamma chain; gamma polypeptide

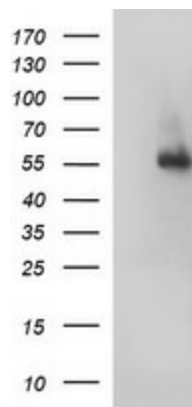
Protein Families:

Druggable Genome, Secreted Protein, Transmembrane

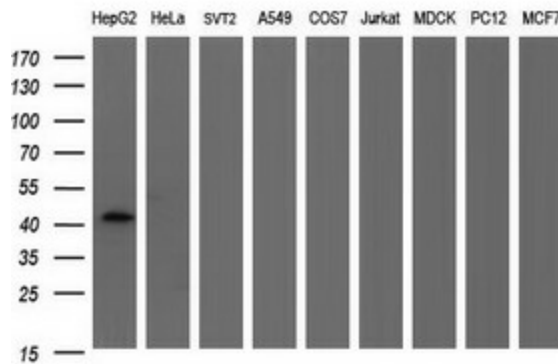
Protein Pathways:

Complement and coagulation cascades

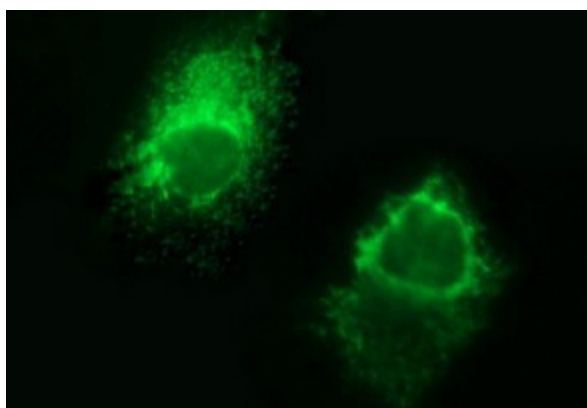
Product images:



HEK293T cells were transfected with the pCMV6-ENTRY control (Left lane) or pCMV6-ENTRY FGG ([RC202770], Right lane) cDNA for 48 hrs and lysed. Equivalent amounts of cell lysates (5 ug per lane) were separated by SDS-PAGE and immunoblotted with anti-FGG. Positive lysates [LY400173] (100ug) and [LC400173] (20ug) can be purchased separately from OriGene.



Western blot analysis of extracts (35ug) from 9 different cell lines by using anti-FGG monoclonal antibody (HepG2: human; HeLa: human; SVT2: mouse; A549: human; COS7: monkey; Jurkat: human; MDCK: canine; PC12: rat; MCF7: human) (1:400).



Immunofluorescent staining of COS7 cells, transiently transfected with pCMV6-ENTRY FGG ([RC202770]) by using Anti-FGG mouse monoclonal antibody ([TA507131]) at 1:100 dilution.