

Product datasheet for **TA507124M**

Collagen XV (COL15A1) Mouse Monoclonal Antibody [Clone ID: OTI1C5]

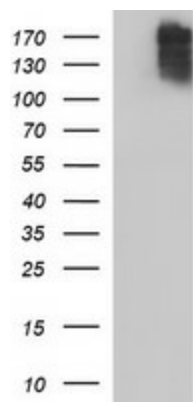
Product data:

| | |
|-------------------------|--|
| Product Type: | Primary Antibodies |
| Clone Name: | OTI1C5 |
| Applications: | IF, WB |
| Recommended Dilution: | WB 1:4000 |
| Reactivity: | Human |
| Host: | Mouse |
| Isotype: | IgG1 |
| Clonality: | Monoclonal |
| Immunogen: | Full length human recombinant protein of human COL15A1(NP_001846) produced in HEK293T cell. |
| Formulation: | PBS (pH 7.3) containing 1% BSA, 50% glycerol and 0.02% sodium azide. |
| Concentration: | 1 mg/ml |
| Purification: | Purified from mouse ascites fluids or tissue culture supernatant by affinity chromatography (protein A/G) |
| Conjugation: | Unconjugated |
| Storage: | Store at -20°C as received. |
| Stability: | Stable for 12 months from date of receipt. |
| Predicted Protein Size: | 138.9 kDa |
| Gene Name: | collagen type XV alpha 1 chain |
| Database Link: | NP_001846 Entrez Gene 1306 Human P39059 |
| Background: | This gene encodes the alpha chain of type XV collagen, a member of the FACIT collagen family (fibril-associated collagens with interrupted helices). Type XV collagen has a wide tissue distribution but the strongest expression is localized to basement membrane zones so it may function to adhere basement membranes to underlying connective tissue stroma. Mouse studies have shown that collagen XV deficiency is associated with muscle and microvessel deterioration. [provided by RefSeq, Jul 2008] |

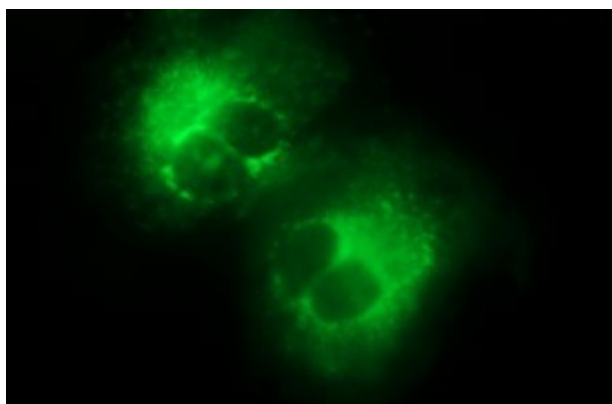

[View online »](#)

Synonyms: FLJ38566

Product images:



HEK293T cells were transfected with the pCMV6-ENTRY control (Cat# [PS100001], Left lane) or pCMV6-ENTRY COL15A1 (Cat# [RC215981], Right lane) cDNA for 48 hrs and lysed. Equivalent amounts of cell lysates (5 ug per lane) were separated by SDS-PAGE and immunoblotted with anti-COL15A1 (Cat# [TA507124]). Positive lysates [LY419713] (100ug) and [LC419713] (20ug) can be purchased separately from OriGene.



Anti-COL15A1 mouse monoclonal antibody ([TA507124]) immunofluorescent staining of COS7 cells transiently transfected by pCMV6-ENTRY COL15A1 ([RC215981]).