

## Product datasheet for **TA507087**

### PD-L1 (CD274) Mouse Monoclonal Antibody [Clone ID: OTI2C7]

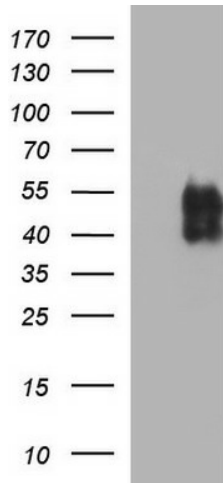
#### Product data:

Product Type:	Primary Antibodies
Clone Name:	OTI2C7
Applications:	ELISA, FC, IF, LMNX, WB
Recommended Dilution:	WB 1:200~2000, IF 1:100
Reactivity:	Human (Does not react with: Mouse)
Host:	Mouse
Isotype:	IgG1
Clonality:	Monoclonal
Immunogen:	Full length human recombinant protein of human CD274(NP_054862) produced in HEK293T cell.
Formulation:	PBS (pH 7.3) containing 1% BSA, 50% glycerol and 0.02% sodium azide.
Concentration:	1 mg/ml
Purification:	Purified from mouse ascites fluids or tissue culture supernatant by affinity chromatography (protein A/G)
Conjugation:	Unconjugated
Storage:	Store at -20°C as received.
Stability:	Stable for 12 months from date of receipt.
Predicted Protein Size:	31 kDa
Gene Name:	CD274 molecule
Database Link:	<a href="#">NP_054862</a> <a href="#">Entrez Gene 60533 Mouse</a> <a href="#">Entrez Gene 29126 Human</a> <a href="#">Q9NZQ7</a>
Synonyms:	B7-H; B7H1; PD-L1; PDCD1L1; PDCD1LG1; PDL1
Protein Families:	Druggable Genome, Transmembrane
Protein Pathways:	Cell adhesion molecules (CAMs)

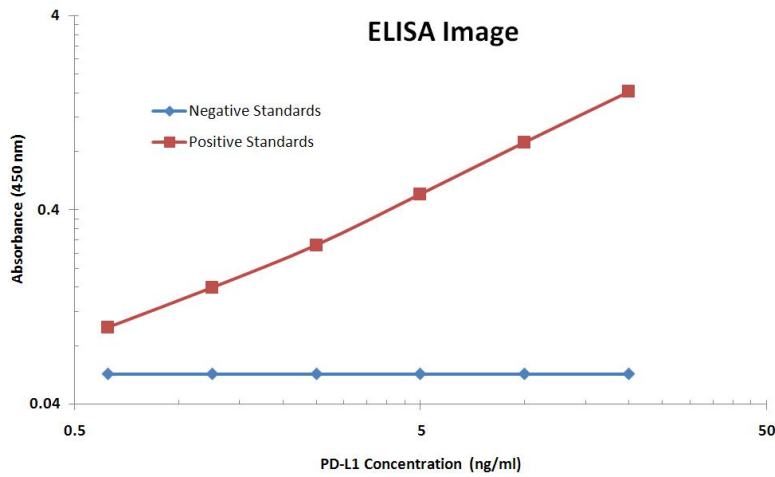


[View online »](#)

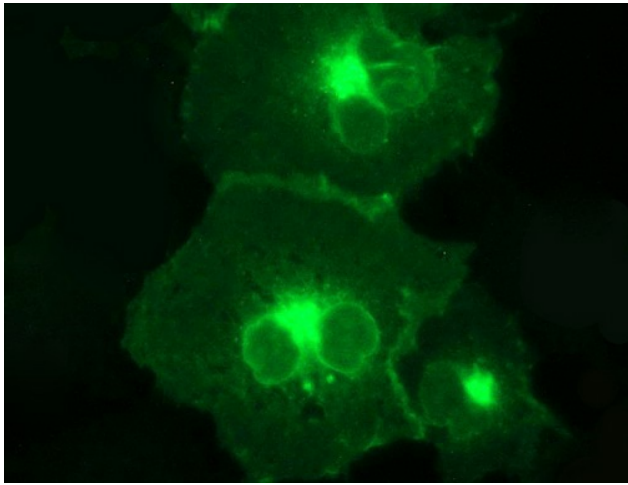
Product images:



HEK293T cells were transfected with the pCMV6-ENTRY control (Cat# [PS100001], Left lane) or pCMV6-ENTRY CD274 (Cat# [RC213071], Right lane) cDNA for 48 hrs and lysed. Equivalent amounts of cell lysates (5 ug per lane) were separated by SDS-PAGE and immunoblotted with anti-CD274(Cat# TA507087). Positive lysates [LY415473] (100ug) and [LC415473] (20ug) can be purchased separately from OriGene.



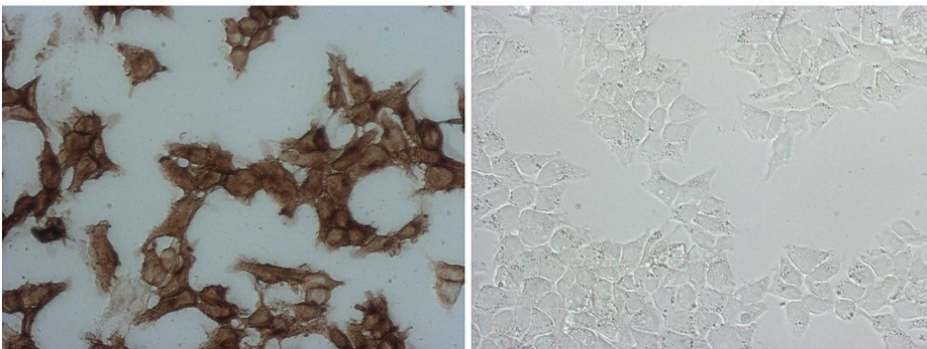
PD-L1 ELISA with 2C7 Capture (TA507087) and 9E12 Detection ([TA808771]) Antibodies. Substrate used: Recombinant Human PD-L1 ([TP700201])



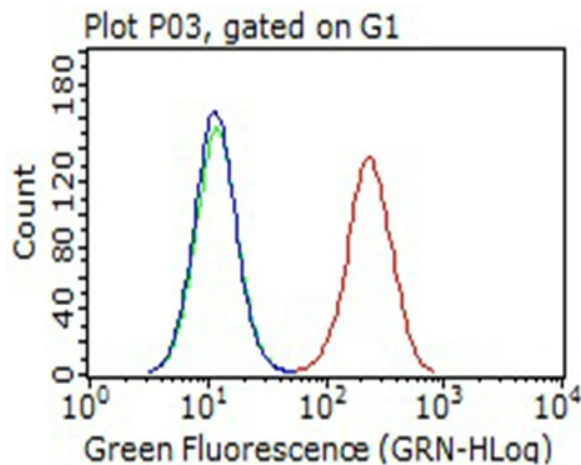
Anti-CD274 mouse monoclonal antibody (TA507087) immunofluorescent staining of COS7 cells transiently transfected by pCMV6-ENTRY CD274 ([RC213071]).

CD274

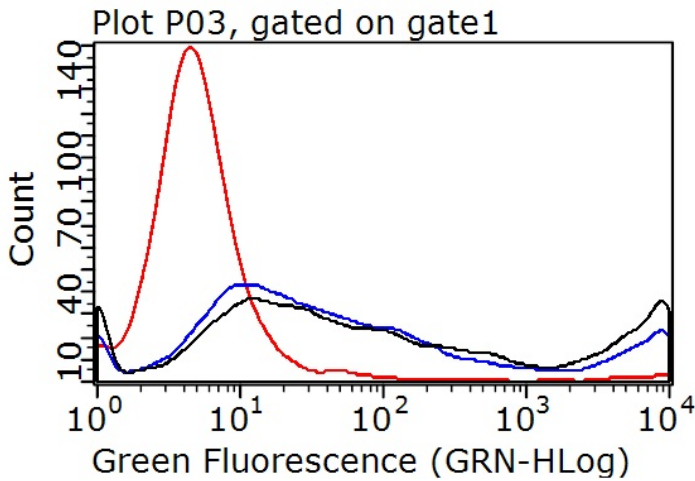
293T



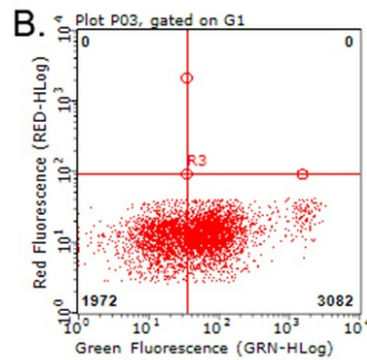
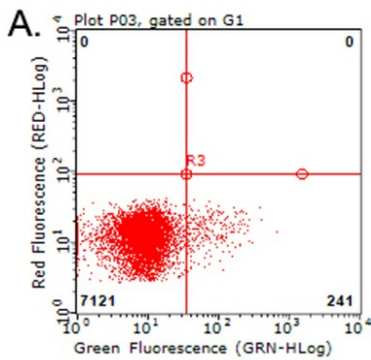
Immunocytochemistry staining of CD274 stable expression cells using anti-CD274 mouse monoclonal antibody (TA507087) (Left). The right is negative control (1:5000).



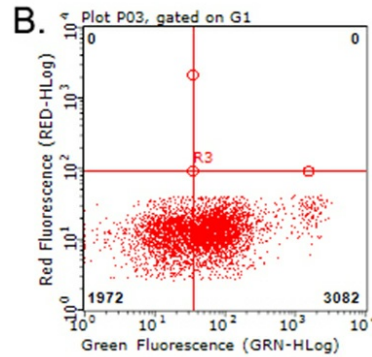
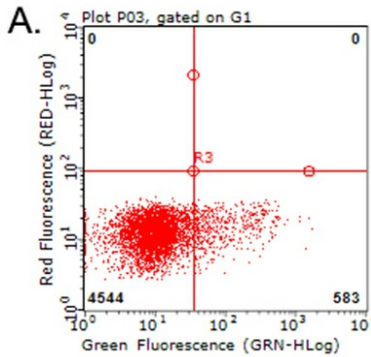
Flow cytometric Analysis of HCC78 cells, using anti-PDL1 antibody (TA507087), (Red), compared to isotype control, (green), and negative control (PBS), (Blue) (1:100).



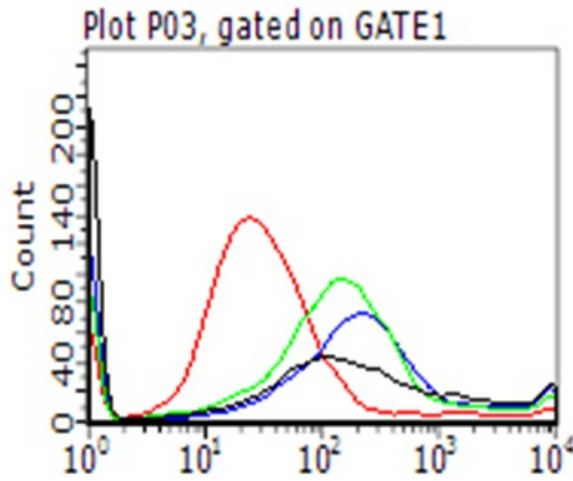
Detection of PDL1 neutralizing antibody using MACS column. PD1+ 293T cells ([RC210364]) linked with magnetic-beads and GFP+/PDL1+ 293T cells co-transfected with PDL1 ([RC213071]) and GFP ([PS100010]) plasmids were mixed together and incubated with PDL1 antibody TA507087 (red), mouse IgG isotype control (blue) or PBS (black). The mixed cells were pulled down using MACS column (Miltenyi Biotec) and analysed by Flow Cytometry. GFP+/PDL1+ cells would be collected if PD1/PDL1 interaction is not neutralized by the tested antibody.



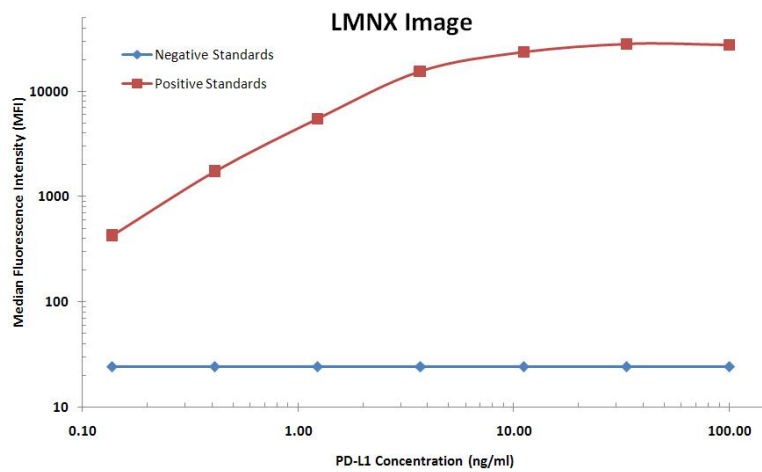
Flow cytometric analysis of living PBMCs treated with 10ug/ml PHA for 72h (Right)/untreated (Left) using anti-PDL1 antibody (TA507087) (1:100).



Flow cytometric analysis of living PBMCs treated with 10ug/ml PHA for 72h (Right) using anti-PDL1 antibody (TA507087). Cells incubated with a non-specific antibody (Left) were used as isotype control (1:100).



Detection of PDL1 neutralizing antibody using MACS column. GFP+/PDL1+ 293T cells (co-transfected with PDL1 and GFP plasmid ([RC213071], PS10010) were incubated with either PDL1 antibody TA507087 (red), non-specific antibody (green), isotype control (blue) or PBS (black) and then mixed with PD1+ 293T cells ([RC210364]) linked with magnetic-beads. The mixed cells were pulled down using MACS column (Miltenyi Biotec) and analysed by Flow Cytometry. GFP+/PDL1+ cells would not be collected if PD1/PDL1 interaction is neutralized by the tested antibody (1:50).



PD-L1 Luminex ELISA with 2C7 Capture (TA507087) and 9E12 Detection ([TA808771]) Antibodies. Substrate used: Recombinant Human PD-L1 ([TP700201])