

Product datasheet for **TA507022BM**

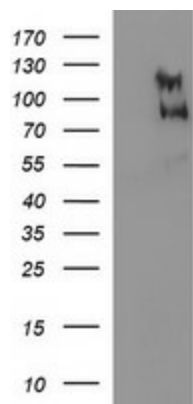
CEP68 Mouse Monoclonal Antibody (HRP conjugated) [Clone ID: OT11C6]

Product data:

Product Type:	Primary Antibodies
Clone Name:	OT11C6
Applications:	WB
Recommended Dilution:	WB 1:1000
Reactivity:	Human
Host:	Mouse
Isotype:	IgG1
Clonality:	Monoclonal
Immunogen:	Full length human recombinant protein of human CEP68(NP_055962) produced in HEK293T cell.
Formulation:	PBS (pH 7.3) containing 1% BSA, 50% glycerol.
Concentration:	0.5 mg/ml
Purification:	Purified from mouse ascites fluids or tissue culture supernatant by affinity chromatography (protein A/G)
Conjugation:	HRP
Storage:	Store at -20°C as received.
Stability:	Stable for 12 months from date of receipt.
Predicted Protein Size:	80.9 kDa
Gene Name:	centrosomal protein 68
Database Link:	NP_055962 Entrez Gene 23177 Human Q76N32
Synonyms:	KIAA0582



[View online »](#)

Product images:

HEK293T cells were transfected with the pCMV6-ENTRY control (Left lane) or pCMV6-ENTRY CEP68 ([RC200798], Right lane) cDNA for 48 hrs and lysed. Equivalent amounts of cell lysates (5 ug per lane) were separated by SDS-PAGE and immunoblotted with anti-CEP68. Positive lysates [LY414743] (100ug) and [LC414743] (20ug) can be purchased separately from OriGene.