

Product datasheet for **TA507021**

CEP68 Mouse Monoclonal Antibody [Clone ID: OTI5B4]

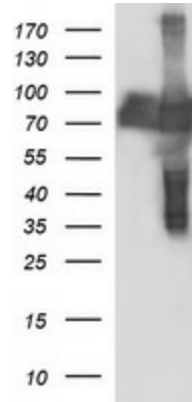
Product data:

| | |
|-------------------------|---|
| Product Type: | Primary Antibodies |
| Clone Name: | OTI5B4 |
| Applications: | IF, IHC, WB |
| Recommended Dilution: | WB 1:4000, IF 1:100 |
| Reactivity: | Human |
| Host: | Mouse |
| Isotype: | IgG1 |
| Clonality: | Monoclonal |
| Immunogen: | Full length human recombinant protein of human CEP68(NP_055962) produced in HEK293T cell. |
| Formulation: | PBS (pH 7.3) containing 1% BSA, 50% glycerol and 0.02% sodium azide. |
| Concentration: | 1 mg/ml |
| Purification: | Purified from mouse ascites fluids or tissue culture supernatant by affinity chromatography (protein A/G) |
| Conjugation: | Unconjugated |
| Storage: | Store at -20°C as received. |
| Stability: | Stable for 12 months from date of receipt. |
| Predicted Protein Size: | 80.9 kDa |
| Gene Name: | centrosomal protein 68 |
| Database Link: | NP_055962 Entrez Gene 23177 Human Q76N32 |
| Synonyms: | KIAA0582 |

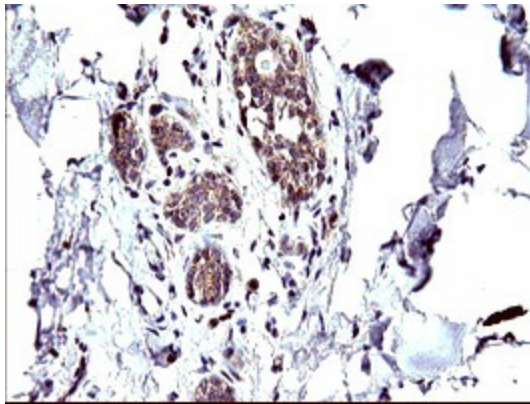


[View online »](#)

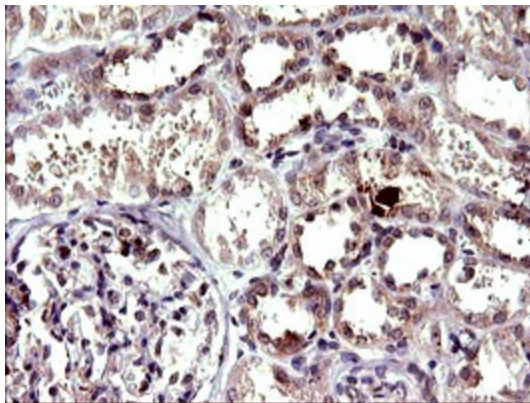
Product images:



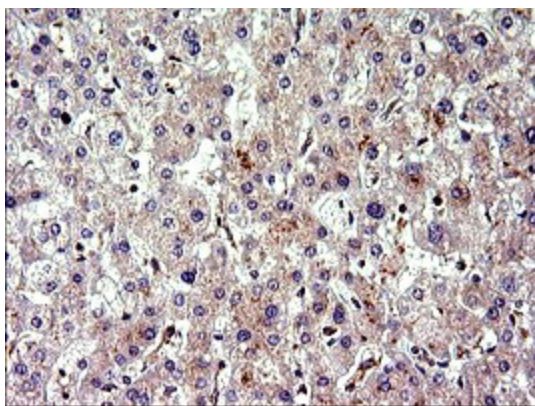
HEK293T cells were transfected with the pCMV6-ENTRY control (Cat# [PS100001], Left lane) or pCMV6-ENTRY CEP68 (Cat# [RC200798], Right lane) cDNA for 48 hrs and lysed. Equivalent amounts of cell lysates (5 ug per lane) were separated by SDS-PAGE and immunoblotted with anti-CEP68(Cat# TA507021). Positive lysates [LY414743] (100ug) and [LC414743] (20ug) can be purchased separately from OriGene.



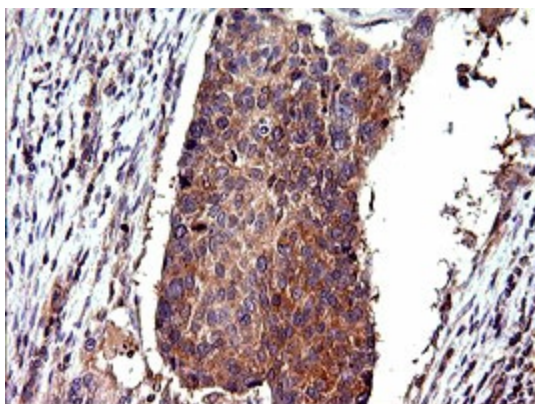
Immunohistochemical staining of paraffin-embedded Human breast tissue within the normal limits using anti-CEP68 mouse monoclonal antibody. (TA507021)



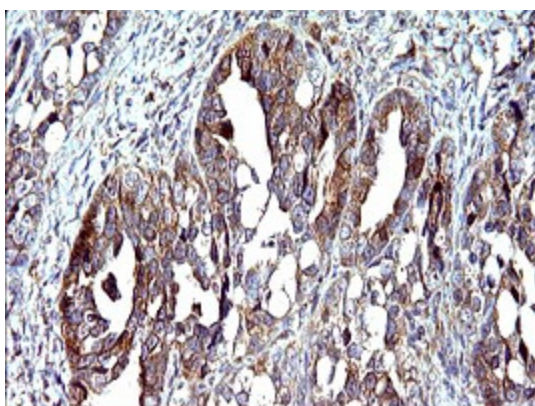
Immunohistochemical staining of paraffin-embedded Human Kidney tissue within the normal limits using anti-CEP68 mouse monoclonal antibody. (TA507021)



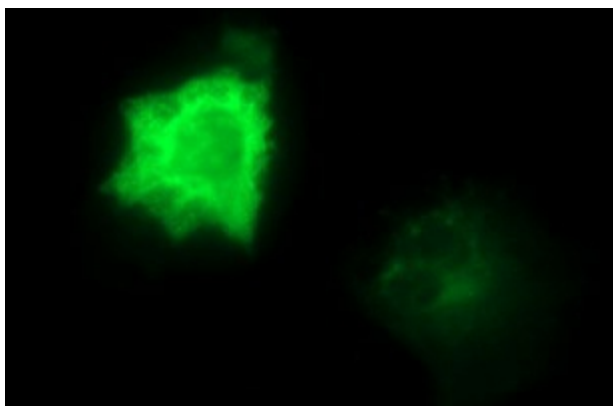
Immunohistochemical staining of paraffin-embedded Human liver tissue within the normal limits using anti-CEP68 mouse monoclonal antibody. (TA507021)



Immunohistochemical staining of paraffin-embedded Carcinoma of Human lung tissue using anti-CEP68 mouse monoclonal antibody. (TA507021)



Immunohistochemical staining of paraffin-embedded Adenocarcinoma of Human ovary tissue using anti-CEP68 mouse monoclonal antibody. (TA507021)



Anti-CEP68 mouse monoclonal antibody (TA507021) immunofluorescent staining of COS7 cells transiently transfected by pCMV6-ENTRY CEP68 ([RC200798]).