

Product datasheet for **TA507015AM**

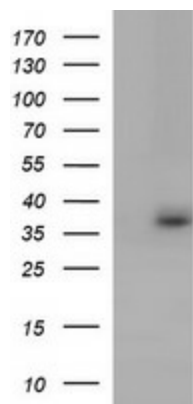
TOLLIP Mouse Monoclonal Antibody (Biotin conjugated) [Clone ID: OTI2E6]

Product data:

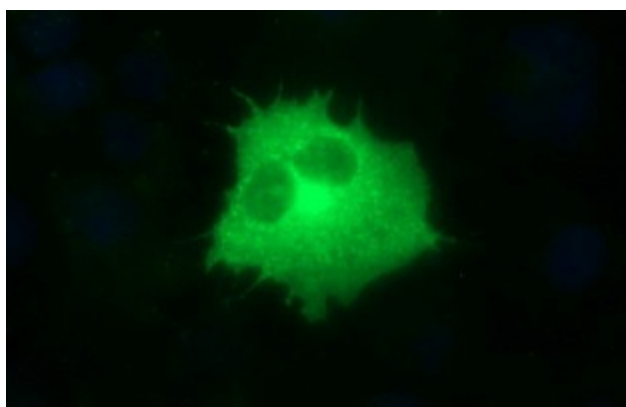
Product Type:	Primary Antibodies
Clone Name:	OTI2E6
Applications:	IF, WB
Recommended Dilution:	WB 1:2000, IF 1:100
Reactivity:	Human, Mouse, Rat
Host:	Mouse
Isotype:	IgG1
Clonality:	Monoclonal
Immunogen:	Full length human recombinant protein of human TOLLIP(NP_061882) produced in HEK293T cell.
Formulation:	PBS (pH 7.3) containing 1% BSA, 50% glycerol and 0.02% sodium azide.
Concentration:	0.5 mg/ml
Purification:	Purified from mouse ascites fluids or tissue culture supernatant by affinity chromatography (protein A/G)
Conjugation:	Biotin
Storage:	Store at -20°C as received.
Stability:	Stable for 12 months from date of receipt.
Predicted Protein Size:	30.1 kDa
Gene Name:	toll interacting protein
Database Link:	NP_061882 Entrez Gene 54473 Mouse Entrez Gene 361677 Rat Entrez Gene 54472 Human Q9H0E2
Synonyms:	IL-1RAcPIP
Protein Families:	Druggable Genome
Protein Pathways:	Toll-like receptor signaling pathway



[View online »](#)

Product images:

HEK293T cells were transfected with the pCMV6-ENTRY control (Left lane) or pCMV6-ENTRY TOLLIP ([RC200227], Right lane) cDNA for 48 hrs and lysed. Equivalent amounts of cell lysates (5 ug per lane) were separated by SDS-PAGE and immunoblotted with anti-TOLLIP. Positive lysates [LY402724] (100ug) and [LC402724] (20ug) can be purchased separately from OriGene.



Anti-TOLLIP mouse monoclonal antibody ([TA507015]) immunofluorescent staining of COS7 cells transiently transfected by pCMV6-ENTRY TOLLIP ([RC200227]).