

Product datasheet for **TA507012S**

Claudin 6 (CLDN6) Mouse Monoclonal Antibody [Clone ID: OTI3G3]

Product data:

Product Type:	Primary Antibodies
Clone Name:	OTI3G3
Applications:	IF, WB
Recommended Dilution:	WB 1:500, IF 1:100
Reactivity:	Human, Mouse, Rat
Host:	Mouse
Isotype:	IgG1
Clonality:	Monoclonal
Immunogen:	Full length human recombinant protein of human CLDN6(NP_067018) produced in HEK293T cell.
Formulation:	PBS (pH 7.3) containing 1% BSA, 50% glycerol and 0.02% sodium azide.
Concentration:	1 mg/ml
Purification:	Purified from mouse ascites fluids or tissue culture supernatant by affinity chromatography (protein A/G)
Conjugation:	Unconjugated
Storage:	Store at -20°C as received.
Stability:	Stable for 12 months from date of receipt.
Predicted Protein Size:	23.1 kDa
Gene Name:	claudin 6
Database Link:	NP_067018 Entrez Gene 54419 Mouse Entrez Gene 287098 Rat Entrez Gene 9074 Human P56747



[View online »](#)

Background:

Tight junctions represent one mode of cell-to-cell adhesion in epithelial or endothelial cell sheets, forming continuous seals around cells and serving as a physical barrier to prevent solutes and water from passing freely through the paracellular space. These junctions are comprised of sets of continuous networking strands in the outwardly facing cytoplasmic leaflet, with complementary grooves in the inwardly facing extracytoplasmic leaflet. This gene encodes a component of tight junction strands, which is a member of the claudin family. The protein is an integral membrane protein and is one of the entry cofactors for hepatitis C virus. The gene methylation may be involved in esophageal tumorigenesis. This gene is adjacent to another family member CLDN9 on chromosome 16. [provided by RefSeq, Aug 2010]

Synonyms:

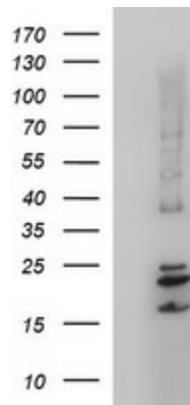
claudin 6; OTTHUMP00000159248

Protein Families:

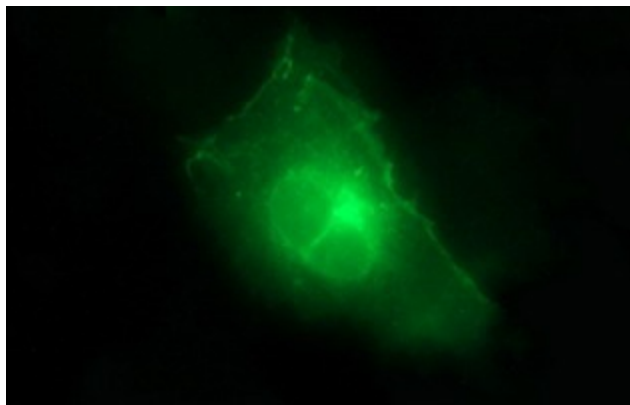
Transmembrane

Protein Pathways:

Cell adhesion molecules (CAMs), Leukocyte transendothelial migration, Tight junction

Product images:


HEK293T cells were transfected with the pCMV6-ENTRY control (Left lane) or pCMV6-ENTRY CLDN6 ([RC200744], Right lane) cDNA for 48 hrs and lysed. Equivalent amounts of cell lysates (5 ug per lane) were separated by SDS-PAGE and immunoblotted with anti-CLDN6. Positive lysates [LY412034] (100ug) and [LC412034] (20ug) can be purchased separately from OriGene.



Anti-CLDN6 mouse monoclonal antibody ([TA507012]) immunofluorescent staining of COS7 cells transiently transfected by pCMV6-ENTRY CLDN6 ([RC200744]).