

## Product datasheet for **TA507004BM**

### **BORCS5 Mouse Monoclonal Antibody (HRP conjugated) [Clone ID: OTI1E1]**

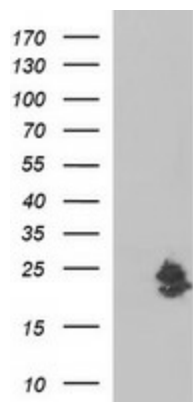
#### **Product data:**

Product Type:	Primary Antibodies
Clone Name:	OTI1E1
Applications:	IF, WB
Recommended Dilution:	WB 1:4000, IF 1:100
Reactivity:	Human
Host:	Mouse
Isotype:	IgG2a
Clonality:	Monoclonal
Immunogen:	Full length human recombinant protein of human LOH12CR1(NP_477517) produced in HEK293T cell.
Formulation:	PBS (pH 7.3) containing 1% BSA, 50% glycerol.
Concentration:	0.5 mg/ml
Purification:	Purified from mouse ascites fluids or tissue culture supernatant by affinity chromatography (protein A/G)
Conjugation:	HRP
Storage:	Store at -20°C as received.
Stability:	Stable for 12 months from date of receipt.
Predicted Protein Size:	22 kDa
Gene Name:	BLOC-1 related complex subunit 5
Database Link:	<a href="#">NP_477517</a> <a href="#">Entrez Gene 118426 Human</a> <a href="#">Q969J3</a>
Synonyms:	LOH1CR12

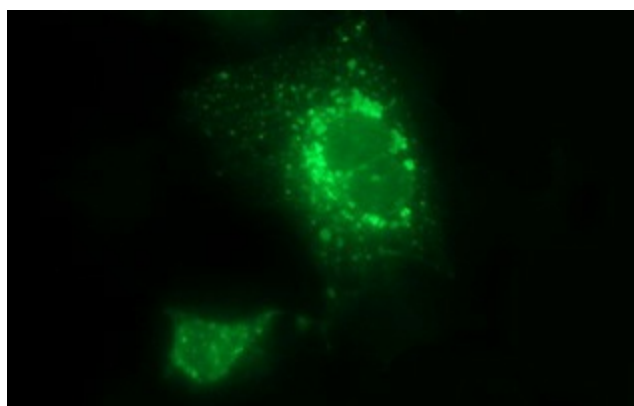


[View online »](#)

## Product images:



HEK293T cells were transfected with the pCMV6-ENTRY control (Cat# [PS100001], Left lane) or pCMV6-ENTRY LOH12CR1 (Cat# [RC203844], Right lane) cDNA for 48 hrs and lysed. Equivalent amounts of cell lysates (5 ug per lane) were separated by SDS-PAGE and immunoblotted with anti-LOH12CR1 (Cat# [TA507004]). Positive lysates [LY409223] (100ug) and [LC409223] (20ug) can be purchased separately from OriGene.



Anti-LOH12CR1 mouse monoclonal antibody ([TA507004]) immunofluorescent staining of COS7 cells transiently transfected by pCMV6-ENTRY LOH12CR1 ([RC203844]).