

Product datasheet for **TA506986M**

MADCAM1 Mouse Monoclonal Antibody [Clone ID: OT1E1]

Product data:

Product Type:	Primary Antibodies
Clone Name:	OT1E1
Applications:	IF, WB
Recommended Dilution:	WB 1:4000, IF 1:100
Reactivity:	Human
Host:	Mouse
Isotype:	IgG1
Clonality:	Monoclonal
Immunogen:	Full length human recombinant protein of human MADCAM1(NP_570116) produced in HEK293T cell.
Formulation:	PBS (pH 7.3) containing 1% BSA, 50% glycerol and 0.02% sodium azide.
Concentration:	1 mg/ml
Purification:	Purified from mouse ascites fluids or tissue culture supernatant by affinity chromatography (protein A/G)
Conjugation:	Unconjugated
Storage:	Store at -20°C as received.
Stability:	Stable for 12 months from date of receipt.
Predicted Protein Size:	38.3 kDa
Gene Name:	mucosal vascular addressin cell adhesion molecule 1
Database Link:	NP_570116 Entrez Gene 8174 Human Q13477



[View online »](#)

Background:

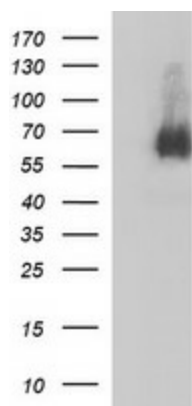
The protein encoded by this gene is an endothelial cell adhesion molecule that interacts preferentially with the leukocyte beta7 integrin LPAM-1 (alpha4beta7), L-selectin, and VLA-4 (alpha4beta1) on myeloid cells to direct leukocytes into mucosal and inflamed tissues. It is a member of the immunoglobulin family and is similar to ICAM1 and VCAM1. At least seven alternatively spliced transcripts encoding different protein isoforms have been found for this gene, but the full-length nature of some variants has not been determined. [provided by RefSeq, Jul 2008]

Synonyms:

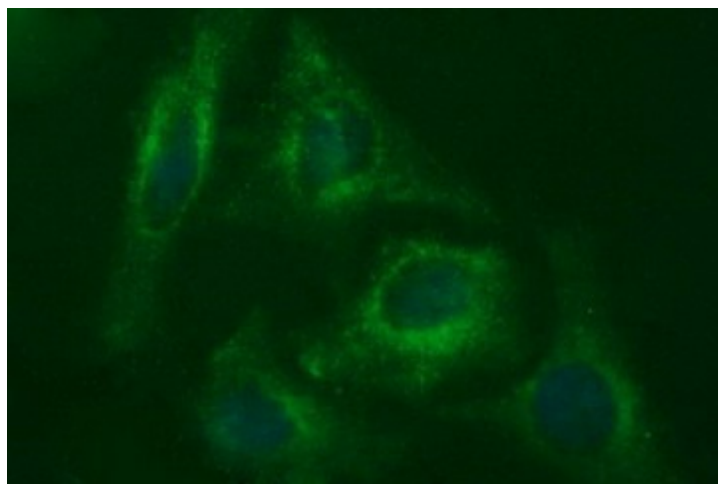
MACAM1

Protein Pathways:

Cell adhesion molecules (CAMs)

Product images:


HEK293T cells were transfected with the pCMV6-ENTRY control (Left lane) or pCMV6-ENTRY MADCAM1 ([RC219060], Right lane) cDNA for 48 hrs and lysed. Equivalent amounts of cell lysates (5 ug per lane) were separated by SDS-PAGE and immunoblotted with anti-MADCAM1. Positive lysates [LY408927] (100ug) and [LC408927] (20ug) can be purchased separately from OriGene.



Immunofluorescent staining of HeLa cells using anti-MADCAM1 mouse monoclonal antibody ([TA506986]) at 1:100 dilution.