

## Product datasheet for **TA506980S**

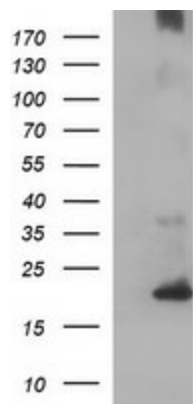
### **CYBC1 Mouse Monoclonal Antibody [Clone ID: OTI3E11]**

#### **Product data:**

Product Type:	Primary Antibodies
Clone Name:	OTI3E11
Applications:	WB
Recommended Dilution:	WB 1:500
Reactivity:	Human
Host:	Mouse
Isotype:	IgG1
Clonality:	Monoclonal
Immunogen:	Full length human recombinant protein of human C17orf62(NP_001028218) produced in HEK293T cell.
Formulation:	PBS (pH 7.3) containing 1% BSA, 50% glycerol and 0.02% sodium azide.
Concentration:	1 mg/ml
Purification:	Purified from mouse ascites fluids or tissue culture supernatant by affinity chromatography (protein A/G)
Conjugation:	Unconjugated
Storage:	Store at -20°C as received.
Stability:	Stable for 12 months from date of receipt.
Predicted Protein Size:	20.6 kDa
Gene Name:	cytochrome b-245 chaperone 1
Database Link:	<a href="#">NP_001028218</a> <a href="#">Entrez Gene 79415 Human</a> <a href="#">Q9BQA9</a>
Synonyms:	FLJ00406; FLJ90469; MGC4368
Protein Families:	Transmembrane



[View online »](#)

**Product images:**

HEK293T cells were transfected with the pCMV6-ENTRY control (Left lane) or pCMV6-ENTRY C17orf62 ([RC200883], Right lane) cDNA for 48 hrs and lysed. Equivalent amounts of cell lysates (5 ug per lane) were separated by SDS-PAGE and immunoblotted with anti-C17orf62. Positive lysates [LY422350] (100ug) and [LC422350] (20ug) can be purchased separately from OriGene.