

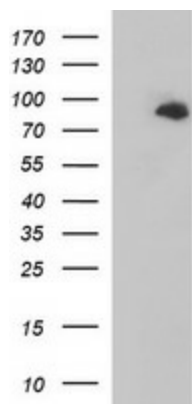
## Product datasheet for **TA506965M**

### Junctophilin 2 (JPH2) Mouse Monoclonal Antibody [Clone ID: OTI2E5]

#### Product data:

Product Type:	Primary Antibodies
Clone Name:	OTI2E5
Applications:	WB
Recommended Dilution:	WB 1:4000
Reactivity:	Human, Mouse, Rat
Host:	Mouse
Isotype:	IgG2a
Clonality:	Monoclonal
Immunogen:	Full length human recombinant protein of human JPH2(NP_065166) produced in HEK293T cell.
Formulation:	PBS (pH 7.3) containing 1% BSA, 50% glycerol and 0.02% sodium azide.
Concentration:	1 mg/ml
Purification:	Purified from mouse ascites fluids or tissue culture supernatant by affinity chromatography (protein A/G)
Conjugation:	Unconjugated
Storage:	Store at -20°C as received.
Stability:	Stable for 12 months from date of receipt.
Predicted Protein Size:	74 kDa
Gene Name:	junctophilin 2
Database Link:	<a href="#">NP_065166</a> <a href="#">Entrez Gene 59091 Mouse</a> <a href="#">Entrez Gene 296345 Rat</a> <a href="#">Entrez Gene 57158 Human</a> <a href="#">Q9BR39</a>
Synonyms:	CMH17; JP-2; JP2
Protein Families:	Transmembrane


[View online »](#)

**Product images:**


HEK293T cells were transfected with the pCMV6-ENTRY control (Left lane) or pCMV6-ENTRY JPH2 ([RC219661], Right lane) cDNA for 48 hrs and lysed. Equivalent amounts of cell lysates (5 ug per lane) were separated by SDS-PAGE and immunoblotted with anti-JPH2. Positive lysates [LY412483] (100ug) and [LC412483] (20ug) can be purchased separately from OriGene.