

Product datasheet for **TA506965BM**

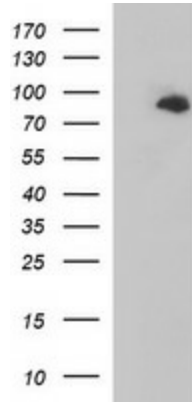
Junctophilin 2 (JPH2) Mouse Monoclonal Antibody (HRP conjugated) [Clone ID: OTI2E5]

Product data:

Product Type:	Primary Antibodies
Clone Name:	OTI2E5
Applications:	WB
Recommended Dilution:	WB 1:4000
Reactivity:	Human, Mouse, Rat
Host:	Mouse
Isotype:	IgG2a
Clonality:	Monoclonal
Immunogen:	Full length human recombinant protein of human JPH2(NP_065166) produced in HEK293T cell.
Formulation:	PBS (pH 7.3) containing 1% BSA, 50% glycerol.
Concentration:	0.5 mg/ml
Purification:	Purified from mouse ascites fluids or tissue culture supernatant by affinity chromatography (protein A/G)
Conjugation:	HRP
Storage:	Store at -20°C as received.
Stability:	Stable for 12 months from date of receipt.
Predicted Protein Size:	74 kDa
Gene Name:	junctophilin 2
Database Link:	NP_065166 Entrez Gene 59091 Mouse Entrez Gene 296345 Rat Entrez Gene 57158 Human Q9BR39
Synonyms:	CMH17; JP-2; JP2
Protein Families:	Transmembrane



[View online »](#)

Product images:

HEK293T cells were transfected with the pCMV6-ENTRY control (Left lane) or pCMV6-ENTRY JPH2 ([RC219661], Right lane) cDNA for 48 hrs and lysed. Equivalent amounts of cell lysates (5 ug per lane) were separated by SDS-PAGE and immunoblotted with anti-JPH2. Positive lysates [LY412483] (100ug) and [LC412483] (20ug) can be purchased separately from OriGene.