

## Product datasheet for **TA506945S**

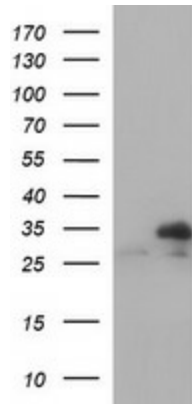
### **TXNDC (TMX1) Mouse Monoclonal Antibody [Clone ID: OTI1C1]**

#### **Product data:**

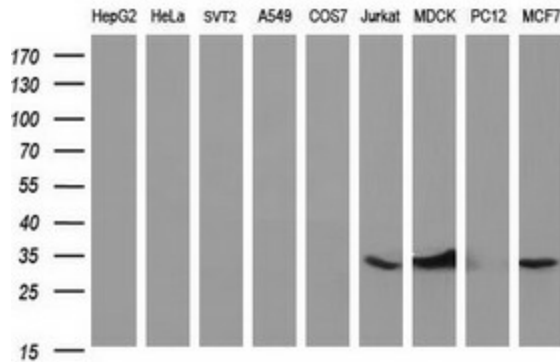
<b>Product Type:</b>	Primary Antibodies
<b>Clone Name:</b>	OTI1C1
<b>Applications:</b>	WB
<b>Recommended Dilution:</b>	WB 1:4000
<b>Reactivity:</b>	Human
<b>Host:</b>	Mouse
<b>Isotype:</b>	IgG1
<b>Clonality:</b>	Monoclonal
<b>Immunogen:</b>	Full length human recombinant protein of human TMX1(NP_110382) produced in HEK293T cell.
<b>Formulation:</b>	PBS (pH 7.3) containing 1% BSA, 50% glycerol and 0.02% sodium azide.
<b>Concentration:</b>	1 mg/ml
<b>Purification:</b>	Purified from mouse ascites fluids or tissue culture supernatant by affinity chromatography (protein A/G)
<b>Conjugation:</b>	Unconjugated
<b>Storage:</b>	Store at -20°C as received.
<b>Stability:</b>	Stable for 12 months from date of receipt.
<b>Predicted Protein Size:</b>	31.6 kDa
<b>Gene Name:</b>	thioredoxin related transmembrane protein 1
<b>Database Link:</b>	<a href="#">NP_110382</a> <a href="#">Entrez Gene 81542 Human</a> <a href="#">Q9H3N1</a>
<b>Synonyms:</b>	PDIA11; TMX; TXNDC; TXNDC1
<b>Protein Families:</b>	Druggable Genome, Transcription Factors, Transmembrane



[View online »](#)

**Product images:**


HEK293T cells were transfected with the pCMV6-ENTRY control (Left lane) or pCMV6-ENTRY TMX1 ([RC206187], Right lane) cDNA for 48 hrs and lysed. Equivalent amounts of cell lysates (5 ug per lane) were separated by SDS-PAGE and immunoblotted with anti-TMX1. Positive lysates [LY410692] (100ug) and [LC410692] (20ug) can be purchased separately from OriGene.



Western blot analysis of extracts (35ug) from 9 different cell lines by using anti-TMX1 monoclonal antibody (HepG2: human; HeLa: human; SVT2: mouse; A549: human; COS7: monkey; Jurkat: human; MDCK: canine; PC12: rat; MCF7: human). Dilution: 1:400