

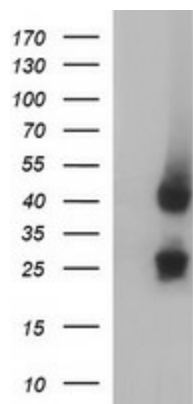
## Product datasheet for **TA506943M**

### MFAP3 Mouse Monoclonal Antibody [Clone ID: OTI1G1]

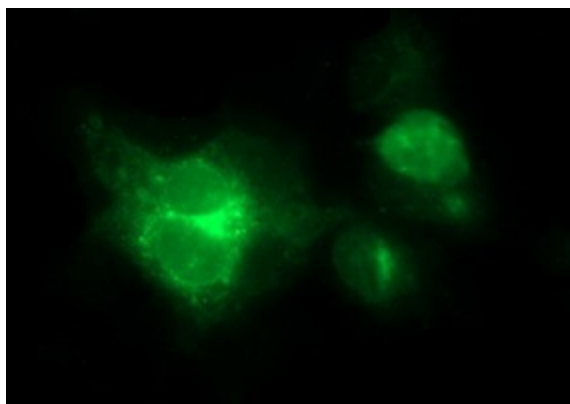
#### Product data:

Product Type:	Primary Antibodies
Clone Name:	OTI1G1
Applications:	IF, WB
Recommended Dilution:	WB 1:4000, IF 1:100
Reactivity:	Human
Host:	Mouse
Isotype:	IgG1
Clonality:	Monoclonal
Immunogen:	Full length human recombinant protein of human MFAP3(NP_005918) produced in HEK293T cell.
Formulation:	PBS (pH 7.3) containing 1% BSA, 50% glycerol and 0.02% sodium azide.
Concentration:	1 mg/ml
Purification:	Purified from mouse ascites fluids or tissue culture supernatant by affinity chromatography (protein A/G)
Conjugation:	Unconjugated
Storage:	Store at -20°C as received.
Stability:	Stable for 12 months from date of receipt.
Predicted Protein Size:	40 kDa
Gene Name:	microfibril associated protein 3
Database Link:	<a href="#">NP_005918</a> <a href="#">Entrez Gene 4238 Human</a> <a href="#">P55082</a>
Synonyms:	DKFZp586F0219
Protein Families:	Transmembrane

[View online »](#)

**Product images:**


HEK293T cells were transfected with the pCMV6-ENTRY control (Left lane) or pCMV6-ENTRY MFAP3 ([RC204656], Right lane) cDNA for 48 hrs and lysed. Equivalent amounts of cell lysates (5 ug per lane) were separated by SDS-PAGE and immunoblotted with anti-MFAP3. Positive lysates [LY416962] (100ug) and [LC416962] (20ug) can be purchased separately from OriGene.



Anti-MFAP3 mouse monoclonal antibody ([TA506943]) immunofluorescent staining of COS7 cells transiently transfected by pCMV6-ENTRY MFAP3 ([RC204656]).