

Product datasheet for **TA506908BM**

HRASLS3 (PLA2G16) Mouse Monoclonal Antibody (HRP conjugated) [Clone ID: OTI1A5]

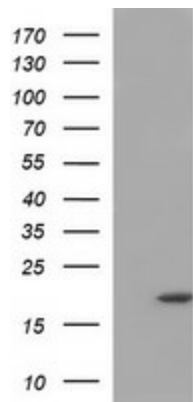
Product data:

Product Type:	Primary Antibodies
Clone Name:	OTI1A5
Applications:	IF, IHC, WB
Recommended Dilution:	WB 1:4000, IHC 1:150, IF 1:100
Reactivity:	Human
Host:	Mouse
Isotype:	IgG1
Clonality:	Monoclonal
Immunogen:	Full length human recombinant protein of human PLA2G16(NP_009000) produced in HEK293T cell.
Formulation:	PBS (pH 7.3) containing 1% BSA, 50% glycerol.
Concentration:	0.5 mg/ml
Purification:	Purified from mouse ascites fluids or tissue culture supernatant by affinity chromatography (protein A/G)
Conjugation:	HRP
Storage:	Store at -20°C as received.
Stability:	Stable for 12 months from date of receipt.
Predicted Protein Size:	17.8 kDa
Gene Name:	phospholipase A and acyltransferase 3
Database Link:	NP_009000 Entrez Gene 11145 Human P53816
Synonyms:	AdPLA; H-REV107-1; HRASLS3; HREV107; HREV107-1; HREV107-3; HRSL3
Protein Families:	Druggable Genome, Transmembrane

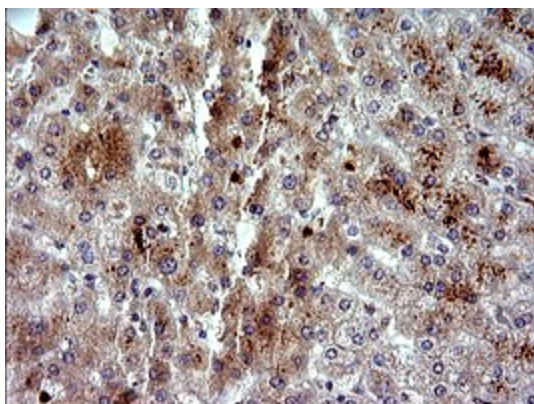


[View online »](#)

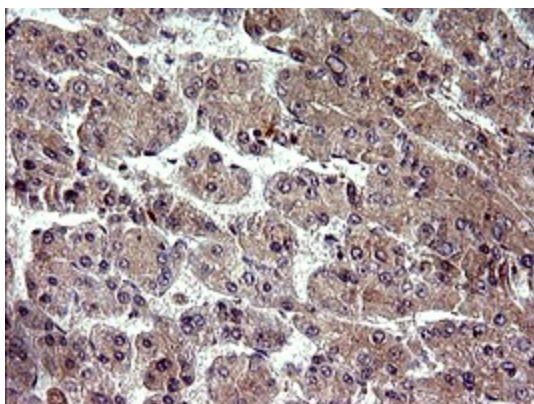
Product images:



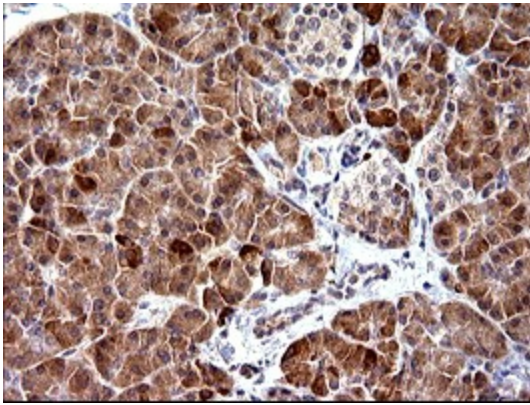
HEK293T cells were transfected with the pCMV6-ENTRY control (Cat# [PS100001], Left lane) or pCMV6-ENTRY PLA2G16 (Cat# [RC200242], Right lane) cDNA for 48 hrs and lysed. Equivalent amounts of cell lysates (5 ug per lane) were separated by SDS-PAGE and immunoblotted with anti-PLA2G16(Cat# [TA506908]). Positive lysates [LY416202] (100ug) and [LC416202] (20ug) can be purchased separately from OriGene.



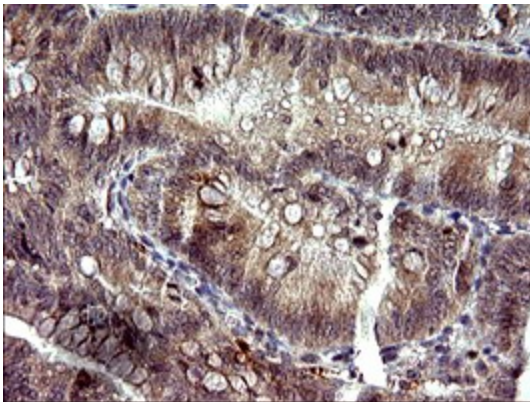
Immunohistochemical staining of paraffin-embedded Human liver tissue within the normal limits using anti-PLA2G16 mouse monoclonal antibody. (Heat-induced epitope retrieval by 10mM citric buffer, pH6.0, 120°C for 3min, [TA506908])



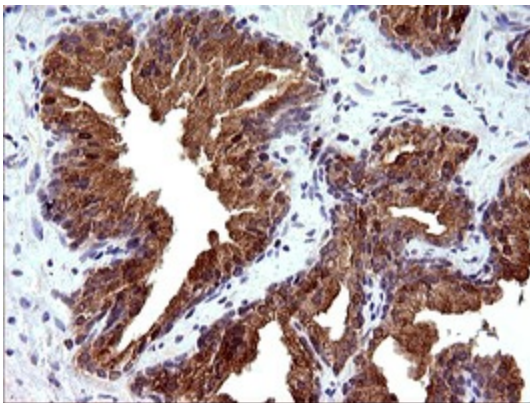
Immunohistochemical staining of paraffin-embedded Carcinoma of Human liver tissue using anti-PLA2G16 mouse monoclonal antibody. (Heat-induced epitope retrieval by 10mM citric buffer, pH6.0, 120°C for 3min, [TA506908])



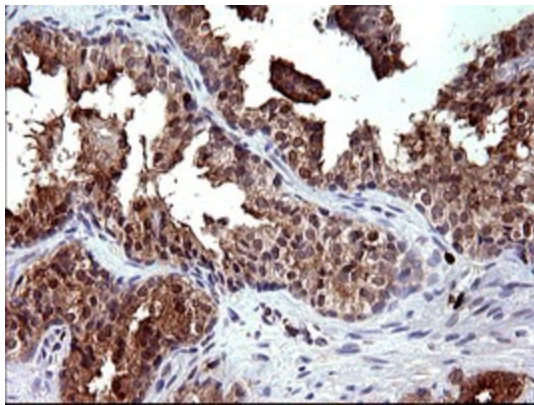
Immunohistochemical staining of paraffin-embedded Human pancreas tissue within the normal limits using anti-PLA2G16 mouse monoclonal antibody. (Heat-induced epitope retrieval by 10mM citric buffer, pH6.0, 120°C for 3min, [TA506908])



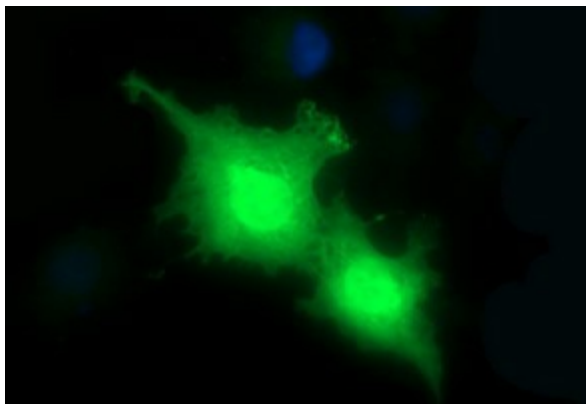
Immunohistochemical staining of paraffin-embedded Carcinoma of Human pancreas tissue using anti-PLA2G16 mouse monoclonal antibody. (Heat-induced epitope retrieval by 10mM citric buffer, pH6.0, 120°C for 3min, [TA506908])



Immunohistochemical staining of paraffin-embedded Human prostate tissue within the normal limits using anti-PLA2G16 mouse monoclonal antibody. (Heat-induced epitope retrieval by 10mM citric buffer, pH6.0, 120°C for 3min, [TA506908])



Immunohistochemical staining of paraffin-embedded Carcinoma of Human prostate tissue using anti-PLA2G16 mouse monoclonal antibody. (Heat-induced epitope retrieval by 10mM citric buffer, pH6.0, 120°C for 3min, [TA506908])



Anti-PLA2G16 mouse monoclonal antibody ([TA506908]) immunofluorescent staining of COS7 cells transiently transfected by pCMV6-ENTRY PLA2G16 ([RC200242]).