

Product datasheet for **TA506880AM**

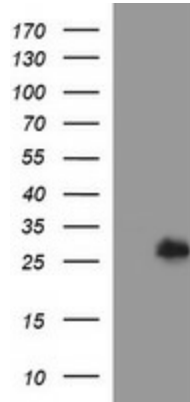
DTD1 Mouse Monoclonal Antibody (Biotin conjugated) [Clone ID: OTI1E1]

Product data:

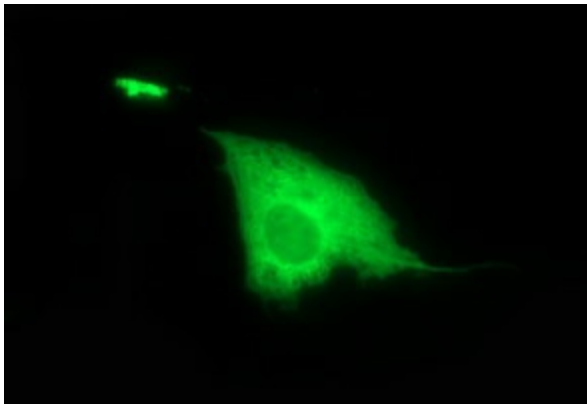
| | |
|--------------------------------|---|
| Product Type: | Primary Antibodies |
| Clone Name: | OTI1E1 |
| Applications: | IF, WB |
| Recommended Dilution: | WB 1:4000, IF 1:100 |
| Reactivity: | Human, Mouse, Rat |
| Host: | Mouse |
| Isotype: | IgG1 |
| Clonality: | Monoclonal |
| Immunogen: | Full length human recombinant protein of human DTD1(NP_543010) produced in HEK293T cell. |
| Formulation: | PBS (pH 7.3) containing 1% BSA, 50% glycerol and 0.02% sodium azide. |
| Concentration: | 0.5 mg/ml |
| Purification: | Purified from mouse ascites fluids or tissue culture supernatant by affinity chromatography (protein A/G) |
| Conjugation: | Biotin |
| Storage: | Store at -20°C as received. |
| Stability: | Stable for 12 months from date of receipt. |
| Predicted Protein Size: | 23.2 kDa |
| Gene Name: | D-aminoacyl-tRNA deacylase 1 |
| Database Link: | NP_543010 Entrez Gene 66044 Mouse Entrez Gene 362227 Rat Entrez Gene 92675 Human Q8TEA8 |
| Synonyms: | C20orf88; DUE-B; DUEB; HARS2; pqn-68 |



[View online »](#)

Product images:

HEK293T cells were transfected with the pCMV6-ENTRY control (Cat# [PS100001], Left lane) or pCMV6-ENTRY DTD1 (Cat# [RC207233], Right lane) cDNA for 48 hrs and lysed. Equivalent amounts of cell lysates (5 ug per lane) were separated by SDS-PAGE and immunoblotted with anti-DTD1 (Cat# [TA506880]). Positive lysates [LY409024] (100ug) and [LC409024] (20ug) can be purchased separately from OriGene.



Anti-DTD1 mouse monoclonal antibody ([TA506880]) immunofluorescent staining of COS7 cells transiently transfected by pCMV6-ENTRY DTD1 ([RC207233]).