

## Product datasheet for **TA506878AM**

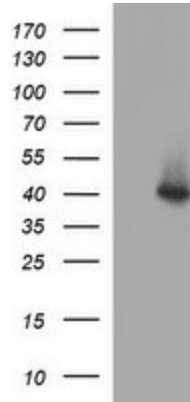
### **SERPINB3 Mouse Monoclonal Antibody (Biotin conjugated) [Clone ID: OTI1A12]**

#### **Product data:**

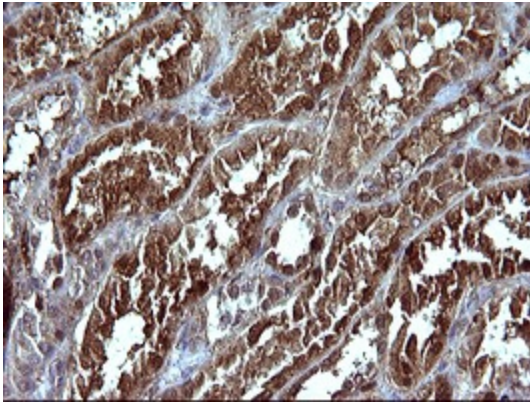
|                         |   |
|-------------------------|---|
| Product Type:           | Primary Antibodies  |
| Clone Name:             | OTI1A12   |
| Applications:           | IHC, WB   |
| Recommended Dilution:   | WB 1:4000, IHC 1:150  |
| Reactivity:             | Human   |
| Host:                   | Mouse   |
| Isotype:                | IgG1  |
| Clonality:              | Monoclonal  |
| Immunogen:              | Full length human recombinant protein of human SERPINB3(NP_008850) produced in HEK293T cell.              |
| Formulation:            | PBS (pH 7.3) containing 1% BSA, 50% glycerol and 0.02% sodium azide.                                      |
| Concentration:          | 0.5 mg/ml   |
| Purification:           | Purified from mouse ascites fluids or tissue culture supernatant by affinity chromatography (protein A/G) |
| Conjugation:            | Biotin  |
| Storage:                | Store at -20°C as received.   |
| Stability:              | Stable for 12 months from date of receipt.  |
| Predicted Protein Size: | 44.4 kDa  |
| Gene Name:              | serpin family B member 3  |
| Database Link:          | <a href="#">NP_008850</a><br><a href="#">Entrez Gene 6317 Human P29508</a>                                |
| Synonyms:               | HsT1196; SCC; SCCA-1; SCCA-PD; SCCA1; SSCA1; T4-A   |
| Protein Families:       | Druggable Genome, Secreted Protein  |



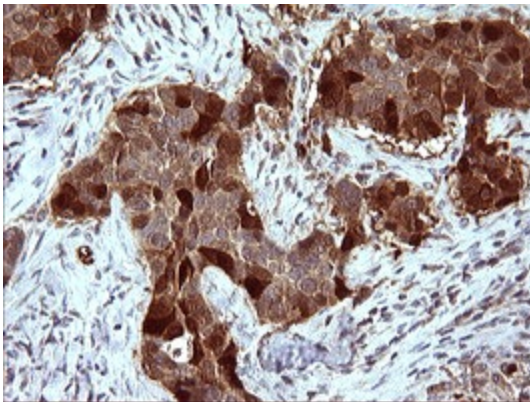
[View online »](#)

**Product images:**

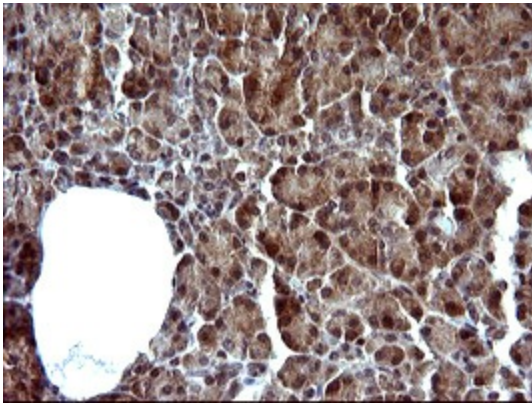
HEK293T cells were transfected with the pCMV6-ENTRY control (Cat# [PS100001], Left lane) or pCMV6-ENTRY SERPINB3 (Cat# [RC202683], Right lane) cDNA for 48 hrs and lysed. Equivalent amounts of cell lysates (5 ug per lane) were separated by SDS-PAGE and immunoblotted with anti-SERPINB3 (Cat# [TA506878]). Positive lysates [LY416321] (100ug) and [LC416321] (20ug) can be purchased separately from OriGene.



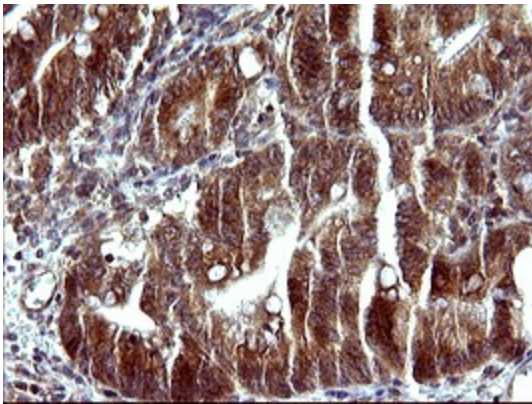
Immunohistochemical staining of paraffin-embedded Human Kidney tissue within the normal limits using anti-SERPINB3 mouse monoclonal antibody. (Heat-induced epitope retrieval by 10mM citric buffer, pH6.0, 120°C for 3min, [TA506878])



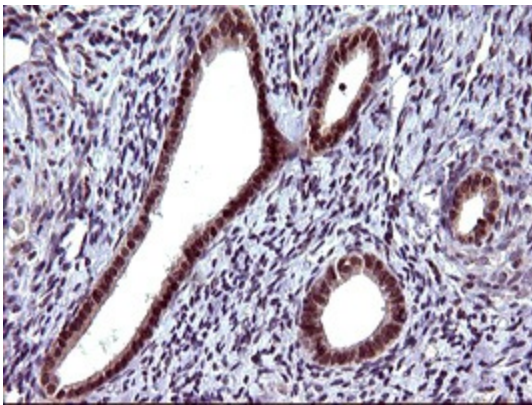
Immunohistochemical staining of paraffin-embedded Carcinoma of Human lung tissue using anti-SERPINB3 mouse monoclonal antibody. (Heat-induced epitope retrieval by 10mM citric buffer, pH6.0, 120°C for 3min, [TA506878])



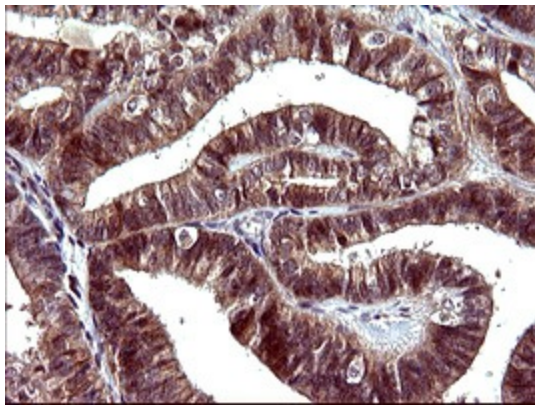
Immunohistochemical staining of paraffin-embedded Human pancreas tissue within the normal limits using anti-SERPINB3 mouse monoclonal antibody. (Heat-induced epitope retrieval by 10mM citric buffer, pH6.0, 120°C for 3min, [TA506878])



Immunohistochemical staining of paraffin-embedded Carcinoma of Human pancreas tissue using anti-SERPINB3 mouse monoclonal antibody. (Heat-induced epitope retrieval by 10mM citric buffer, pH6.0, 120°C for 3min, [TA506878])



Immunohistochemical staining of paraffin-embedded Human endometrium tissue within the normal limits using anti-SERPINB3 mouse monoclonal antibody. (Heat-induced epitope retrieval by 10mM citric buffer, pH6.0, 120°C for 3min, [TA506878])



Immunohistochemical staining of paraffin-embedded Adenocarcinoma of Human endometrium tissue using anti-SERPINB3 mouse monoclonal antibody. (Heat-induced epitope retrieval by 10mM citric buffer, pH6.0, 120°C for 3min, [TA506878])