

## Product datasheet for **TA506877S**

### **SERPINB3 Mouse Monoclonal Antibody [Clone ID: OTI1C10]**

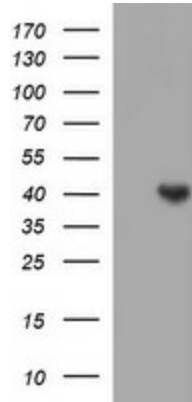
#### **Product data:**

<b>Product Type:</b>	Primary Antibodies
<b>Clone Name:</b>	OTI1C10
<b>Applications:</b>	IHC, WB
<b>Recommended Dilution:</b>	WB 1:4000, IHC 1:150
<b>Reactivity:</b>	Human
<b>Host:</b>	Mouse
<b>Isotype:</b>	IgG2a
<b>Clonality:</b>	Monoclonal
<b>Immunogen:</b>	Full length human recombinant protein of human SERPINB3(NP_008850) produced in HEK293T cell.
<b>Formulation:</b>	PBS (pH 7.3) containing 1% BSA, 50% glycerol and 0.02% sodium azide.
<b>Concentration:</b>	1 mg/ml
<b>Purification:</b>	Purified from mouse ascites fluids or tissue culture supernatant by affinity chromatography (protein A/G)
<b>Conjugation:</b>	Unconjugated
<b>Storage:</b>	Store at -20°C as received.
<b>Stability:</b>	Stable for 12 months from date of receipt.
<b>Predicted Protein Size:</b>	44.4 kDa
<b>Gene Name:</b>	serpin family B member 3
<b>Database Link:</b>	<a href="#">NP_008850</a> <a href="#">Entrez Gene 6317 Human P29508</a>
<b>Synonyms:</b>	HsT1196; SCC; SCCA-1; SCCA-PD; SCCA1; SSCA1; T4-A
<b>Protein Families:</b>	Druggable Genome, Secreted Protein

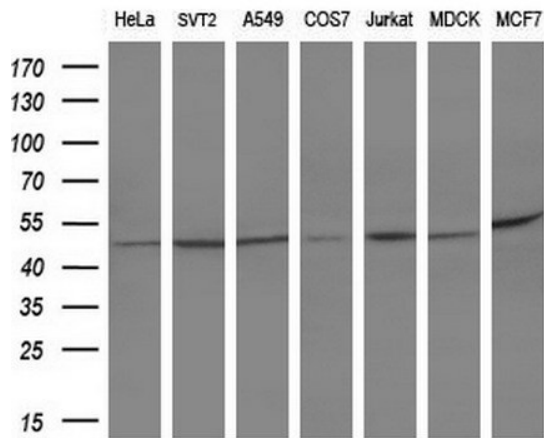


[View online »](#)

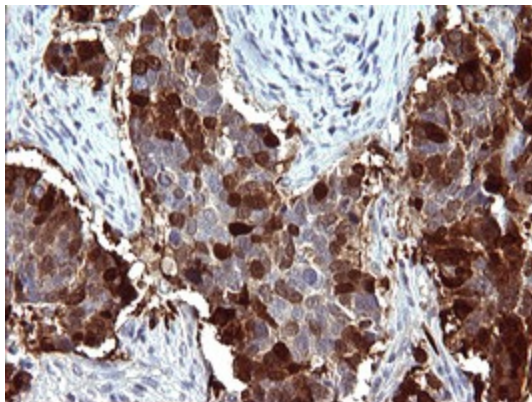
**Product images:**



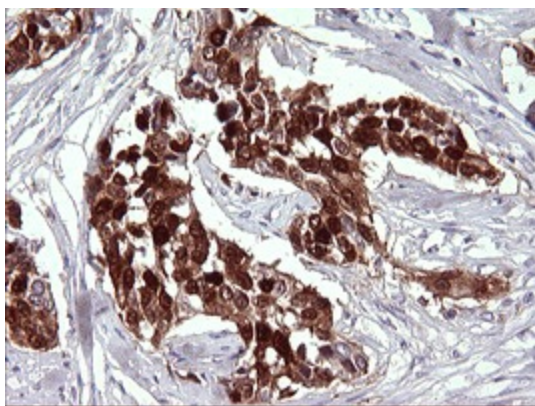
HEK293T cells were transfected with the pCMV6-ENTRY control (Left lane) or pCMV6-ENTRY SERPINB3 ([RC202683], Right lane) cDNA for 48 hrs and lysed. Equivalent amounts of cell lysates (5 ug per lane) were separated by SDS-PAGE and immunoblotted with anti-SERPINB3. Positive lysates [LY416321] (100ug) and [LC416321] (20ug) can be purchased separately from OriGene.



Western blot analysis of extracts (10ug) from 7 different cell lines by using anti-SERPINB3 monoclonal antibody (1:200).



Immunohistochemical staining of paraffin-embedded Carcinoma of Human lung tissue using anti-SERPINB3 mouse monoclonal antibody. (Heat-induced epitope retrieval by 10mM citric buffer, pH6.0, 120°C for 3min, [TA506877])



Immunohistochemical staining of paraffin-embedded Carcinoma of Human bladder tissue using anti-SERPINB3 mouse monoclonal antibody. (Heat-induced epitope retrieval by 10mM citric buffer, pH6.0, 120°C for 3min, [TA506877])