

Product datasheet for **TA506873**

Methylmalonyl Coenzyme A mutase (MUT) Mouse Monoclonal Antibody [Clone ID: OTI2C8]

Product data:

Product Type:	Primary Antibodies
Clone Name:	OTI2C8
Applications:	IF, WB
Recommended Dilution:	WB 1:4000, IF 1:100
Reactivity:	Human, Mouse, Rat
Host:	Mouse
Isotype:	IgG2a
Clonality:	Monoclonal
Immunogen:	Full length human recombinant protein of human MUT(NP_000246) produced in HEK293T cell.
Formulation:	PBS (pH 7.3) containing 1% BSA, 50% glycerol and 0.02% sodium azide.
Concentration:	1 mg/ml
Purification:	Purified from mouse ascites fluids or tissue culture supernatant by affinity chromatography (protein A/G)
Conjugation:	Unconjugated
Storage:	Store at -20°C as received.
Stability:	Stable for 12 months from date of receipt.
Predicted Protein Size:	79.3 kDa
Gene Name:	methylmalonyl-CoA mutase
Database Link:	NP_000246 Entrez Gene 17850 Mouse Entrez Gene 688517 Rat Entrez Gene 4594 Human P22033
Background:	This gene encodes the mitochondrial enzyme methylmalonyl Coenzyme A mutase. In humans, the product of this gene is a vitamin B12-dependent enzyme which catalyzes the isomerization of methylmalonyl-CoA to succinyl-CoA, while in other species this enzyme may have different functions. Mutations in this gene may lead to various types of methylmalonic aciduria. [provided by RefSeq, Jul 2008]



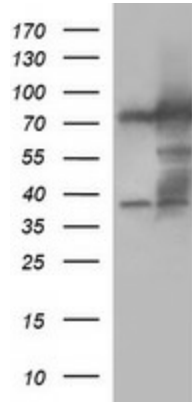
[View online »](#)

Synonyms: MCM

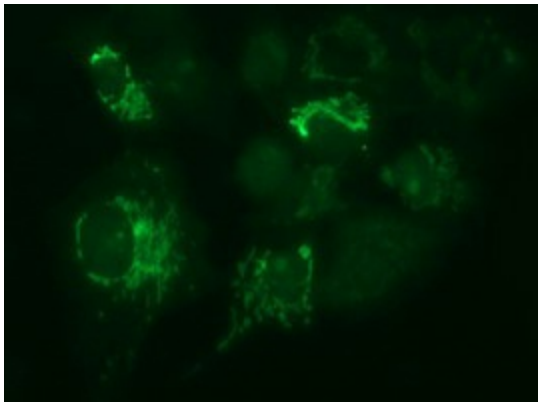
Protein Families: Druggable Genome

Protein Pathways: Metabolic pathways, Propanoate metabolism, Valine, leucine and isoleucine degradation

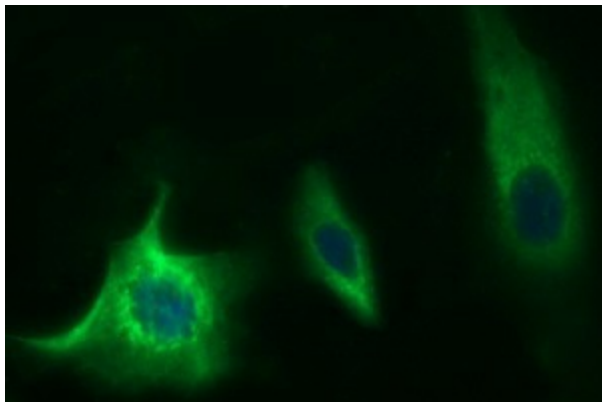
Product images:



HEK293T cells were transfected with the pCMV6-ENTRY control (Cat# [PS100001], Left lane) or pCMV6-ENTRY MUT (Cat# [RC201972], Right lane) cDNA for 48 hrs and lysed. Equivalent amounts of cell lysates (5 ug per lane) were separated by SDS-PAGE and immunoblotted with anti-MUT (Cat# TA506873). Positive lysates [LY400099] (100ug) and [LC400099] (20ug) can be purchased separately from OriGene.



Anti-MUT mouse monoclonal antibody (TA506873) immunofluorescent staining of COS7 cells transiently transfected by pCMV6-ENTRY MUT ([RC201972]).



Immunofluorescent staining of HeLa cells using anti-MUT mouse monoclonal antibody (TA506873) at 1:100 dilution.