

Product datasheet for **TA506864M**

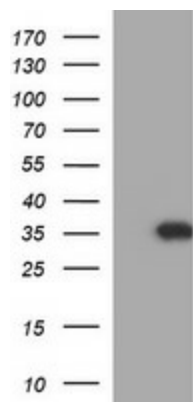
POLR3GL Mouse Monoclonal Antibody [Clone ID: OTI5F10]

Product data:

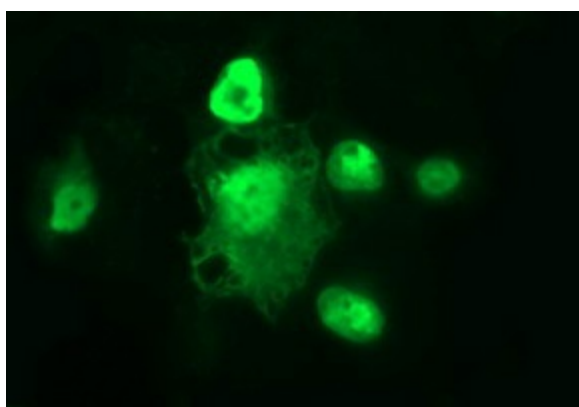
Product Type:	Primary Antibodies
Clone Name:	OTI5F10
Applications:	IF, WB
Recommended Dilution:	WB 1:4000, IF 1:100
Reactivity:	Human, Mouse, Rat
Host:	Mouse
Isotype:	IgG1
Clonality:	Monoclonal
Immunogen:	Full length human recombinant protein of human POLR3GL(NP_115681) produced in HEK293T cell.
Formulation:	PBS (pH 7.3) containing 1% BSA, 50% glycerol and 0.02% sodium azide.
Concentration:	1 mg/ml
Purification:	Purified from mouse ascites fluids or tissue culture supernatant by affinity chromatography (protein A/G)
Conjugation:	Unconjugated
Storage:	Store at -20°C as received.
Stability:	Stable for 12 months from date of receipt.
Predicted Protein Size:	25.2 kDa
Gene Name:	RNA polymerase III subunit GL
Database Link:	NP_115681 Entrez Gene 84265 Human Q9BT43
Synonyms:	flj32422; RPC32HOM
Protein Pathways:	Cytosolic DNA-sensing pathway, Metabolic pathways, Purine metabolism, Pyrimidine metabolism, RNA polymerase

[View online »](#)

Product images:



HEK293T cells were transfected with the pCMV6-ENTRY control (Left lane) or pCMV6-ENTRY POLR3GL ([RC200991], Right lane) cDNA for 48 hrs and lysed. Equivalent amounts of cell lysates (5 ug per lane) were separated by SDS-PAGE and immunoblotted with anti-POLR3GL. Positive lysates [LY410247] (100ug) and [LC410247] (20ug) can be purchased separately from OriGene.



Anti-POLR3GL mouse monoclonal antibody ([TA506864]) immunofluorescent staining of COS7 cells transiently transfected by pCMV6-ENTRY POLR3GL ([RC200991]).