

Product datasheet for **TA506860BM**

Phospholipase A2 (PLB1) Mouse Monoclonal Antibody (HRP conjugated) [Clone ID: OTI1D3]

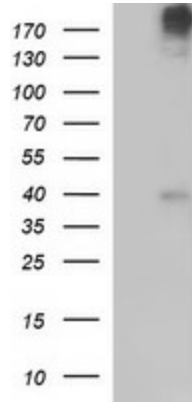
Product data:

Product Type:	Primary Antibodies
Clone Name:	OTI1D3
Applications:	WB
Recommended Dilution:	WB 1:4000
Reactivity:	Human
Host:	Mouse
Isotype:	IgG1
Clonality:	Monoclonal
Immunogen:	Full length human recombinant protein of human PLB1(NP_694566) produced in HEK293T cell.
Formulation:	PBS (pH 7.3) containing 1% BSA, 50% glycerol.
Concentration:	0.5 mg/ml
Purification:	Purified from mouse ascites fluids or tissue culture supernatant by affinity chromatography (protein A/G)
Conjugation:	HRP
Storage:	Store at -20°C as received.
Stability:	Stable for 12 months from date of receipt.
Predicted Protein Size:	162.9 kDa
Gene Name:	phospholipase B1
Database Link:	NP_694566 Entrez Gene 151056 Human Q6P1J6
Synonyms:	PLB; PLB/LIP
Protein Families:	Transmembrane

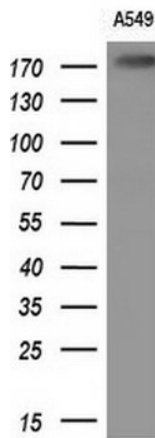


[View online »](#)

Product images:



HEK293T cells were transfected with the pCMV6-ENTRY control (Cat# [PS100001], Left lane) or pCMV6-ENTRY PLB1 (Cat# [RC218730], Right lane) cDNA for 48 hrs and lysed. Equivalent amounts of cell lysates (5 ug per lane) were separated by SDS-PAGE and immunoblotted with anti-PLB1 (Cat# [TA506860]). Positive lysates [LY407199] (100ug) and [LC407199] (20ug) can be purchased separately from OriGene.



Western blot analysis of extracts (10ug) from 1 cell lines by using anti-PLB1 monoclonal antibody (1:200).