

## Product datasheet for **TA506854BM**

### GRF2 (RAPGEF1) Mouse Monoclonal Antibody (HRP conjugated) [Clone ID: OTI3H5]

#### Product data:

Product Type:	Primary Antibodies
Clone Name:	OTI3H5
Applications:	IF, WB
Recommended Dilution:	WB 1:400~4000, IF 1:100
Reactivity:	Human, Monkey, Mouse, Rat
Host:	Mouse
Isotype:	IgG2b
Clonality:	Monoclonal
Immunogen:	Full length human recombinant protein of human RAPGEF1(NP_941372) produced in HEK293T cell.
Formulation:	PBS (pH 7.3) containing 1% BSA, 50% glycerol.
Concentration:	0.5 mg/ml
Purification:	Purified from mouse ascites fluids or tissue culture supernatant by affinity chromatography (protein A/G)
Conjugation:	HRP
Storage:	Store at -20°C as received.
Stability:	Stable for 12 months from date of receipt.
Predicted Protein Size:	122.6 kDa
Gene Name:	Rap guanine nucleotide exchange factor 1
Database Link:	<a href="#">NP_941372</a> <a href="#">Entrez Gene 107746 MouseEntrez Gene 63881 RatEntrez Gene 715272 MonkeyEntrez Gene 2889 Human</a> <a href="#">Q13905</a>



[View online »](#)

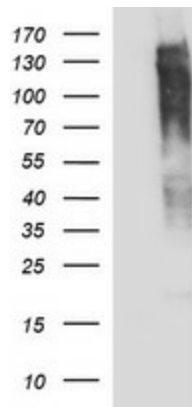
**Background:** This gene encodes a human guanine nucleotide exchange factor. It transduces signals from CRK by binding the SH3 domain of CRK, and activating several members of the Ras family of GTPases. This signaling cascade that may be involved in apoptosis, integrin-mediated signal transduction, and cell transformation. Several alternatively spliced transcript variants of this gene have been described, but the full-length nature of some variants has not been determined. [provided by RefSeq, Jul 2008]

**Synonyms:** C3G; GRF2

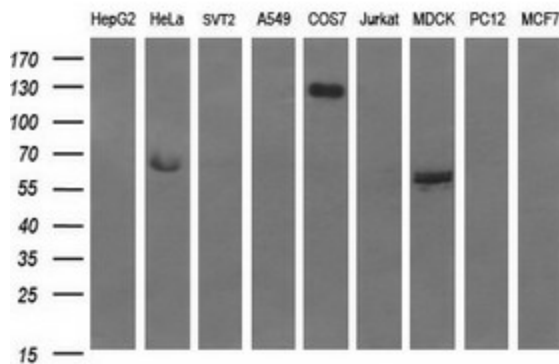
**Protein Families:** Druggable Genome

**Protein Pathways:** Focal adhesion, Insulin signaling pathway, Neurotrophin signaling pathway, Renal cell carcinoma

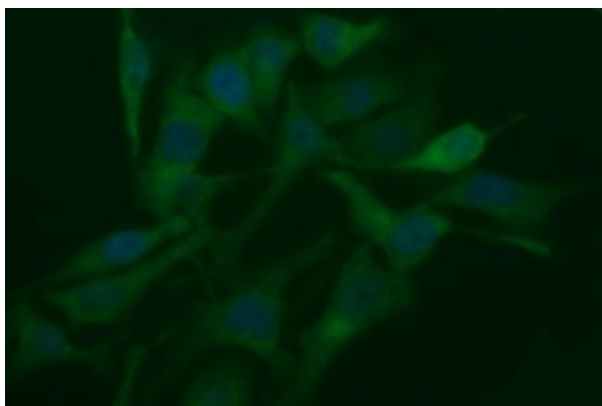
**Product images:**



HEK293T cells were transfected with the pCMV6-ENTRY control (Left lane) or pCMV6-ENTRY RAPGEF1 ([RC208092], Right lane) cDNA for 48 hrs and lysed. Equivalent amounts of cell lysates (5 ug per lane) were separated by SDS-PAGE and immunoblotted with anti-RAPGEF1. Positive lysates [LY404802] (100ug) and [LC404802] (20ug) can be purchased separately from OriGene.



Western blot analysis of extracts (35ug) from 9 different cell lines by using anti-RAPGEF1 monoclonal antibody (HepG2: human; HeLa: human; SVT2: mouse; A549: human; COS7: monkey; Jurkat: human; MDCK: canine; PC12: rat; MCF7: human).



Immunofluorescent staining of HeLa cells using anti-RAPGEF1 mouse monoclonal antibody ([TA506854]).