

Product datasheet for **TA506851**

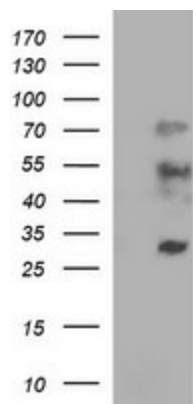
IL1 alpha (IL1A) Mouse Monoclonal Antibody [Clone ID: OTI2B4]

Product data:

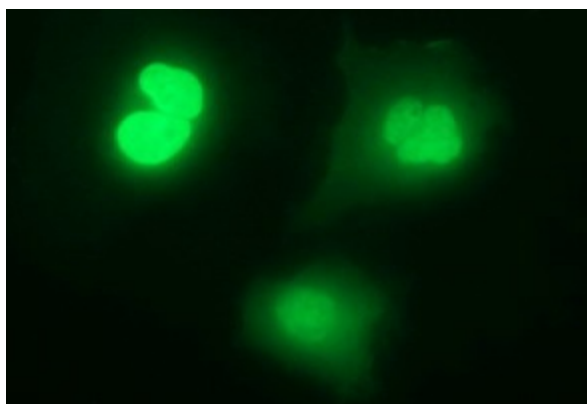
Product Type:	Primary Antibodies
Clone Name:	OTI2B4
Applications:	IF, WB
Recommended Dilution:	WB 1:1000 -1:4000, IF 1:100
Reactivity:	Human
Host:	Mouse
Isotype:	IgG1
Clonality:	Monoclonal
Immunogen:	Full length human recombinant protein of human IL1A(NP_000566) produced in HEK293T cell.
Formulation:	PBS (pH 7.3) containing 1% BSA, 50% glycerol and 0.02% sodium azide.
Concentration:	1 mg/ml
Purification:	Purified from mouse ascites fluids or tissue culture supernatant by affinity chromatography (protein A/G)
Conjugation:	Unconjugated
Storage:	Store at -20°C as received.
Stability:	Stable for 12 months from date of receipt.
Predicted Protein Size:	30.4 kDa
Gene Name:	interleukin 1 alpha
Database Link:	NP_000566 Entrez Gene 3552 Human P01583
Synonyms:	IL-1A; IL1; IL1-ALPHA; IL1F1
Protein Families:	Druggable Genome, Secreted Protein
Protein Pathways:	Apoptosis, Cytokine-cytokine receptor interaction, Graft-versus-host disease, Hematopoietic cell lineage, MAPK signaling pathway, Prion diseases, Type I diabetes mellitus



[View online »](#)

Product images:

HEK293T cells lysate (5 ug, left lane) and full length human recombinant protein of human IL1A (NP_000566) produced in HEK293T cell (5 ug, right lane) were separated by SDS-PAGE and immunoblotted with anti-IL1A.



Immunofluorescent staining of COS7 cells transiently transfected by pCMV6-ENTRY IL1A ([RC202084]) using Anti-IL1A mouse monoclonal antibody (TA506851) at 1:100 dilution.