

Product datasheet for **TA506848S**

IL1 alpha (IL1A) Mouse Monoclonal Antibody [Clone ID: OTI2E7]

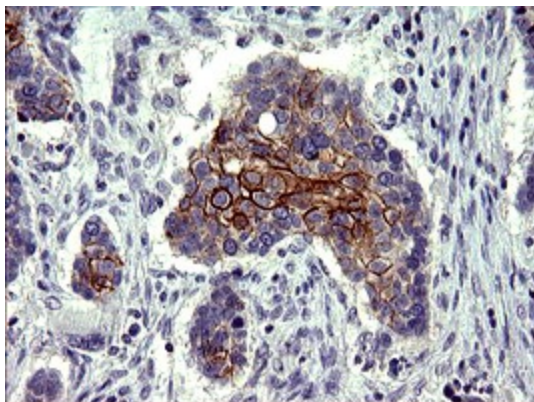
Product data:

Product Type:	Primary Antibodies
Clone Name:	OTI2E7
Applications:	IF, IHC
Recommended Dilution:	IF 1:100, IHC 1:150
Reactivity:	Human
Host:	Mouse
Isotype:	IgG1
Clonality:	Monoclonal
Immunogen:	Full length human recombinant protein of human IL1A(NP_000566) produced in HEK293T cell.
Formulation:	PBS (pH 7.3) containing 1% BSA, 50% glycerol and 0.02% sodium azide.
Concentration:	1 mg/ml
Purification:	Purified from mouse ascites fluids or tissue culture supernatant by affinity chromatography (protein A/G)
Conjugation:	Unconjugated
Storage:	Store at -20°C as received.
Stability:	Stable for 12 months from date of receipt.
Predicted Protein Size:	30.4 kDa
Gene Name:	interleukin 1 alpha
Database Link:	NP_000566 Entrez Gene 3552 Human P01583

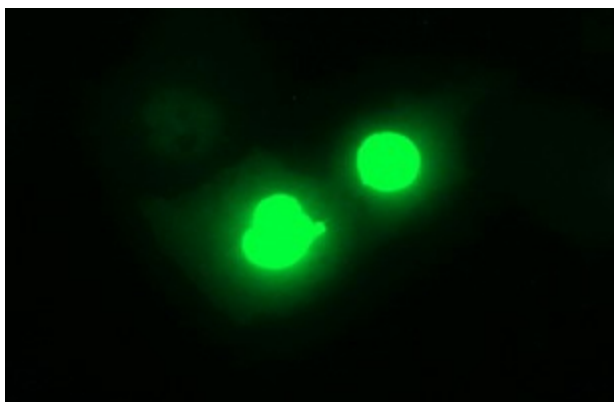


[View online »](#)

Background:	The protein encoded by this gene is a member of the interleukin 1 cytokine family. This cytokine is a pleiotropic cytokine involved in various immune responses, inflammatory processes, and hematopoiesis. This cytokine is produced by monocytes and macrophages as a proprotein, which is proteolytically processed and released in response to cell injury, and thus induces apoptosis. This gene and eight other interleukin 1 family genes form a cytokine gene cluster on chromosome 2. It has been suggested that the polymorphism of these genes is associated with rheumatoid arthritis and Alzheimer's disease. [provided by RefSeq, Jul 2008]
Synonyms:	IL-1A; IL1; IL1-ALPHA; IL1F1
Protein Families:	Druggable Genome, Secreted Protein
Protein Pathways:	Apoptosis, Cytokine-cytokine receptor interaction, Graft-versus-host disease, Hematopoietic cell lineage, MAPK signaling pathway, Prion diseases, Type I diabetes mellitus

Product images:

Immunohistochemical staining of paraffin-embedded Carcinoma of Human lung tissue using anti-IL1A mouse monoclonal antibody ([TA506848]) at 1:150 dilution.



Anti-IL1A mouse monoclonal antibody ([TA506848]) immunofluorescent staining of COS7 cells transiently transfected by pCMV6-ENTRY IL1A ([RC202084]).