

Product datasheet for **TA506841S**

p60 CAF1 (CHAF1B) Mouse Monoclonal Antibody [Clone ID: OTI2D5]

Product data:

Product Type:	Primary Antibodies
Clone Name:	OTI2D5
Applications:	IF, WB
Recommended Dilution:	WB 1:4000, IF 1:100
Reactivity:	Human
Host:	Mouse
Isotype:	IgG1
Clonality:	Monoclonal
Immunogen:	Full length human recombinant protein of human CHAF1B(NP_005432) produced in HEK293T cell.
Formulation:	PBS (pH 7.3) containing 1% BSA, 50% glycerol and 0.02% sodium azide.
Concentration:	1 mg/ml
Purification:	Purified from mouse ascites fluids or tissue culture supernatant by affinity chromatography (protein A/G)
Conjugation:	Unconjugated
Storage:	Store at -20°C as received.
Stability:	Stable for 12 months from date of receipt.
Predicted Protein Size:	61.3 kDa
Gene Name:	chromatin assembly factor 1 subunit B
Database Link:	NP_005432 Entrez Gene 8208 Human Q13112



[View online »](#)

Background:

Chromatin assembly factor I (CAF-I) is required for the assembly of histone octamers onto newly-replicated DNA. CAF-I is composed of three protein subunits, p50, p60, and p150. The protein encoded by this gene corresponds to the p60 subunit and is required for chromatin assembly after replication. The encoded protein is differentially phosphorylated in a cell cycle-dependent manner. In addition, it is normally found in the nucleus except during mitosis, when it is released into the cytoplasm. This protein is a member of the WD-repeat HIR1 family and may also be involved in DNA repair. [provided by RefSeq, Jul 2008]

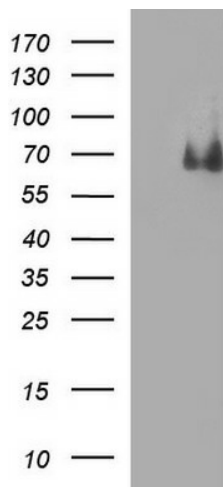
Synonyms:

CAF-1; CAF-IP60; CAF1; CAF1A; CAF1P60; MPHOSPH7; MPP7

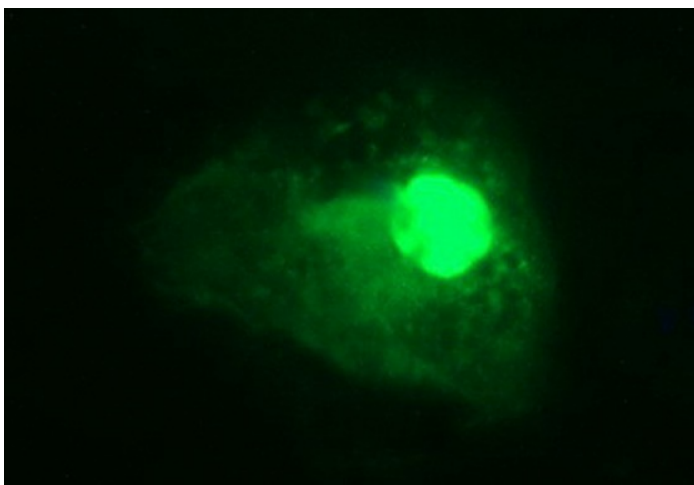
Protein Families:

Druggable Genome, Transcription Factors

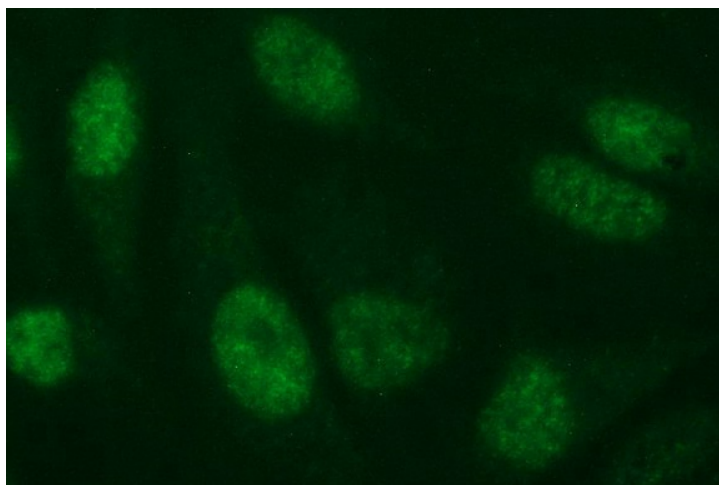
Product images:



HEK293T cells were transfected with the pCMV6-ENTRY control (Left lane) or pCMV6-ENTRY CHAF1B ([RC202858], Right lane) cDNA for 48 hrs and lysed. Equivalent amounts of cell lysates (5 ug per lane) were separated by SDS-PAGE and immunoblotted with anti-CHAF1B. Positive lysates [LY401669] (100ug) and [LC401669] (20ug) can be purchased separately from OriGene.



Anti-CHAF1B mouse monoclonal antibody ([TA506841]) immunofluorescent staining of COS7 cells transiently transfected by pCMV6-ENTRY CHAF1B ([RC202858]).



Immunofluorescent staining of HeLa cells using anti-CHAF1B mouse monoclonal antibody ([TA506841]).