

Product datasheet for **TA506839BM**

GRF2 (RAPGEF1) Mouse Monoclonal Antibody (HRP conjugated) [Clone ID: OTI2B5]

Product data:

Product Type:	Primary Antibodies
Clone Name:	OTI2B5
Applications:	IHC, WB
Recommended Dilution:	WB 1:4000, IHC: 1:150
Reactivity:	Human, Mouse, Rat
Host:	Mouse
Isotype:	IgG1
Clonality:	Monoclonal
Immunogen:	Full length human recombinant protein of human RAPGEF1(NP_941372) produced in HEK293T cell.
Formulation:	PBS (pH 7.3) containing 1% BSA, 50% glycerol.
Concentration:	0.5 mg/ml
Purification:	Purified from mouse ascites fluids or tissue culture supernatant by affinity chromatography (protein A/G)
Conjugation:	HRP
Storage:	Store at -20°C as received.
Stability:	Stable for 12 months from date of receipt.
Predicted Protein Size:	122.6 kDa
Gene Name:	Rap guanine nucleotide exchange factor 1
Database Link:	NP_941372 Entrez Gene 107746 Mouse Entrez Gene 63881 Rat Entrez Gene 2889 Human Q13905
Background:	This gene encodes a human guanine nucleotide exchange factor. It transduces signals from CRK by binding the SH3 domain of CRK, and activating several members of the Ras family of GTPases. This signaling cascade that may be involved in apoptosis, integrin-mediated signal transduction, and cell transformation. Several alternatively spliced transcript variants of this gene have been described, but the full-length nature of some variants has not been determined. [provided by RefSeq, Jul 2008]



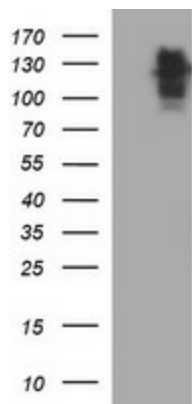
[View online »](#)

Synonyms: C3G; GRF2

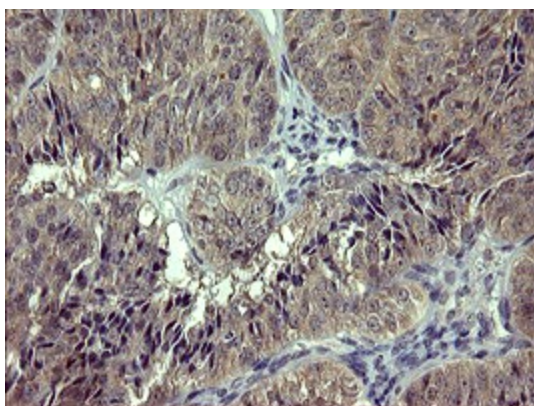
Protein Families: Druggable Genome

Protein Pathways: Focal adhesion, Insulin signaling pathway, Neurotrophin signaling pathway, Renal cell carcinoma

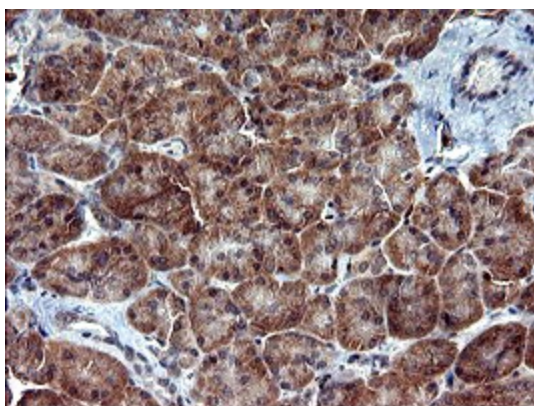
Product images:



HEK293T cells were transfected with the pCMV6-ENTRY control (Left lane) or pCMV6-ENTRY RAPGEF1 ([RC208092], Right lane) cDNA for 48 hrs and lysed. Equivalent amounts of cell lysates (5 ug per lane) were separated by SDS-PAGE and immunoblotted with anti-RAPGEF1. Positive lysates [LY404802] (100ug) and [LC404802] (20ug) can be purchased separately from OriGene.



Immunohistochemical staining of paraffin-embedded Adenocarcinoma of Human ovary tissue using anti-RAPGEF1 mouse monoclonal antibody. ([TA506839])



Immunohistochemical staining of paraffin-embedded Human pancreas tissue within the normal limits using anti-RAPGEF1 mouse monoclonal antibody. ([TA506839])