

Product datasheet for **TA506830**

SIVA (SIVA1) Mouse Monoclonal Antibody [Clone ID: OTI2F8]

Product data:

Product Type:	Primary Antibodies
Clone Name:	OTI2F8
Applications:	IF, IHC, WB
Recommended Dilution:	WB 1:1000, IF: 1:100
Reactivity:	Human
Host:	Mouse
Isotype:	IgG2a
Clonality:	Monoclonal
Immunogen:	Full length human recombinant protein of human SIVA1(NP_006418) produced in HEK293T cell.
Formulation:	PBS (pH 7.3) containing 1% BSA, 50% glycerol and 0.02% sodium azide.
Concentration:	1 mg/ml
Purification:	Purified from mouse ascites fluids or tissue culture supernatant by affinity chromatography (protein A/G)
Conjugation:	Unconjugated
Storage:	Store at -20°C as received.
Stability:	Stable for 12 months from date of receipt.
Predicted Protein Size:	18.5 kDa
Gene Name:	SIVA1 apoptosis inducing factor
Database Link:	NP_006418 Entrez Gene 10572 Human O15304
Background:	This gene encodes a protein with an important role in the apoptotic (programmed cell death) pathway induced by the CD27 antigen, a member of the tumor necrosis factor receptor (TNFR) superfamily. The CD27 antigen cytoplasmic tail binds to the N-terminus of this protein. Two alternatively spliced transcript variants encoding distinct proteins have been described. [provided by RefSeq, Jul 2008]



[View online »](#)

Synonyms: CD27BP; SIVA; Siva-1; Siva-2

Protein Families: Druggable Genome

Product images:

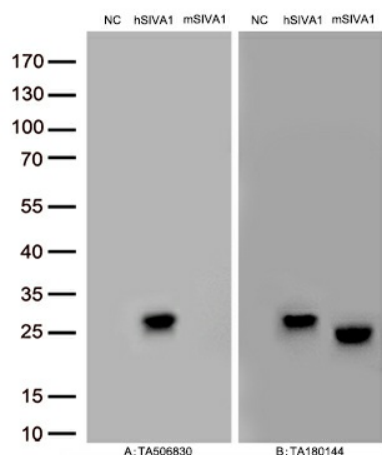
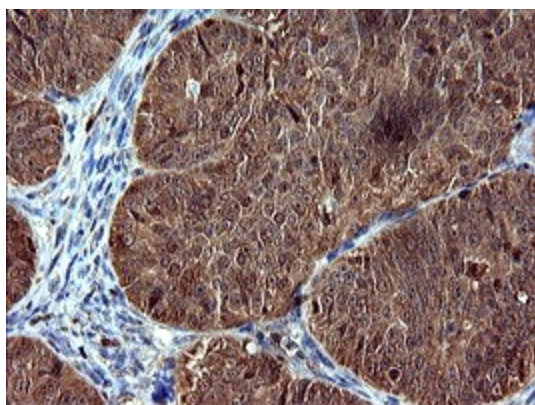
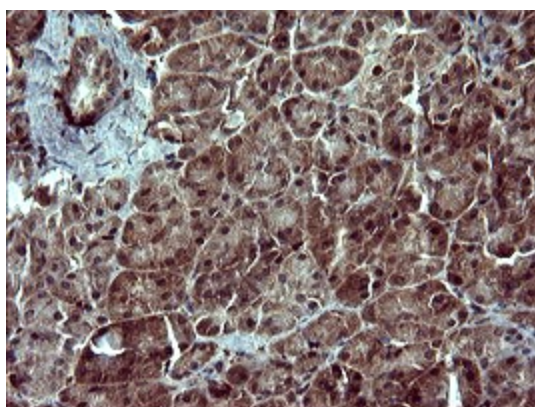


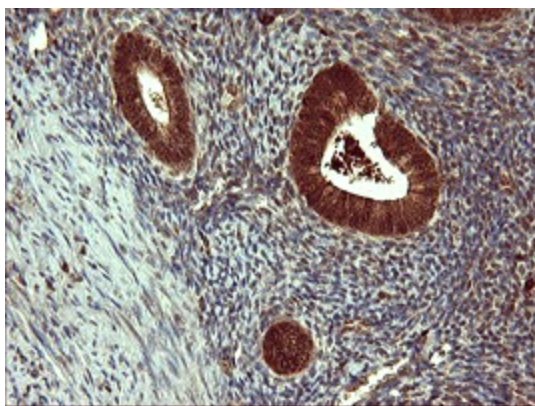
Figure A, Western blot analysis of overexpressed lysates(15ug per lane) from HEK293T cells transfected with empty plasmid ([PS100001], NC) , human SIVA1 plasmid ([RC215680], hSIVA1), mouse SIVA1 plasmid ([MR201528], mSIVA1) using anti-SIVA1 antibody TA506830 (1:500). Figure B, Western blot analysis of the same samples as figure A with anti-DDK antibody ([TA180144], 1:1000)



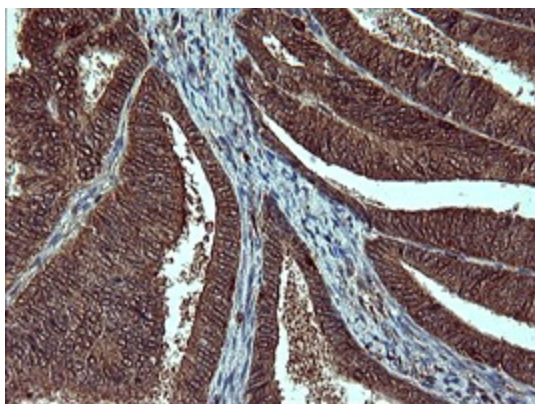
Immunohistochemical staining of paraffin-embedded Adenocarcinoma of Human ovary tissue using anti-SIVA1 mouse monoclonal antibody. (TA506830)



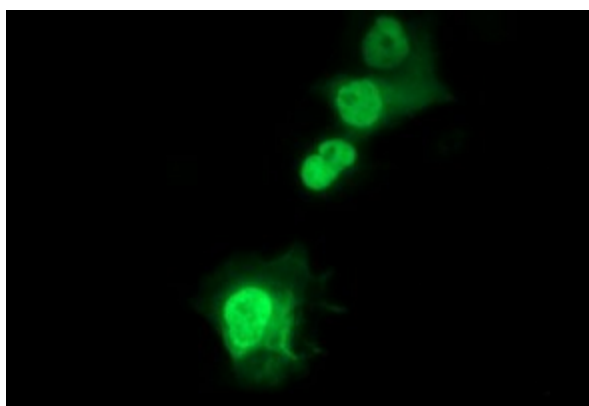
Immunohistochemical staining of paraffin-embedded Human pancreas tissue within the normal limits using anti-SIVA1 mouse monoclonal antibody. (TA506830)



Immunohistochemical staining of paraffin-embedded Human endometrium tissue within the normal limits using anti-SIVA1 mouse monoclonal antibody. (TA506830)



Immunohistochemical staining of paraffin-embedded Adenocarcinoma of Human endometrium tissue using anti-SIVA1 mouse monoclonal antibody. (TA506830)



Anti-SIVA1 mouse monoclonal antibody (TA506830) immunofluorescent staining of COS7 cells transiently transfected by pCMV6-ENTRY SIVA1 ([RC215680]).