

## Product datasheet for **TA506824M**

### SIVA (SIVA1) Mouse Monoclonal Antibody [Clone ID: OTI2E4]

#### Product data:

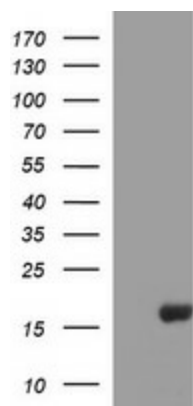
Product Type:	Primary Antibodies
Clone Name:	OTI2E4
Applications:	IF, IHC, WB
Recommended Dilution:	WB 1:2000, IF: 1:100
Reactivity:	Human
Host:	Mouse
Isotype:	IgG1
Clonality:	Monoclonal
Immunogen:	Full length human recombinant protein of human SIVA1(NP_006418) produced in HEK293T cell.
Formulation:	PBS (pH 7.3) containing 1% BSA, 50% glycerol and 0.02% sodium azide.
Concentration:	1 mg/ml
Purification:	Purified from mouse ascites fluids or tissue culture supernatant by affinity chromatography (protein A/G)
Conjugation:	Unconjugated
Storage:	Store at -20°C as received.
Stability:	Stable for 12 months from date of receipt.
Predicted Protein Size:	18.5 kDa
Gene Name:	SIVA1 apoptosis inducing factor
Database Link:	<a href="#">NP_006418</a> <a href="#">Entrez Gene 10572 Human</a> <a href="#">O15304</a>
Background:	This gene encodes a protein with an important role in the apoptotic (programmed cell death) pathway induced by the CD27 antigen, a member of the tumor necrosis factor receptor (TNFR) superfamily. The CD27 antigen cytoplasmic tail binds to the N-terminus of this protein. Two alternatively spliced transcript variants encoding distinct proteins have been described. [provided by RefSeq, Jul 2008]


[View online »](#)

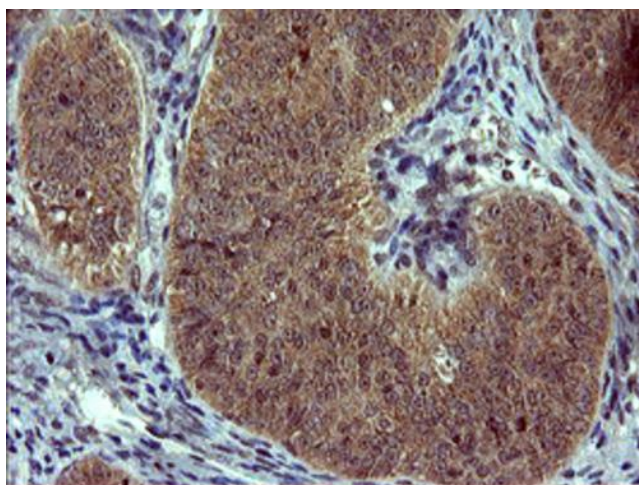
**Synonyms:** CD27BP; SIVA; Siva-1; Siva-2

**Protein Families:** Druggable Genome

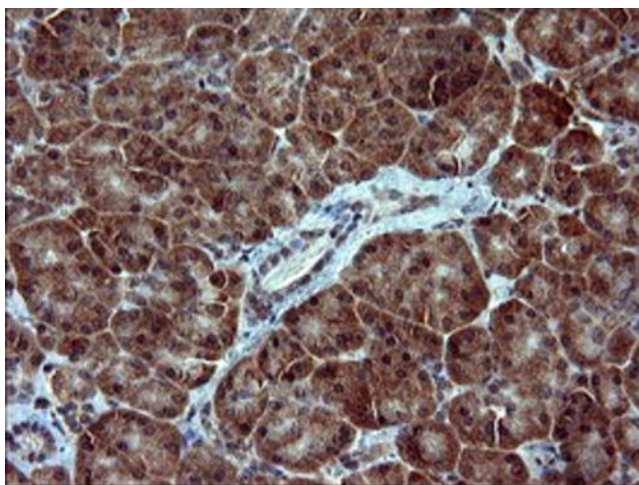
**Product images:**



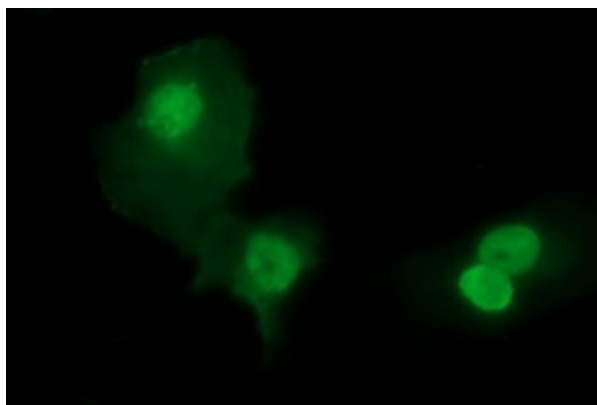
HEK293T cells were transfected with the pCMV6-ENTRY control (Left lane) or pCMV6-ENTRY SIVA1 ([RC215680], Right lane) cDNA for 48 hrs and lysed. Equivalent amounts of cell lysates (5 ug per lane) were separated by SDS-PAGE and immunoblotted with anti-SIVA1. Positive lysates [LY416652] (100ug) and [LC416652] (20ug) can be purchased separately from OriGene.



Immunohistochemical staining of paraffin-embedded Adenocarcinoma of Human ovary tissue using anti-SIVA1 mouse monoclonal antibody. ([TA506824]). Heat-induced epitope retrieval by EDTA solution buffer pH 8.0 at 120°C for 3 min.



Immunohistochemical staining of paraffin-embedded Human pancreas tissue within the normal limits using anti-SIVA1 mouse monoclonal antibody. ([TA506824]). Heat-induced epitope retrieval by EDTA solution buffer pH 8.0 at 120°C for 3 min.



Anti-SIVA1 mouse monoclonal antibody ([TA506824]) immunofluorescent staining of COS7 cells transiently transfected by pCMV6-ENTRY SIVA1 ([RC215680]).