

## Product datasheet for TA506821M

### GRF2 (RAPGEF1) Mouse Monoclonal Antibody [Clone ID: OTI1F2]

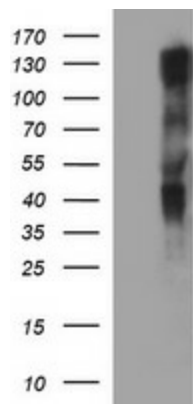
#### Product data:

|                         |   |
|-------------------------|---|
| Product Type:           | Primary Antibodies  |
| Clone Name:             | OTI1F2  |
| Applications:           | IF, WB  |
| Recommended Dilution:   | WB 1:6000, IF 1:100   |
| Reactivity:             | Human, Mouse, Rat   |
| Host:                   | Mouse   |
| Isotype:                | IgG1  |
| Clonality:              | Monoclonal  |
| Immunogen:              | Full length human recombinant protein of human RAPGEF1(NP_941372) produced in HEK293T cell.   |
| Formulation:            | PBS (pH 7.3) containing 1% BSA, 50% glycerol and 0.02% sodium azide.  |
| Concentration:          | 1 mg/ml   |
| Purification:           | Purified from mouse ascites fluids or tissue culture supernatant by affinity chromatography (protein A/G)   |
| Conjugation:            | Unconjugated  |
| Storage:                | Store at -20°C as received.   |
| Stability:              | Stable for 12 months from date of receipt.  |
| Predicted Protein Size: | 122.6 kDa   |
| Gene Name:              | Rap guanine nucleotide exchange factor 1  |
| Database Link:          | <a href="#">NP_941372</a><br><a href="#">Entrez Gene 107746 Mouse</a> <a href="#">Entrez Gene 63881 Rat</a> <a href="#">Entrez Gene 2889 Human</a><br><a href="#">Q13905</a>  |
| Background:             | This gene encodes a human guanine nucleotide exchange factor. It transduces signals from CRK by binding the SH3 domain of CRK, and activating several members of the Ras family of GTPases. This signaling cascade that may be involved in apoptosis, integrin-mediated signal transduction, and cell transformation. Several alternatively spliced transcript variants of this gene have been described, but the full-length nature of some variants has not been determined. [provided by RefSeq, Jul 2008] |

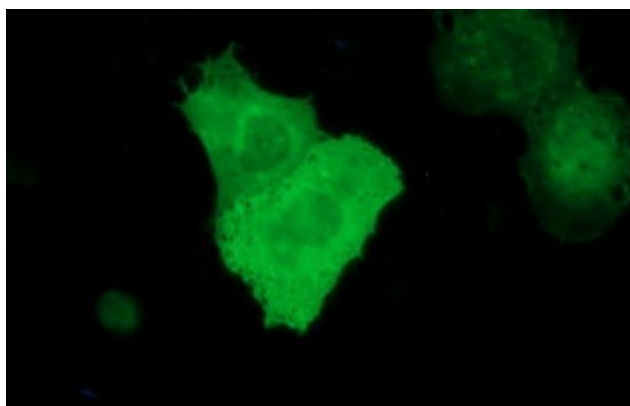

[View online »](#)

|                          |   |
|--------------------------|---|
| <b>Synonyms:</b>         | C3G; GRF2   |
| <b>Protein Families:</b> | Druggable Genome  |
| <b>Protein Pathways:</b> | Focal adhesion, Insulin signaling pathway, Neurotrophin signaling pathway, Renal cell carcinoma |

### Product images:



HEK293T cells were transfected with the pCMV6-ENTRY control (Left lane) or pCMV6-ENTRY RAPGEF1 ([RC208092], Right lane) cDNA for 48 hrs and lysed. Equivalent amounts of cell lysates (5 ug per lane) were separated by SDS-PAGE and immunoblotted with anti-RAPGEF1. Positive lysates [LY404802] (100ug) and [LC404802] (20ug) can be purchased separately from OriGene.



Anti-RAPGEF1 mouse monoclonal antibody ([TA506821]) immunofluorescent staining of COS7 cells transiently transfected by pCMV6-ENTRY RAPGEF1 ([RC208092]).