

## Product datasheet for **TA506817S**

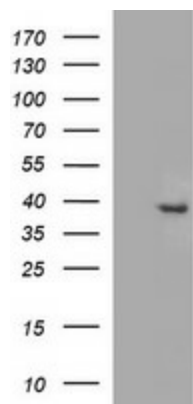
### FA2H Mouse Monoclonal Antibody [Clone ID: OTI2E3]

#### Product data:

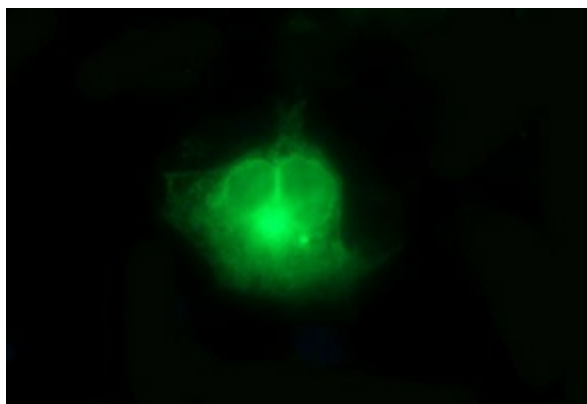
Product Type:	Primary Antibodies
Clone Name:	OTI2E3
Applications:	IF, WB
Recommended Dilution:	WB: 1:1000, IF: 1:50-1:100
Reactivity:	Human
Host:	Mouse
Isotype:	IgG1
Clonality:	Monoclonal
Immunogen:	Full length human recombinant protein of human FA2H(NP_077282) produced in HEK293T cell.
Formulation:	PBS (pH 7.3) containing 1% BSA, 50% glycerol and 0.02% sodium azide.
Concentration:	1 mg/ml
Purification:	Purified from mouse ascites fluids or tissue culture supernatant by affinity chromatography (protein A/G)
Conjugation:	Unconjugated
Storage:	Store at -20°C as received.
Stability:	Stable for 12 months from date of receipt.
Predicted Protein Size:	42.6 kDa
Gene Name:	fatty acid 2-hydroxylase
Database Link:	<a href="#">NP_077282</a> <a href="#">Entrez Gene 79152 Human</a> <a href="#">Q7L5A8</a>
Synonyms:	FAAH; FAH1; FAXDC1; SCS7; SPG35
Protein Families:	Transmembrane



[View online »](#)

**Product images:**

HEK293T cells were transfected with the pCMV6-ENTRY control (Left lane) or pCMV6-ENTRY FA2H ([RC202093], Right lane) cDNA for 48 hrs and lysed. Equivalent amounts of cell lysates (5 ug per lane) were separated by SDS-PAGE and immunoblotted with anti-FA2H. Positive lysates [LY411325] (100ug) and [LC411325] (20ug) can be purchased separately from OriGene.



Immunofluorescent staining of COS7 cells transiently transfected with pCMV6-ENTRY FA2H ([RC202093]) by using Anti-FA2H mouse monoclonal antibody ([TA506817]) at 1:100 dilutions.